



WASHINGTON

FAH MEMBER FACILITIES

SENATE

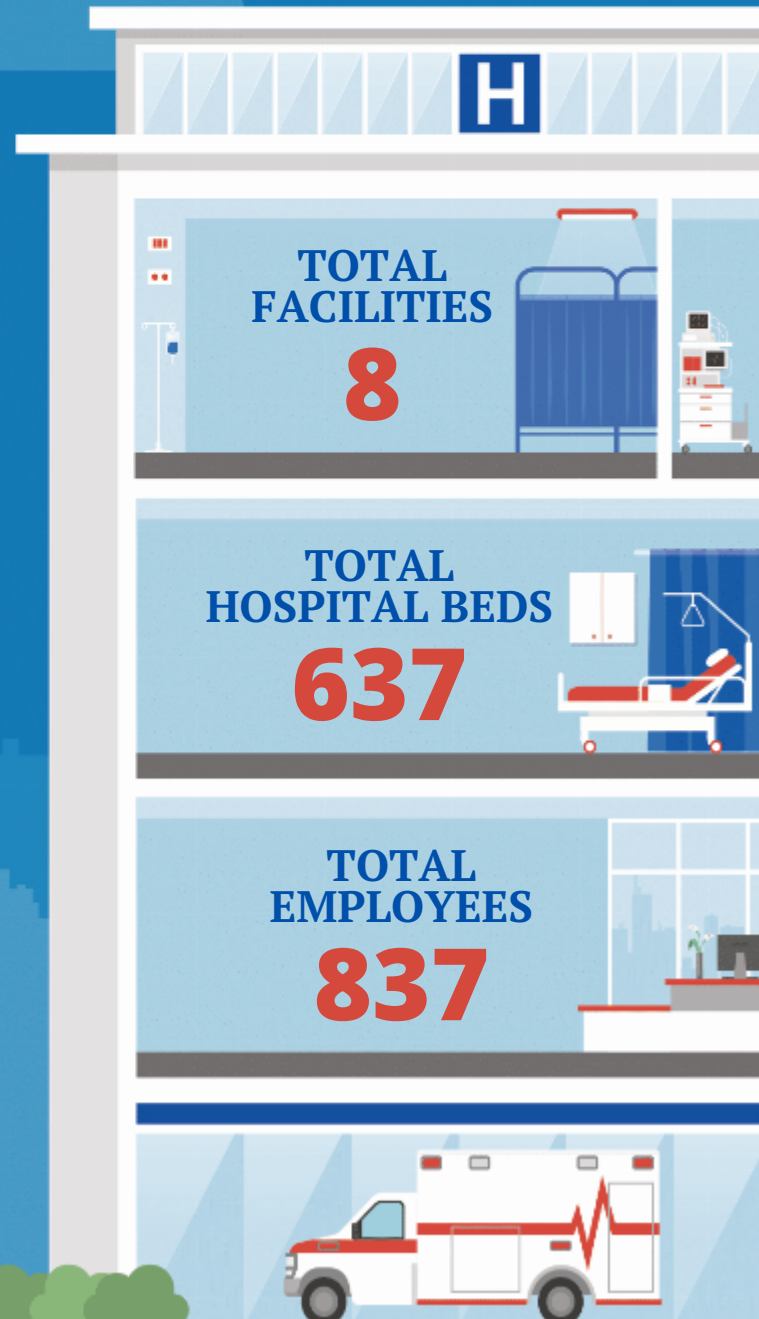
Sen. Patty Murray (D)
Sen. Maria Cantwell (D)

HOUSE *(Click name to view the district)*

Rep. Suzan DelBene (D) / Washington 1st
Rep. Rick Larsen (D) / Washington 2nd
Rep. Dan Newhouse (R) / Washington 4th
Rep. Cathy McMorris Rodgers (R) / Washington 5th
Rep. Derek Kilmer (D) / Washington 6th
Rep. Pramila Jayapal (D) / Washington 7th



Federation of American Hospitals represents America's tax-paying community hospitals and health systems.





			Beds	Employees
REP. SUZAN DELBENE (D) / WASHINGTON 1ST				
2 HOSPITALS				
Fairfax Hospital	Kirkland	Universal Health Services, Inc.	157	561
Fairfax Hospital - Monroe	Monroe	Universal Health Services, Inc.	34	
REP. RICK LARSEN (D) / WASHINGTON 2ND				
1 HOSPITALS				
Fairfax Hospital - Everett	Everett	Universal Health Services, Inc.	30	
REP. DAN NEWHOUSE (R) / WASHINGTON 4TH				
2 HOSPITALS				
Trios Health	Kennewick	Lifepoint Health	111	
Lourdes Health	Pasco	Lifepoint Health	95	
REP. CATHY MCMORRIS RODGERS (R) / WASHINGTON 5TH				
1 HOSPITALS				
Inland Northwest Behavioral Health	Spokane	Universal Health Services, Inc.	100	80
REP. DEREK KILMER (D) / WASHINGTON 6TH				
1 HOSPITALS				
CHI Franciscan Rehabilitation Hospital	Tacoma	ScionHealth	60	
REP. PRAMILA JAYAPAL (D) / WASHINGTON 7TH				
1 HOSPITALS				
Kindred Hospital Seattle First Hill	Seattle	ScionHealth	50	196

^
BACK
TO TOP