



TEXAS

FAH MEMBER FACILITIES

SENATE

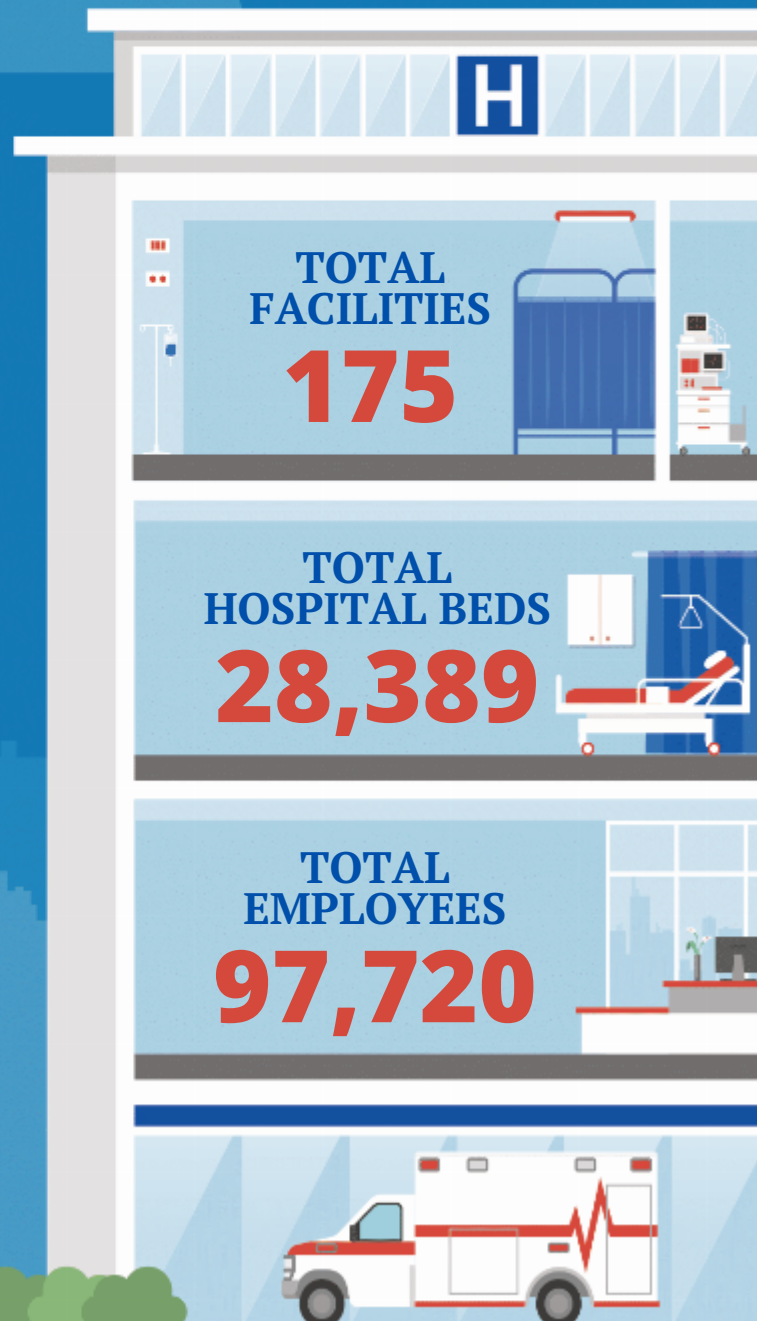
Sen. John Cornyn III (R)
Sen. Ted Cruz (R)

HOUSE *(Click name to view the district)*

- Rep. Nathaniel Moran (R) / Texas 1st
- Rep. Daniel Crenshaw (R) / Texas 2nd
- Rep. Keith Self (R) / Texas 3rd
- Rep. Pat Fallon (R) / Texas 4th
- Rep. Lance Gooden (R) / Texas 5th
- Rep. Jake Ellzey (R) / Texas 6th
- Rep. Lizzie Pannill Fletcher (D) / Texas 7th
- Rep. Morgan J. Luttrell (R) / Texas 8th
- Rep. Al Green (D) / Texas 9th
- Rep. Michael McCaul (R) / Texas 10th
- Rep. August Pfluger II (R) / Texas 11th
- Rep. Kay Granger (R) / Texas 12th
- Rep. Ronny Jackson (R) / Texas 13th
- Rep. Randy Weber (R) / Texas 14th
- Rep. Monica De La Cruz (R) / Texas 15th
- Rep. Veronica Escobar (D) / Texas 16th
- Rep. Pete Sessions (R) / Texas 17th
- Rep. Sheila Jackson Lee (D) / Texas 18th
- Rep. Jodey Arrington (R) / Texas 19th
- Rep. Joaquin Castro (D) / Texas 20th
- Rep. Chip Roy (R) / Texas 21st
- Rep. Troy Nehls (R) / Texas 22nd
- Rep. Tony Gonzales II (R) / Texas 23rd
- Rep. Beth Van Duyne (R) / Texas 24th
- Rep. Roger Williams (R) / Texas 25th
- Rep. Michael C. Burgess (R) / Texas 26th
- Rep. Michael Cloud (R) / Texas 27th
- Rep. Henry Cuellar (D) / Texas 28th
- Rep. Sylvia Garcia (D) / Texas 29th
- Rep. Jasmine Crockett (D) / Texas 30th
- Rep. John Carter (R) / Texas 31st
- Rep. Colin Allred (D) / Texas 32nd
- Rep. Marc Veasey (D) / Texas 33rd
- Rep. Vicente Gonzalez (D) / Texas 34th
- Rep. Gregorio Casar (D) / Texas 35th
- Rep. Brian Babin (R) / Texas 36th
- Rep. Lloyd Doggett II (D) / Texas 37th
- Rep. Wesley Hunt (R) / Texas 38th



Federation of American Hospitals represents America's tax-paying community hospitals and health systems.





			Beds	Employees
REP. NATHANIEL MORAN (R) / TEXAS 1ST				
10 HOSPITALS				
UT Health Henderson	Henderson	Ardent Health Services	96	173
UT Health East Texas	Tyler	Ardent Health Services	36	94
UT Health Tyler	Tyler	Ardent Health Services	502	2384
UT Health East Texas Rehabilitation Center	Tyler	Ardent Health Services	49	313
UT Health Pittsburg	Pittsburg	Ardent Health Services	25	188
UT Health North Campus Tyler	Tyler	Ardent Health Services	130	1487
UT Health Carthage	Carthage	Ardent Health Services	42	117
Longview Regional Medical Center	Longview	Community Health Systems	230	986
Christus Trinity Mother Frances Rehabilitation Hospital	Tyler	Encompass Health	74	230
Encompass Health Rehabilitation Hospital of Texarkana	Texarkana	Encompass Health	60	218

REP. DANIEL CRENSHAW (R) / TEXAS 2ND
4 HOSPITALS

Encompass Health Rehabilitation Hospital Vision Park	Conroe	Encompass Health	60	157
Encompass Health Rehabilitation Hospital of the Woodlands	Conroe	Encompass Health	84	196
Houston Healthcare Kingwood	Humble	HCA Healthcare	411	1500
Kingwood Pines Hospital	Humble	Universal Health Services, Inc.	116	252

REP. KEITH SELF (R) / TEXAS 3RD
3 HOSPITALS

Medical City Plano	Plano	HCA Healthcare	513	2171
Medical City McKinney	McKinney	HCA Healthcare	260	1010
Glen Oaks Hospital	Greenville	Universal Health Services, Inc.	54	135

REP. PAT FALLON (R) / TEXAS 4TH
5 HOSPITALS

Encompass Health Rehabilitation Hospital of Plano	Plano	Encompass Health	83	274
Medical City Frisco	Frisco	HCA Healthcare	54	270
Paris Regional Health	Paris	Lifepoint Health	356	1035
TMC Behavioral Health Center	Sherman	Universal Health Services, Inc.	60	
Texoma Medical Center	Denison	Universal Health Services, Inc.	326	2008

BACK TO TOP



			Beds	Employees
REP. LANCE GOODEN (R) / TEXAS 5TH				
3 HOSPITALS				
UT Health Quitman	Quitman	Ardent Health Services	25	181
UT Health Athens	Athens	Ardent Health Services	127	467
Dallas Regional Medical Center	Mesquite	Prime Healthcare Services	172	488

REP. JAKE ELLZEY (R) / TEXAS 6TH				
4 HOSPITALS				
UT Health Jacksonville	Jacksonville	Ardent Health Services	72	220
Navarro Regional Hospital	Corsicana	Community Health Systems	162	252
Ennis Regional Medical Center	Ennis	ScionHealth	60	
Palestine Regional Medical Center	Palestine	ScionHealth	160	

REP. LIZZIE PANNILL FLETCHER (D) / TEXAS 7TH				
3 HOSPITALS				
Houston Healthcare West	Houston	HCA Healthcare	302	1148
Kindred Hospital Sugar Land	Sugar Land	ScionHealth	105	242
Behavioral Hospital of Bellaire	Houston	Universal Health Services, Inc.	248	236

REP. MORGAN J. LUTTRELL (R) / TEXAS 8TH				
1 HOSPITALS				
Houston Healthcare Conroe	Conroe	HCA Healthcare	328	1179

REP. AL GREEN (D) / TEXAS 9TH				
7 HOSPITALS				
Encompass Health Rehabilitation Hospital of Pearland	Pearland	Encompass Health		
The Woman's Hospital of Texas	Houston	HCA Healthcare	419	1410
Texas Orthopedic Hospital	Houston	HCA Healthcare	49	449
Houston Healthcare Pearland	Pearland	HCA Healthcare	34	281
Houston Healthcare Medica Center	Houston	HCA Healthcare	444	480
Kindred Hospital Houston Medical Center	Houston	ScionHealth	110	359
West Oaks Hospital	Houston	Universal Health Services, Inc.	160	345

BACK TO TOP



			Beds	Employees
REP. MICHAEL MCCAUL (R) / TEXAS 10TH				
2 HOSPITALS				
CHI St. Joseph Health Rehabilitation Hospital	Bryan	Encompass Health	49	135
St. David's Round Rock Medical Center	Round Rock	HCA Healthcare	171	1001

REP. AUGUST PFLUGER II (R) / TEXAS 11TH				
2 HOSPITALS				
Encompass Health Rehabilitation Hospital of Midland Odessa	Midland	Encompass Health	60	225
River Crest Hospital	San Angelo	Universal Health Services, Inc.	80	157

REP. KAY GRANGER (R) / TEXAS 12TH				
5 HOSPITALS				
Encompass Health Rehabilitation Hospital of City View	Fort Worth	Encompass Health	62	202
Medical City Weatherford	Weatherford	HCA Healthcare	103	421
Medical City Fort Worth	Fort Worth	HCA Healthcare	320	1142
Texas Rehabilitation Hospital of Fort Worth	Fort Worth	Lifepoint Health	66	292
Kindred Hospital Tarrant County "Fort Worth Southwest	Fort Worth	ScionHealth	92	281

REP. RONNY JACKSON (R) / TEXAS 13TH				
11 HOSPITALS				
Physician Surgical Hospital	Amarillo	Ardent Health Services	41	179
BSA Hospital	Amarillo	Ardent Health Services	445	1995
Encompass Health Rehabilitation Hospital of Wichita Falls	Wichita Falls	Encompass Health	63	227
Medical City Denton	Denton	HCA Healthcare	208	935
Pampa Regional Medical Center	Pampa	Prime Healthcare Services	102	218
Texas Healthcare System Behavioral Health	Amarillo	Universal Health Services, Inc.	90	240
Mayhill Hospital	Denton	Universal Health Services, Inc.	59	156
University Behavioral Health of Denton	Denton	Universal Health Services, Inc.	104	237
The Recovery Center	Wichita Falls	Universal Health Services, Inc.	34	92
Northwest Texas Healthcare System	Amarillo	Universal Health Services, Inc.	405	1889
Northwest Emergency at Town Square	Amarillo	Universal Health Services, Inc.		

BACK TO TOP



			Beds	Employees
REP. RANDY WEBER (R) / TEXAS 14TH				
1 HOSPITALS				
Houston Healthcare Mainland	Texas City	HCA Healthcare	222	561

REP. MONICA DE LA CRUZ (R) / TEXAS 15TH				
11 HOSPITALS				
Rio Grande Regional Hospital	McAllen	HCA Healthcare	320	1110
Mission Regional Medical Center	Mission	Prime Healthcare Services	289	774
South Texas Health System ER Monte Cristo	Edinburg	Universal Health Services, Inc.		
South Texas Health System ER McColl	McAllen	Universal Health Services, Inc.		
South Texas Health System McAllen	McAllen	Universal Health Services, Inc.	441	2604
South Texas Health System Heart	McAllen	Universal Health Services, Inc.	60	
South Texas Health System ER Mission	Mission	Universal Health Services, Inc.		
South Texas Behavioral Health Center	Edinburg	Universal Health Services, Inc.	134	
South Texas Health System Edinburg	Edinburg	Universal Health Services, Inc.	127	
South Texas Health System Childrenâ€™s	Edinburg	Universal Health Services, Inc.	86	
Cornerstone Regional Hospital	Edinburg	Universal Health Services, Inc.	14	

REP. VERONICA ESCOBAR (D) / TEXAS 16TH				
9 HOSPITALS				
Del Sol Medical Center	El Paso	HCA Healthcare	347	1379
Las Palmas Rehabilitation Hospital	El Paso	HCA Healthcare		
Las Palmas Medical Center	El Paso	HCA Healthcare	327	1115
Kindred Hospital El Paso	El Paso	ScionHealth	72	197
The Hospitals of Providence Sierra Campus	El Paso	Tenet Healthcare Corporation	329	999
The Hospitals of Providence Transmountain Campus	El Paso	Tenet Healthcare Corporation		
The Hospitals of Providence Memorial Campus	El Paso	Tenet Healthcare Corporation	480	1507
The Hospitals of Providence East Campus	El Paso	Tenet Healthcare Corporation	182	881
El Paso Behavioral Health	El Paso	Universal Health Services, Inc.	163	430

^
BACK
TO TOP



			Beds	Employees
REP. PETE SESSIONS (R) / TEXAS 17TH				
4 HOSPITALS				
Woodland Heights Medical Center	Lufkin	Community Health Systems	149	563
Encompass Health Rehabilitation Hospital of Round Rock	Round Rock	Encompass Health	75	215
Parkview Regional Hospital	Mexia	ScionHealth	58	
Nacogdoches Medical Center	Nacogdoches	Tenet Healthcare Corporation	153	429
REP. SHEILA JACKSON LEE (D) / TEXAS 18TH				
2 HOSPITALS				
Encompass Health Rehabilitation Hospital of Humble	Humble	Encompass Health	90	192
Cypress Creek Hospital	Houston	Universal Health Services, Inc.	96	97
REP. JODEY ARRINGTON (R) / TEXAS 19TH				
1 HOSPITALS				
Encompass Health Rehabilitation Hospital of Abilene	Abilene	Encompass Health	30	136
REP. JOAQUIN CASTRO (D) / TEXAS 20TH				
9 HOSPITALS				
Encompass Health Rehabilitation Institute of San Antonio	San Antonio	Encompass Health	108	239
Methodist Specialty & Transplant Hospital	San Antonio	HCA Healthcare	383	1130
Methodist Children's Hospital of South Texas	San Antonio	HCA Healthcare		
Methodist Teksan Hospital	San Antonio	HCA Healthcare	120	515
Methodist Hospital	San Antonio	HCA Healthcare	1013	3995
Methodist Heart Hospital	San Antonio	HCA Healthcare		
Methodist Ambulatory Surgery Hospital NW	San Antonio	HCA Healthcare	22	
Kindred Hospital San Antonio	San Antonio	ScionHealth	59	136
St. Luke's Baptist Hospital	San Antonio	Tenet Healthcare Corporation	282	1004

^
BACK TO TOP



			Beds	Employees
REP. CHIP ROY (R) / TEXAS 21ST				
8 HOSPITALS				
Methodist ER Alamo Heights	San Antonio	HCA Healthcare		
Methodist Hospital Stone Oak	San Antonio	HCA Healthcare	242	1090
Methodist ER Boerne	Boerne	HCA Healthcare		
Methodist Ambulatory Surgery Center - North Central	San Antonio	HCA Healthcare		
Northeast Baptist Hospital	San Antonio	Tenet Healthcare Corporation	371	979
North Central Baptist Hospital	San Antonio	Tenet Healthcare Corporation	387	1253
Laurel Ridge Treatment Center	San Antonio	Universal Health Services, Inc.	250	500
San Marcos Treatment Center	San Marcos	Universal Health Services, Inc.	265	336
REP. TROY NEHLS (R) / TEXAS 22ND				
1 HOSPITALS				
Encompass Health Rehabilitation Hospital of Sugar Land	Sugar Land	Encompass Health	50	240
REP. TONY GONZALES II (R) / TEXAS 23RD				
1 HOSPITALS				
Fort Duncan Medical Center	Eagle Pass	Universal Health Services, Inc.	101	387
REP. BETH VAN DUYNE (R) / TEXAS 24TH				
5 HOSPITALS				
Encompass Health Rehabilitation Hospital of the Mid-Cities	Bedford	Encompass Health	60	213
Medical City North Hills	North Richland Hills	HCA Healthcare	164	706
Medical City Alliance	Fort Worth	HCA Healthcare	75	446
Kindred Hospital Dallas Central	Dallas	ScionHealth	60	159
Dallas Medical Center	Dallas	Prime Healthcare Services	155	328

↑
BACK TO TOP



			Beds	Employees
REP. ROGER WILLIAMS (R) / TEXAS 25TH				
6 HOSPITALS				
Lake Granbury Medical Center	Granbury	Community Health Systems	73	377
Encompass Health Rehabilitation Hospital of Arlington	Arlington	Encompass Health	85	270
Medical City Arlington	Arlington	HCA Healthcare	420	1460
Kindred Hospital Tarrant County – Arlington	Arlington	ScionHealth	68	172
Texas Rehabilitation Hospital of Arlington	Arlington	Lifepoint Health	40	170
Millwood Hospital	Arlington	Universal Health Services, Inc.	122	355
REP. MICHAEL C. BURGESS (R) / TEXAS 26TH				
1 HOSPITALS				
Medical City Lewisville	Lewisville	HCA Healthcare	186	784
REP. MICHAEL CLOUD (R) / TEXAS 27TH				
8 HOSPITALS				
DeTar Hospital Navarro	Victoria	Community Health Systems	308	1022
DeTar Hospital North	Victoria	Community Health Systems		
Corpus Christi Medical Center ER 24/7 Portland	Portland	HCA Healthcare		
Corpus Christi Medical Center - Heart Hospital	Corpus Christi	HCA Healthcare		
Corpus Christi Medical Center ER 24/7 Northwest	Corpus Christi	HCA Healthcare		
Corpus Christi Medical Center - Doctors Regional	Corpus Christi	HCA Healthcare		
Corpus Christi Medical Center	Corpus Christi	HCA Healthcare	631	1455
Corpus Christi Medical Center - Bay Area	Corpus Christi	HCA Healthcare		
REP. HENRY CUELLAR (D) / TEXAS 28TH				
4 HOSPITALS				
Laredo Medical Center	Laredo	Community Health Systems	326	1170
Mission Trail Baptist Hospital	San Antonio	Tenet Healthcare Corporation	110	550
Doctors Hospital of Laredo	Laredo	Universal Health Services, Inc.	183	873
Doctors Hospital ER South	Laredo	Universal Health Services, Inc.		
REP. SYLVIA GARCIA (D) / TEXAS 29TH				
1 HOSPITALS				
Houston Healthcare Northwest	Houston	HCA Healthcare	423	1299

↑
BACK TO TOP



			Beds	Employees
REP. JASMINE CROCKETT (D) / TEXAS 30TH				
2 HOSPITALS				
Methodist Rehabilitation Hospital	Dallas	Lifepoint Health	40	182
Hickory Trail Hospital	Desoto	Universal Health Services, Inc.	86	201

REP. JOHN CARTER (R) / TEXAS 31ST				
5 HOSPITALS				
Seton Medical Center Harker Heights	Harker Heights	Ardent Health Services	83	300
Cedar Park Regional Medical Center	Cedar Park	Community Health Systems	93	588
St. David's Surgical Hospital	Round Rock	HCA Healthcare	46	
St. David's Georgetown Hospital	Georgetown	HCA Healthcare	111	
Meridell Achievement Center	Liberty Hill	Universal Health Services, Inc.	134	199

REP. COLIN ALLRED (D) / TEXAS 32ND				
5 HOSPITALS				
Encompass Health Rehabilitation Hospital of Richardson	Richardson	Encompass Health	50	186
Encompass Health Rehabilitation Hospital of Dallas	Dallas	Encompass Health	60	143
Medical City Dallas Hospital	Dallas	HCA Healthcare	839	3145
Medical City Green Oaks Hospital	Dallas	HCA Healthcare	124	336
Medical City Children's Hospital	Dallas	HCA Healthcare		

REP. MARC VEASEY (D) / TEXAS 33RD				
1 HOSPITALS				
Medical City Las Colinas	Irving	HCA Healthcare	100	477

REP. VICENTE GONZALEZ (D) / TEXAS 34TH				
6 HOSPITALS				
Valley Regional Medical Center	Brownsville	HCA Healthcare	214	768
Harlingen Medical Center	Harlingen	Prime Healthcare Services	112	611
Knapp Medical Center	Weslaco	Prime Healthcare Services	233	694
Valley Baptist Medical Center - Harlingen	Harlingen	Tenet Healthcare Corporation	586	1199
Valley Baptist Medical Center - Brownsville	Brownsville	Tenet Healthcare Corporation	280	776
South Texas Health System ER Weslaco	Weslaco	Universal Health Services, Inc.		

↑
BACK TO TOP



			Beds	Employees
REP. GREGORIO CASAR (D) / TEXAS 35TH				
5 HOSPITALS				
Methodist Hospital Northeast	San Antonio	HCA Healthcare	177	869
Metropolitan Hospital Methodist	San Antonio	HCA Healthcare	354	1358
Kindred Hospital San Antonio Central	San Antonio	ScionHealth	44	108
Resolute Health Hospital	New Braunfels	Tenet Healthcare Corporation	128	424
Baptist Medical Center	San Antonio	Tenet Healthcare Corporation	623	1358

REP. BRIAN BABIN (R) / TEXAS 36TH				
3 HOSPITALS				
Houston Healthcare Southeast	Pasadena	HCA Healthcare	341	1282
HCA Houston Healthcare - Clear Lake	Webster	HCA Healthcare	490	1914
Kindred Hospital Clear Lake	Webster	ScionHealth	110	260

REP. LLOYD DOGGETT II (D) / TEXAS 37TH				
10 HOSPITALS				
Encompass Health Rehabilitation Hospital of Austin	Austin	Encompass Health	60	196
St. David's South Austin Medical Center	Austin	HCA Healthcare	300	1736
St. David's Rehabilitation Hospital	Austin	HCA Healthcare		
St. David's Medical Center	Austin	HCA Healthcare	426	2143
St. David's Children's Hospital	Austin	HCA Healthcare		
Heart Hospital of Austin	Austin	HCA Healthcare	58	371
St. David's North Austin Medical Center	Austin	HCA Healthcare	379	1857
Central Texas Rehabilitation Hospital	Austin	Lifepoint Health	50	197
Texas Neurorehab Center	Austin	Universal Health Services, Inc.	151	406
Austin Oaks Hospital	Austin	Universal Health Services, Inc.	80	212

REP. WESLEY HUNT (R) / TEXAS 38TH				
6 HOSPITALS				
Encompass Health Rehabilitation Hospital of Cypress	Houston	Encompass Health	60	239
Encompass Health Rehabilitation Hospital The Vintage	Houston	Encompass Health	60	141
HCA Houston ER 24/7 "Cypress Fairbanks"	Houston	HCA Healthcare	181	742
Houston Healthcare Tomball	Tomball	HCA Healthcare	350	872
HCA Houston Healthcare North Cypress	Cypress	HCA Healthcare	163	1300
Kindred Hospital Tomball	Tomball	ScionHealth	75	169

BACK TO TOP