



# NEW MEXICO

## FAH MEMBER FACILITIES

### SENATE

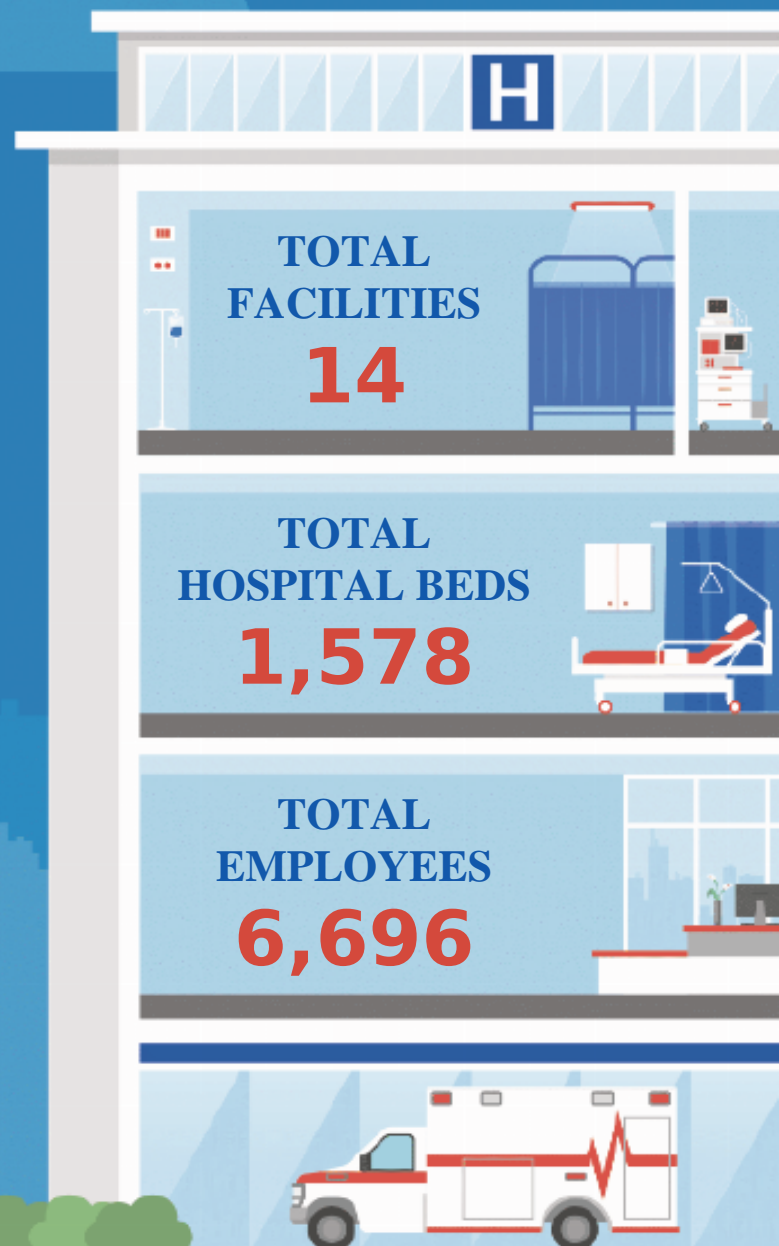
Sen. Martin Heinrich (D)  
Sen. Ben Ray Lujan (D)

### HOUSE *(Click name to view the district)*

Rep. Melanie A. Stansbury (D) / New Mexico 1st  
Rep. Gabe Vasquez (D) / New Mexico 2nd  
Teresa Leger Fernandez (D) / New Mexico 3rd



Federation of American Hospitals represents America's tax-paying community hospitals and health systems.





# NEW MEXICO FAH MEMBER FACILITIES

## REP. MELANIE A. STANSBURY (D) / NEW MEXICO 1ST

### 6 HOSPITALS

Hospital	City	FAH Member	Beds	Employees
Heart Hospital of NM at Lovelace Medical Center	Albuquerque	Ardent Health	55	173
Lovelace Medical Center	Albuquerque	Ardent Health	263	1,135
Lovelace Westside Hospital	Albuquerque	Ardent Health	92	272
Lovelace Women's Hospital	Albuquerque	Ardent Health	120	647
Encompass Health Rehabilitation Hospital of Albuquerque	Albuquerque	Encompass Health	87	250
Kindred Hospital Albuquerque	Albuquerque	ScionHealth	61	155

## REP. GABE VASQUEZ (D) / NEW MEXICO 2ND

### 4 HOSPITALS

Hospital	City	FAH Member	Beds	Employees
Carlsbad Medical Center	Carlsbad	Community Health Systems	115	327
MountainView Regional Medical Center	Las Cruces	Community Health Systems	168	911
Memorial Medical Center	Las Cruces	Lifepoint Health	199	1,259
Mesilla Valley Hospital	Las Cruces	UHS	120	457

## TERESA LEGER FERNANDEZ (D) / NEW MEXICO 3RD

### 4 HOSPITALS

Hospital	City	FAH Member	Beds	Employees
Lovelace Regional Hospital Roswell	Roswell	Ardent Health	27	167
Lovelace UNM Rehabilitation Hospital	Albuquerque	Ardent Health	62	233
Eastern New Mexico Medical Center	Roswell	Community Health Systems	162	439
Los Alamos Medical Center	Los Alamos	Lifepoint Health	47	271

