



# MISSOURI

FAH MEMBER FACILITIES

## SENATE

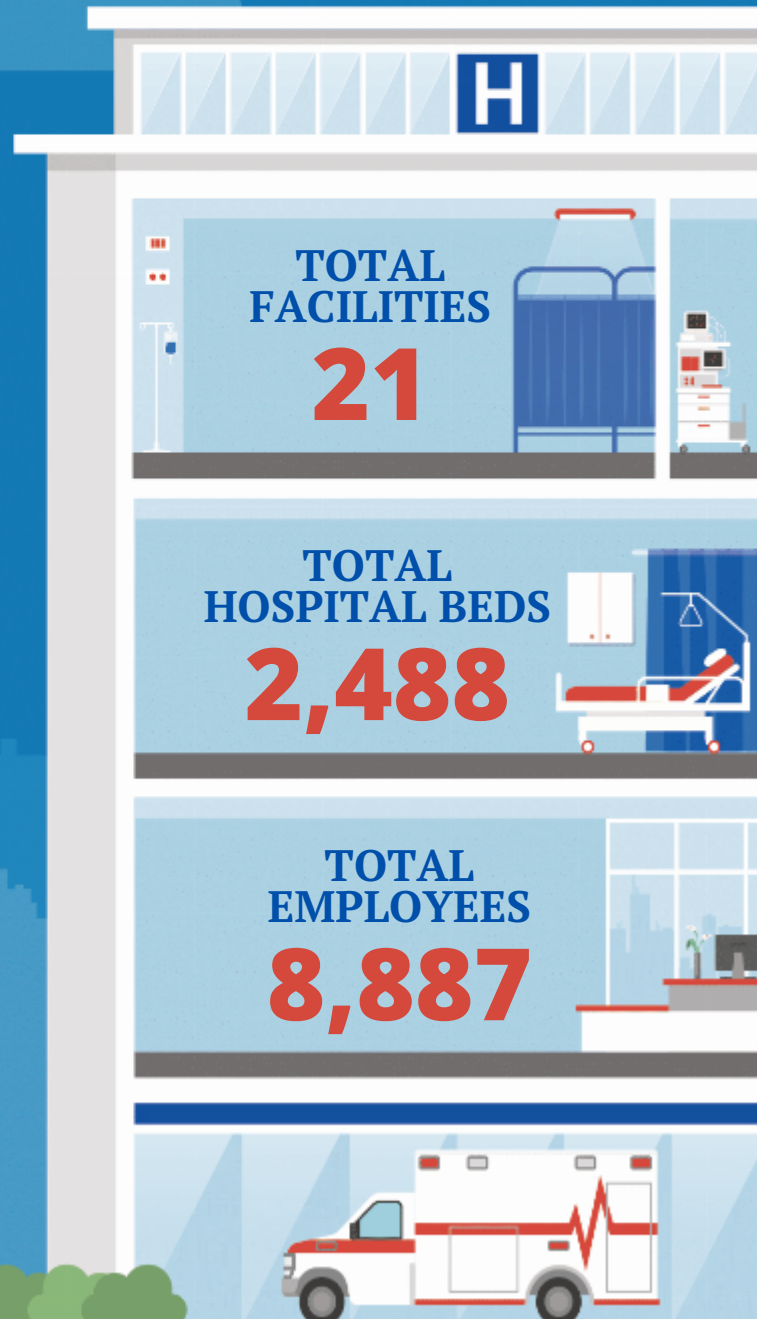
Sen. Josh Hawley (R)  
Sen. Eric S. Schmitt (R)

## HOUSE *(Click name to view the district)*

Rep. Cori Bush (D) / Missouri 1st  
Rep. Ann Wagner (R) / Missouri 2nd  
Rep. Mark Alford (R) / Missouri 4th  
Rep. Emanuel Cleaver II (D) / Missouri 5th  
Rep. Sam Graves (R) / Missouri 6th  
Rep. Eric Burlison (R) / Missouri 7th  
Rep. Jason Smith (R) / Missouri 8th



Federation of American Hospitals represents America's tax-paying community hospitals and health systems.





# MISSOURI FAH MEMBER FACILITIES

			Beds	Employees
<b>REP. CORI BUSH (D) / MISSOURI 1ST</b>				
<b>3 HOSPITALS</b>				
St. Louis Behavioral Medicine Institute	Saint Louis	Universal Health Services, Inc.		89
The Rehabilitation Institute of St. Louis	Saint Louis	Encompass Health	96	384
Kindred Hospital St. Louis	Saint Louis	ScionHealth	60	117
<b>REP. ANN WAGNER (R) / MISSOURI 2ND</b>				
<b>2 HOSPITALS</b>				
Kindred Hospital St. Louis St. Anthony's	Saint Louis	ScionHealth	38	110
Mercy Rehabilitation Hospital St. Louis	Chesterfield	Lifepoint Health	90	64
<b>REP. MARK ALFORD (R) / MISSOURI 4TH</b>				
<b>5 HOSPITALS</b>				
Heartland Behavioral Health Services	Nevada	Universal Health Services, Inc.	151	236
Rusk Rehabilitation Hospital	Columbia	Encompass Health	60	236
Lafayette Regional Health Center	Lexington	HCA Healthcare	32	
St. Mary's Medical Center	Blue Springs	Prime Healthcare Services	111	414
Belton Regional Medical Center	Belton	HCA Healthcare	71	320
<b>REP. EMANUEL CLEAVER II (D) / MISSOURI 5TH</b>				
<b>7 HOSPITALS</b>				
Centerpoint Medical Center	Independence	HCA Healthcare	257	1462
St. Joseph Medical Center	Kansas City	Prime Healthcare Services	300	755
Kindred Hospital Northland	Kansas City	ScionHealth	35	132
Lee's Summit Medical Center	Lee's Summit	HCA Healthcare	80	490
Research Medical Center	Kansas City	HCA Healthcare	590	2380
Research Medical Center Brookside	Kansas City	HCA Healthcare		
Research Psychiatric Center	Kansas City	HCA Healthcare		
<b>REP. SAM GRAVES (R) / MISSOURI 6TH</b>				
<b>2 HOSPITALS</b>				
Northeast Regional Medical Center	Kirkville	Community Health Systems	115	412
Moberly Regional Medical Center	Moberly	Community Health Systems	101	282

BACK TO TOP



# MISSOURI FAH MEMBER FACILITIES

			Beds	Employees
<b>REP. ERIC BURLISON (R) / MISSOURI 7TH</b>				
<b>1 HOSPITALS</b>				
Mercy Rehabilitation Hospital Springfield	Springfield	ScionHealth	60	46
<b>REP. JASON SMITH (R) / MISSOURI 8TH</b>				
<b>1 HOSPITALS</b>				
Poplar Bluff Regional Medical Center	Poplar Bluff	Community Health Systems	241	958

^  
BACK  
TO TOP