



MISSISSIPPI

FAH MEMBER FACILITIES

SENATE

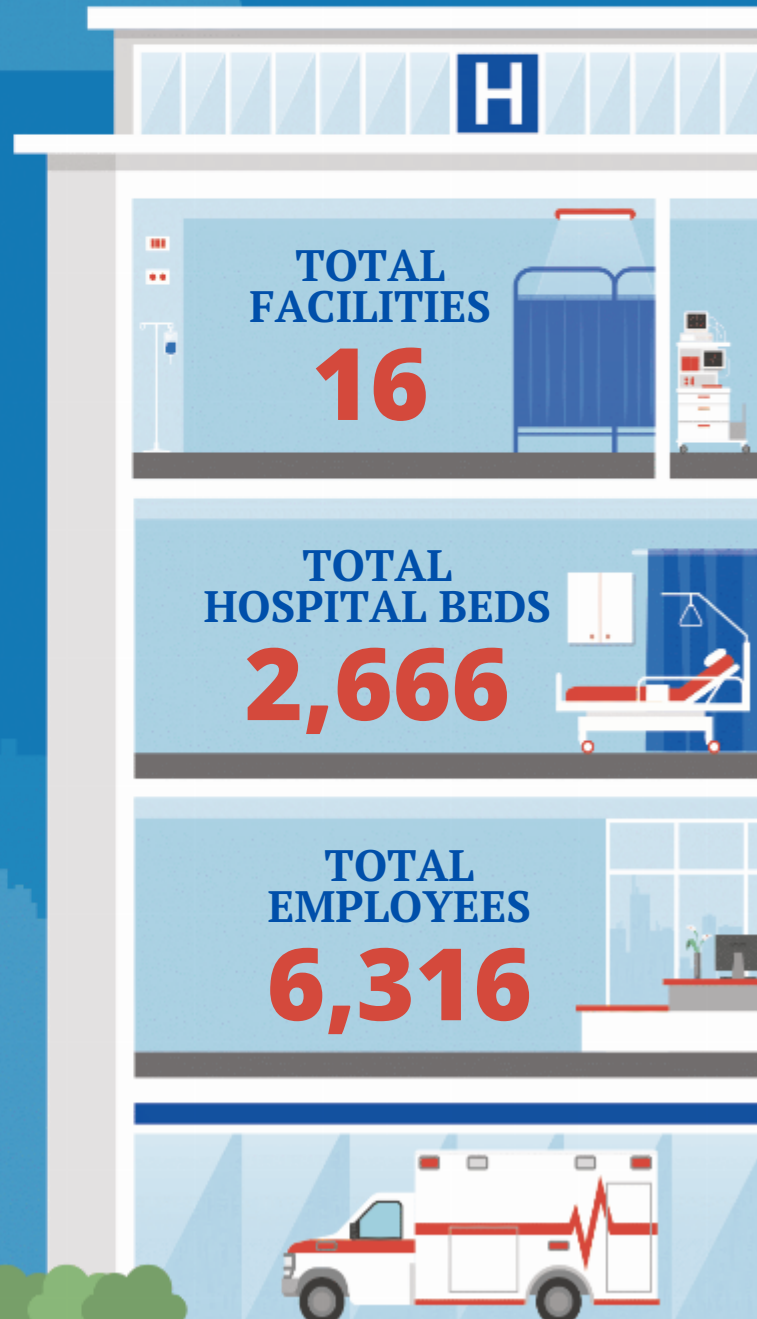
Sen. Roger Wicker (R)
Sen. Cindy Hyde-Smith (R)

HOUSE *(Click name to view the district)*

Rep. Trent Kelly (R) / Mississippi 1st
Rep. Bennie G. Thompson (D) / Mississippi 2nd
Rep. Michael Guest (R) / Mississippi 3rd
Rep. Mike Ezell (R) / Mississippi 4th



Federation of American Hospitals represents America's tax-paying community hospitals and health systems.





MISSISSIPPI FAH MEMBER FACILITIES

			Beds	Employees
REP. TRENT KELLY (R) / MISSISSIPPI 1ST				
1 HOSPITALS				
Parkwood Behavioral Health System	Olive Branch	Universal Health Services, Inc.	148	284
REP. BENNIE G. THOMPSON (D) / MISSISSIPPI 2ND				
5 HOSPITALS				
Merit Health Central	Jackson	Community Health Systems	429	868
Merit Health River Region	Vicksburg	Community Health Systems	372	732
Merit Health Natchez	Natchez	Community Health Systems	179	511
Merit Health Madison	Canton	Community Health Systems	67	272
Bolivar Medical Center	Cleveland	ScionHealth	164	
REP. MICHAEL GUEST (R) / MISSISSIPPI 3RD				
6 HOSPITALS				
Merit Health Woman's Hospital	Flowood	Community Health Systems	109	213
Merit Health River Oaks	Flowood	Community Health Systems	160	662
Merit Health Rankin	Brandon	Community Health Systems	149	294
Brentwood Behavioral Healthcare of Mississippi	Flowood	Universal Health Services, Inc.	121	261
The Crossings at Alliance Health Center	Meridian	Universal Health Services, Inc.	214	360
Diamond Grove Center for Children	Louisville	Universal Health Services, Inc.	55	142
REP. MIKE EZELL (R) / MISSISSIPPI 4TH				
4 HOSPITALS				
Merit Health Wesley	Hattiesburg	Community Health Systems	211	886
Merit Health Biloxi	Biloxi	Community Health Systems	198	694
Encompass Health Rehabilitation Hospital	Gulfport	Encompass Health		
Gulfport Behavioral Health System	Gulfport	Universal Health Services, Inc.	90	137

↑
BACK
TO TOP