



MASSACHUSETTS

FAH MEMBER FACILITIES

SENATE

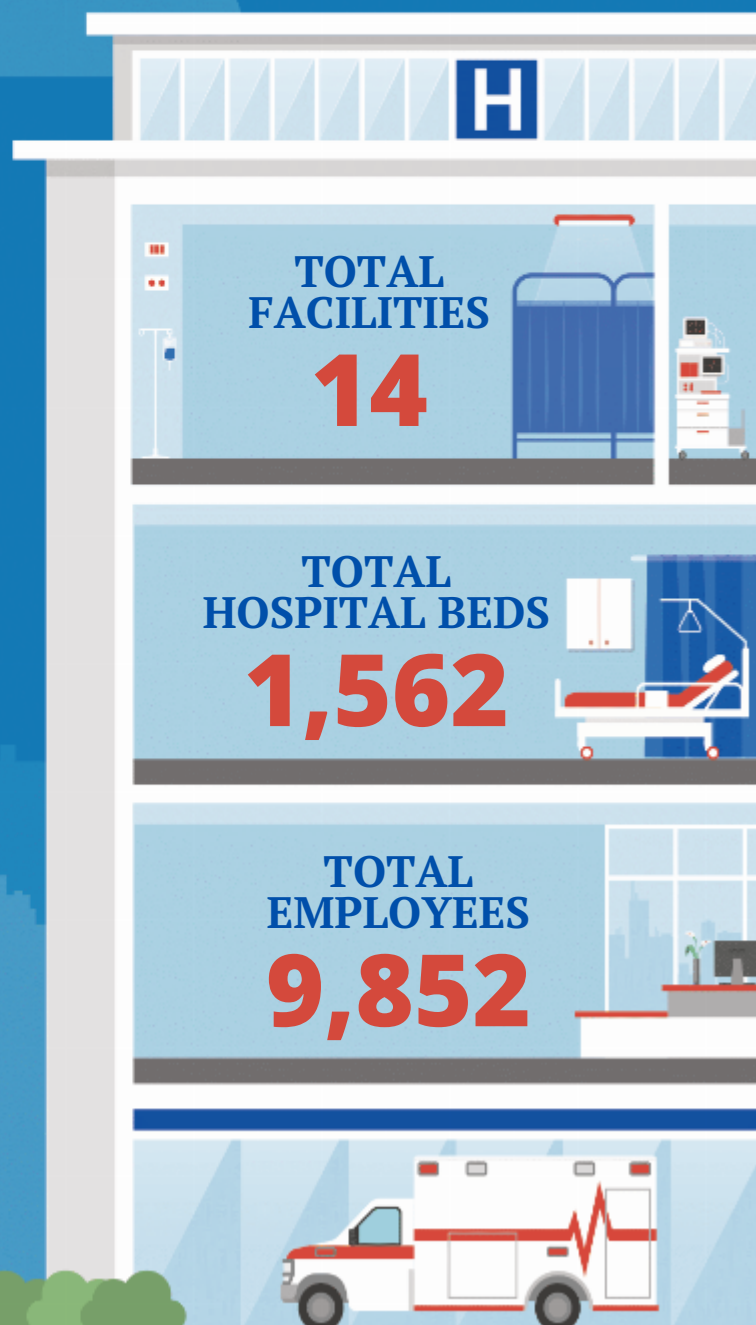
Sen. Elizabeth Warren (D)
Sen. Ed Markey (D)

HOUSE *(Click name to view the district)*

Rep. Richard Neal (D) / Massachusetts 1st
Rep. Jim McGovern (D) / Massachusetts 2nd
Rep. Jake Auchincloss (D) / Massachusetts 4th
Rep. Katherine Clark (D) / Massachusetts 5th
Rep. Stephen Lynch (D) / Massachusetts 8th
Rep. Bill Keating (D) / Massachusetts 9th



Federation of American Hospitals represents America's tax-paying community hospitals and health systems.





			Beds	Employees
REP. RICHARD NEAL (D) / MASSACHUSETTS 1ST				
2 HOSPITALS				
Encompass Health Rehabilitation Hospital of Western Massachusetts	Ludlow	Encompass Health	53	228
Valley Springs Behavioral Health Hospital	Holyoke	Lifepoint Health		
REP. JIM MCGOVERN (D) / MASSACHUSETTS 2ND				
2 HOSPITALS				
Fairlawn Rehabilitation Hospital	Worcester	Encompass Health	110	376
St. Vincent Hospital	Worcester	Tenet Healthcare Corporation	283	2434
REP. JAKE AUCHINCLOSS (D) / MASSACHUSETTS 4TH				
2 HOSPITALS				
HRI Hospital	Brookline	Universal Health Services, Inc.	62	220
Fuller Hospital	Attleboro	Universal Health Services, Inc.	102	391
REP. KATHERINE CLARK (D) / MASSACHUSETTS 5TH				
3 HOSPITALS				
Encompass Health Rehabilitation Hospital of New England	Woburn	Encompass Health	210	407
MetroWest Medical Center - Leonard Morse	Natick	Tenet Healthcare Corporation	152	2025
MetroWest Medical Center - Framingham	Framingham	Tenet Healthcare Corporation	147	2025
REP. STEPHEN LYNCH (D) / MASSACHUSETTS 8TH				
2 HOSPITALS				
Encompass Health Rehabilitation Hospital of Braintree	Braintree	Encompass Health	187	459
Arbour Hospital	Jamaica Plain	Universal Health Services, Inc.	136	458
REP. BILL KEATING (D) / MASSACHUSETTS 9TH				
3 HOSPITALS				
Arbour Senior Care	Rockland	Universal Health Services, Inc.		
Pembroke Hospital	Pembroke	Universal Health Services, Inc.	120	305
Arbour Counseling Services	Rockland	Universal Health Services, Inc.		524

↑
BACK TO TOP