



KENTUCKY

FAH MEMBER FACILITIES

SENATE

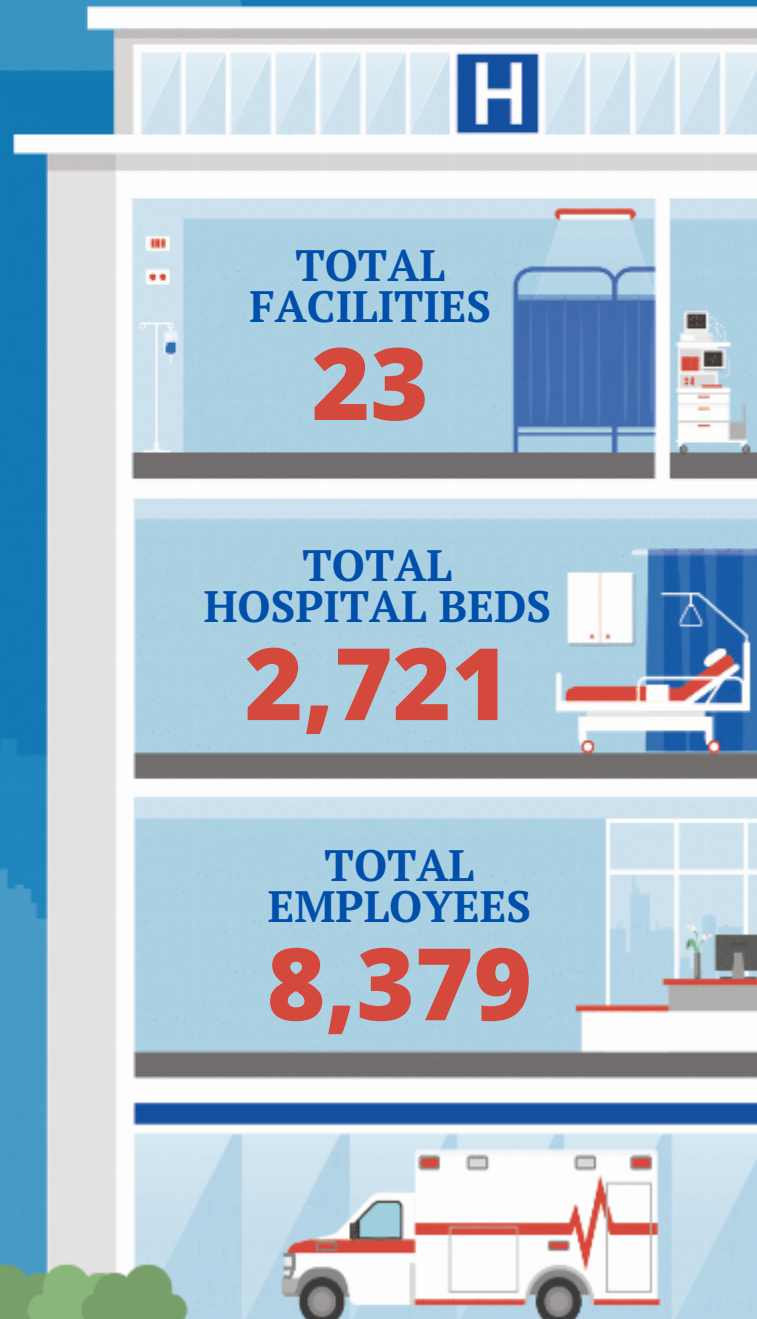
Sen. Mitch McConnell (R)
Sen. Rand Paul (R)

HOUSE *(Click name to view the district)*

Rep. James Comer Jr. (R) / Kentucky 1st
Rep. Brett Guthrie (R) / Kentucky 2nd
Rep. Morgan McGarvey (D) / Kentucky 3rd
Rep. Thomas Massie (R) / Kentucky 4th
Rep. Hal Rogers (R) / Kentucky 5th
Rep. Andy Barr IV (R) / Kentucky 6th



Federation of American Hospitals represents America's tax-paying community hospitals and health systems.





			Beds	Employees
REP. JAMES COMER JR. (R) / KENTUCKY 1ST				
5 HOSPITALS				
Frankfort Regional Medical Center	Frankfort	HCA Healthcare	173	722
Jackson Purchase Medical Center	Mayfield	Lifepoint Health	107	586
Spring View Hospital	Lebanon	Lifepoint Health	75	280
Cumberland Hall Hospital	Hopkinsville	Universal Health Services, Inc.	97	156
Logan Memorial Hospital	Russellville	ScionHealth	75	
REP. BRETT GUTHRIE (R) / KENTUCKY 2ND				
4 HOSPITALS				
Encompass Health Rehabilitation Hospital of Lakeview	Elizabethtown	Encompass Health	40	164
Rivendell Behavioral Health Hospital	Bowling Green	Universal Health Services, Inc.	125	228
TriStar Greenview Regional Hospital	Bowling Green	HCA Healthcare	211	571
Lincoln Trail Behavioral Health System	Radcliff	Universal Health Services, Inc.	140	252
REP. MORGAN MCGARVEY (D) / KENTUCKY 3RD				
4 HOSPITALS				
Kindred Hospital Louisville	Louisville	ScionHealth	384	444
Kindred Hospital Louisville at Jewish Hospital	Louisville	ScionHealth	30	81
The Brook Hospital at Dupont	Louisville	Universal Health Services, Inc.	88	224
The Brook Hospital at KMI	Louisville	Universal Health Services, Inc.	110	224
REP. THOMAS MASSIE (R) / KENTUCKY 4TH				
2 HOSPITALS				
Encompass Health Rehabilitation Hospital of Northern Kentucky	Ft Mitchell	Encompass Health	40	187
Meadowview Regional Medical Center	Maysville	Lifepoint Health	100	416
REP. HAL ROGERS (R) / KENTUCKY 5TH				
1 HOSPITALS				
Lake Cumberland Regional Hospital	Somerset	Lifepoint Health	295	1377

^
BACK TO TOP



			Beds	Employees
REP. ANDY BARR IV (R) / KENTUCKY 6TH				
7 HOSPITALS				
Bourbon Community Hospital	Paris	Lifepoint Health	58	253
Bluegrass Community Hospital	Versailles	Lifepoint Health	25	124
Clark Regional Medical Center	Winchester	Lifepoint Health	79	570
Georgetown Community Hospital	Georgetown	Lifepoint Health	75	428
Fleming County Hospital	Flemingsburg	Lifepoint Health	52	195
The Ridge Behavioral Health System	Lexington	Universal Health Services, Inc.	110	279
Cardinal Hill Rehabilitation Hospital	Lexington	Encompass Health	232	618

^
BACK
TO TOP