



IDAHO

FAH MEMBER FACILITIES

SENATE

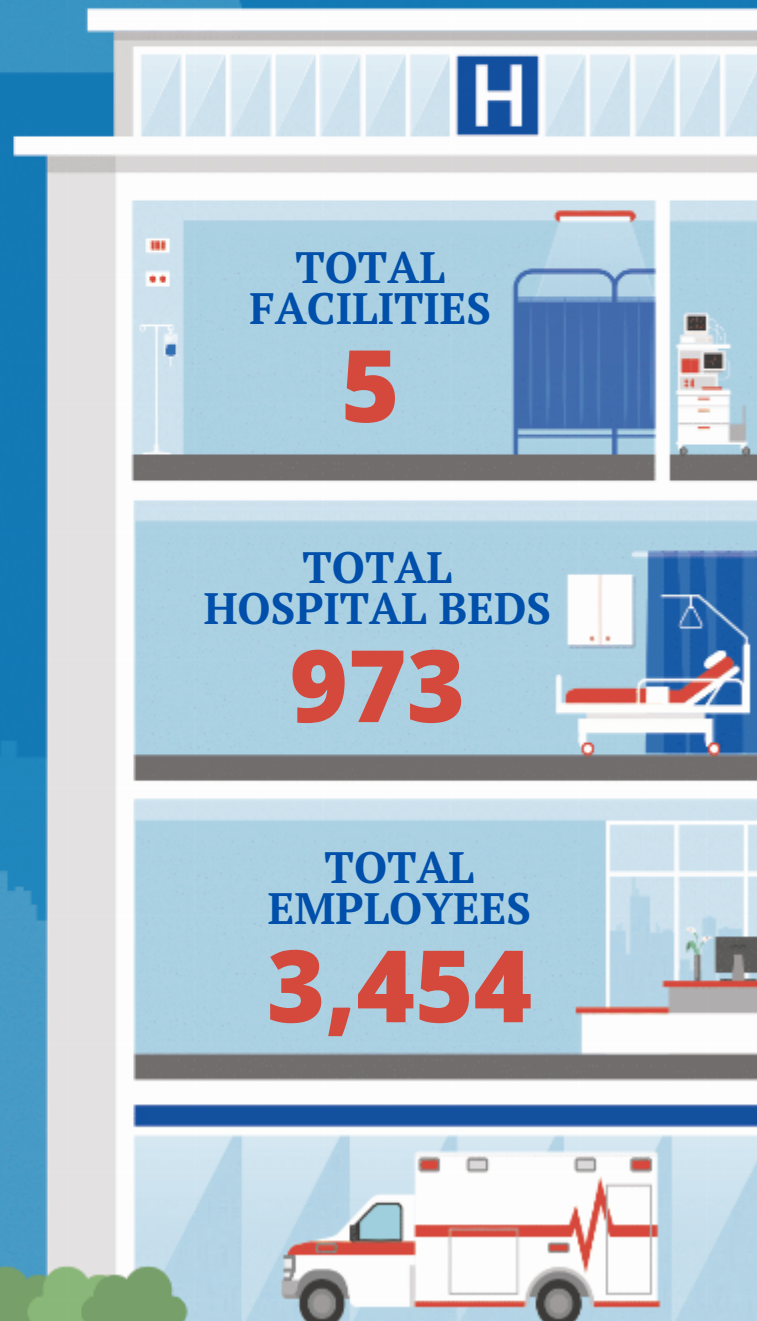
Sen. Mike Crapo (R)
Sen. James E. Risch (R)

HOUSE *(Click name to view the district)*

Rep. Russ Fulcher (R) / Idaho 1st
Rep. Mike Simpson (R) / Idaho 2nd



Federation of American Hospitals represents America's tax-paying community hospitals and health systems.





IDAHO FAH MEMBER FACILITIES

			Beds	Employees
REP. RUSS FULCHER (R) / IDAHO 1ST				
2 HOSPITALS				
West Valley Medical Center	Caldwell	HCA Healthcare	150	504
St. Joseph Regional Medical Center	Lewiston	ScionHealth	145	
REP. MIKE SIMPSON (R) / IDAHO 2ND				
3 HOSPITALS				
Portneuf Medical Center	Pocatello	Ardent Health Services	205	1300
Eastern Idaho Regional Medical Center	Idaho Falls	HCA Healthcare	318	1383
Intermountain Hospital	Boise	Universal Health Services, Inc.	155	267

^
BACK
TO TOP