

DISTRICT OF COLUMBIA

FAH MEMBER FACILITIES

SENATE

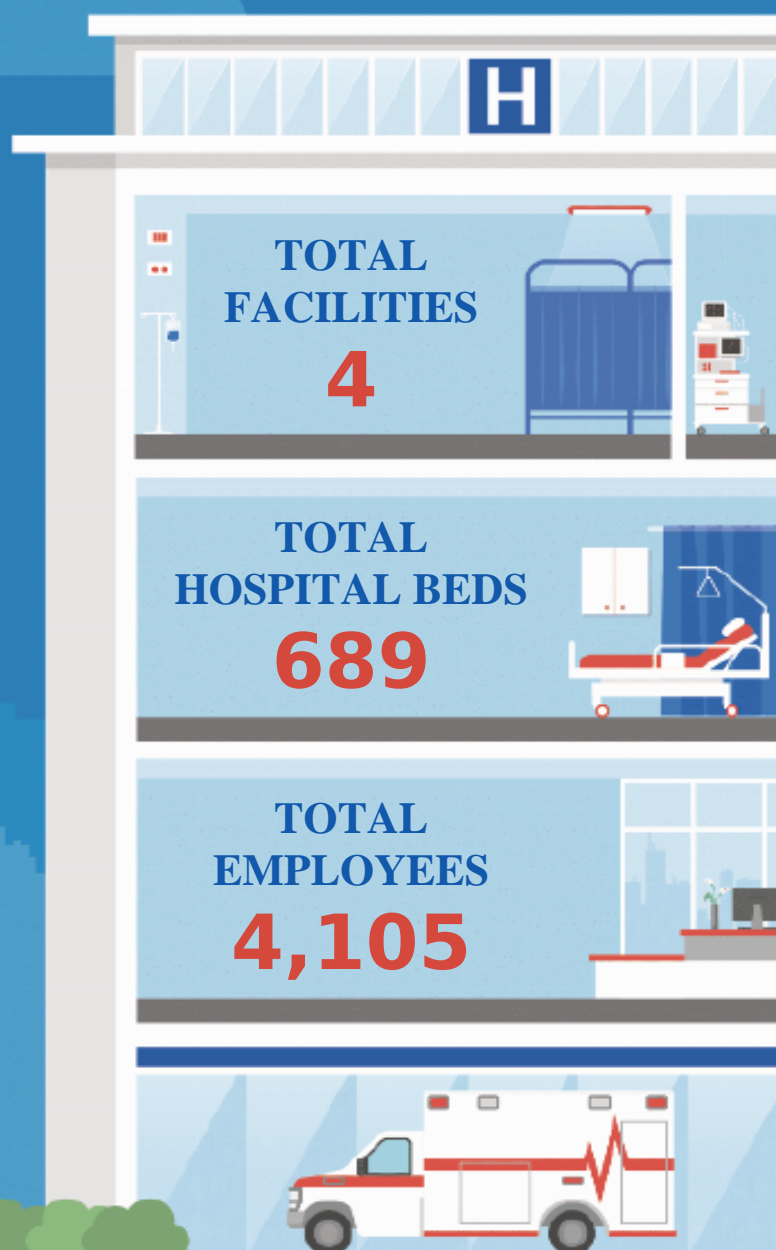
No Senate data available.

HOUSE *(Click name to view the district)*

Del. Eleanor Holmes Norton (D)



Federation of American Hospitals represents America's tax-paying community hospitals and health systems.





DEL. ELEANOR HOLMES NORTON (D)

4 HOSPITALS

Hospital	City	FAH Member	Beds	Employees
Cedar Hill Regional Medical Center GW Health	Washington	UHS	142	640
Cedar Hill Urgent Care GW Health	Washington	UHS		18
Psychiatric Institute of Washington	Washington	UHS	152	373
The George Washington University Hospital	Washington	UHS	395	3,074