



# DELAWARE

FAH MEMBER FACILITIES

## SENATE

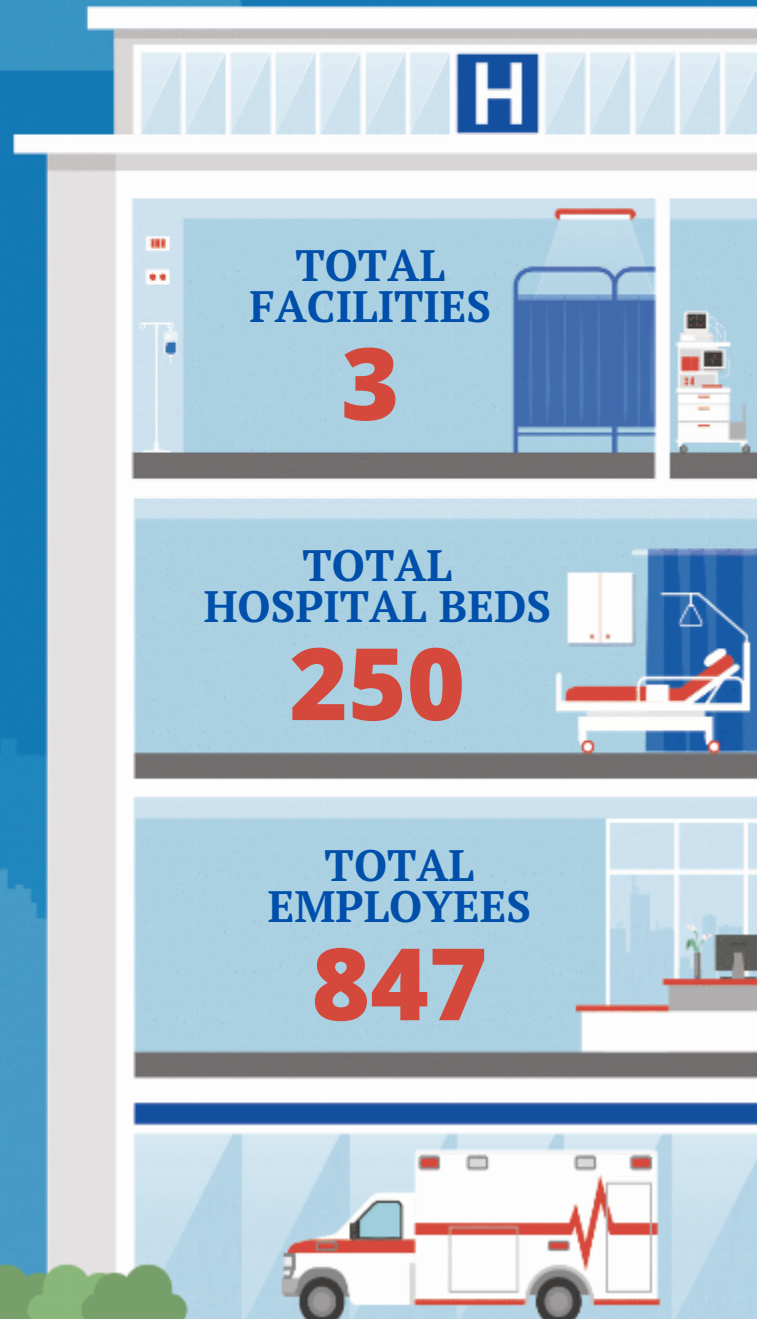
Sen. Tom Carper (D)  
Sen. Chris Coons (D)

## HOUSE *(Click name to view the district)*

Rep. Lisa Blunt Rochester (D) / Delaware At-Large



Federation of American Hospitals represents America's tax-paying community hospitals and health systems.





# DELAWARE FAH MEMBER FACILITIES

			Beds	Employees
<b>DELAWARE AT-LARGE</b>				
<b>3 HOSPITALS</b>				
Encompass Health Rehabilitation Hospital of Middletown	Middletown	Encompass Health	34	156
Rockford Center	Newark	Universal Health Services, Inc.	128	384
Dover Behavioral Health System	Dover	Universal Health Services, Inc.	88	307

^  
BACK  
TO TOP