



CALIFORNIA

FAH MEMBER FACILITIES

SENATE

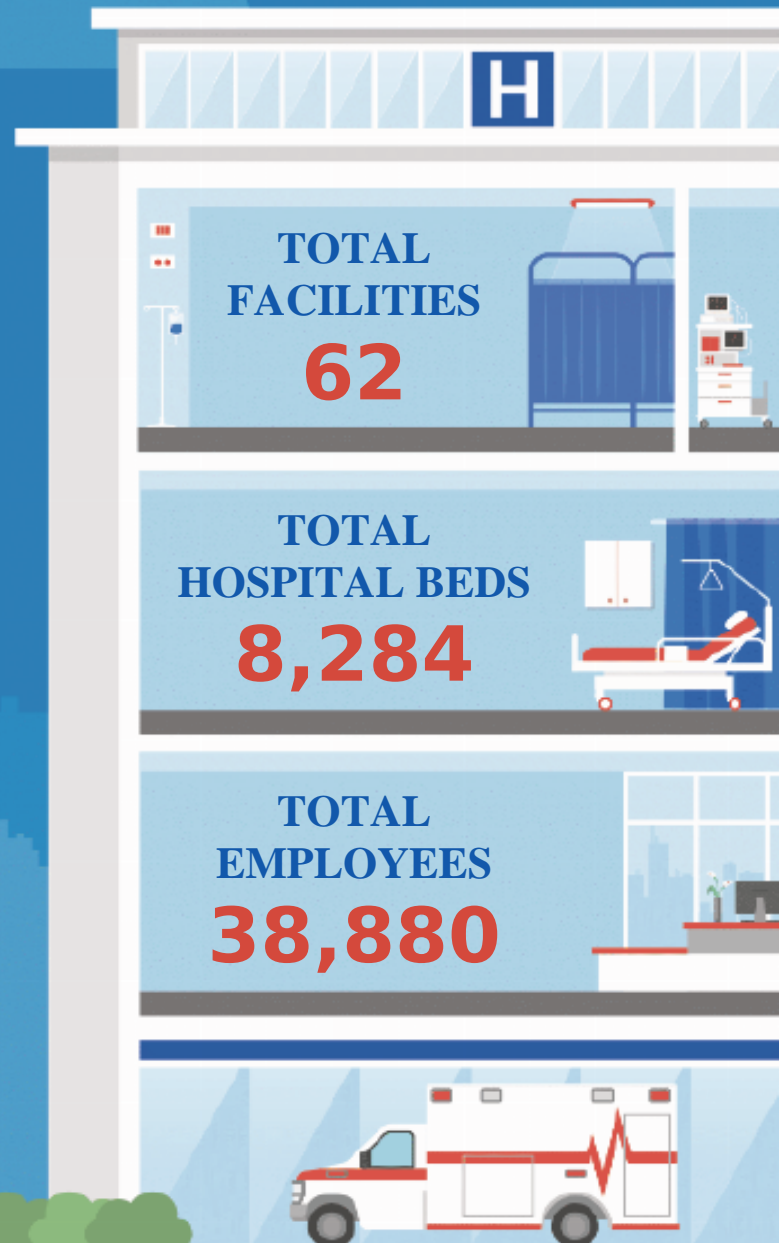
- Sen. Alex Padilla (D)
- Sen. Adam Schiff (D)

HOUSE *(Click name to view the district)*

- Rep. Douglas LaMalfa (R) / California 1st
- Rep. Tom McClintock (R) / California 5th
- Rep. Ami Bera (D) / California 6th
- Rep. Doris O. Matsui (D) / California 7th
- Rep. Josh Harder (D) / California 9th
- Rep. Mark DeSaulnier (D) / California 10th
- Rep. Nancy Pelosi (D) / California 11th
- Rep. Eric Swalwell (D) / California 14th
- Rep. Sam T. Liccardo (D) / California 16th
- Rep. Vince Fong (R) / California 20th
- Rep. Jay Obernolte (R) / California 23rd
- Rep. Raul Ruiz (D) / California 25th
- Rep. Julia Brownley (D) / California 26th
- Rep. George T. Whitesides (D) / California 27th
- Rep. Judy Chu (D) / California 28th
- Rep. Gil Cisneros (D) / California 31st
- Rep. Norma Torres (D) / California 35th
- Rep. Ted Lieu (D) / California 36th
- Rep. Sydney K. Kamlager-Dove (D) / California 37th
- Rep. Mark Takano (D) / California 39th
- Rep. Young Kim (R) / California 40th
- Rep. Ken Calvert (R) / California 41st
- Rep. Maxine Waters (D) / California 43rd
- Rep. Nanette Barragan (D) / California 44th
- Rep. Derek Tran (D) / California 45th
- Rep. Lou Correa (D) / California 46th
- Rep. Darrell Issa (R) / California 48th
- Rep. Scott H. Peters (D) / California 50th
- Rep. Sara Jacobs (D) / California 51st
- Rep. Juan Vargas (D) / California 52nd



Federation of American Hospitals represents America's tax-paying community hospitals and health systems.





CALIFORNIA FAH MEMBER FACILITIES

REP. DOUGLAS LAMALFA (R) / CALIFORNIA 1ST

1 HOSPITAL

Hospital	City	FAH Member	Beds	Employees
Shasta Regional Medical Center	Redding	Prime Healthcare Services	226	703

REP. TOM MCCLINTOCK (R) / CALIFORNIA 5TH

4 HOSPITALS

Hospital	City	FAH Member	Beds	Employees
Encompass Health Rehabilitation Hospital of Modesto	Modesto	Encompass Health	50	256
Doctors Medical Center of Modesto	Modesto	Tenet Healthcare	461	2,546
Emanuel Medical Center	Turlock	Tenet Healthcare	209	1,045
River Vista Behavioral Health	Madera	UHS	128	314

REP. AMI BERA (D) / CALIFORNIA 6TH

2 HOSPITALS

Hospital	City	FAH Member	Beds	Employees
Heritage Oaks Hospital	Sacramento	UHS	125	498
Heritage Oaks Patient Enrichment Center	Sacramento	UHS	16	75

REP. DORIS O. MATSUI (D) / CALIFORNIA 7TH

2 HOSPITALS

Hospital	City	FAH Member	Beds	Employees
UC Davis Rehabilitation Hospital	Sacramento	Lifepoint Health	52	117
Sierra Vista Hospital	Sacramento	UHS	171	635

BACK TO TOP



CALIFORNIA FAH MEMBER FACILITIES

REP. JOSH HARDER (D) / CALIFORNIA 9TH

1 HOSPITAL

Hospital	City	FAH Member	Beds	Employees
Doctors Hospital of Manteca	Manteca	Tenet Healthcare	73	503

REP. MARK DESAULNIER (D) / CALIFORNIA 10TH

1 HOSPITAL

Hospital	City	FAH Member	Beds	Employees
San Ramon Regional Medical Center	San Ramon	Tenet Healthcare	123	643

REP. NANCY PELOSI (D) / CALIFORNIA 11TH

1 HOSPITAL

Hospital	City	FAH Member	Beds	Employees
Foundations San Francisco	San Francisco	UHS		18

REP. ERIC SWALWELL (D) / CALIFORNIA 14TH

2 HOSPITALS

Hospital	City	FAH Member	Beds	Employees
Kindred Hospital San Francisco Bay Area	San Leandro	ScionHealth	99	323
Fremont Hospital	Fremont	UHS	148	603

REP. SAM T. LICCARDO (D) / CALIFORNIA 16TH

1 HOSPITAL

Hospital	City	FAH Member	Beds	Employees
Good Samaritan Hospital	San Jose	HCA Healthcare	474	2,253

BACK TO TOP



CALIFORNIA FAH MEMBER FACILITIES

REP. VINCE FONG (R) / CALIFORNIA 20TH

1 HOSPITAL

Hospital	City	FAH Member	Beds	Employees
Encompass Health Rehabilitation Hospital of Bakersfield	Bakersfield	Encompass Health	86	372

REP. JAY OBERNOLTE (R) / CALIFORNIA 23RD

2 HOSPITALS

Hospital	City	FAH Member	Beds	Employees
Desert Valley Hospital	Victorville	Prime Healthcare Services	148	701
Hi-Desert Medical Center	Joshua Tree	Tenet Healthcare	179	244

REP. RAUL RUIZ (D) / CALIFORNIA 25TH

1 HOSPITAL

Hospital	City	FAH Member	Beds	Employees
John F. Kennedy Memorial Hospital	Indio	Tenet Healthcare	145	584

REP. JULIA BROWNLEY (D) / CALIFORNIA 26TH

1 HOSPITAL

Hospital	City	FAH Member	Beds	Employees
Los Robles Hospital & Medical Center	Thousand Oaks	HCA Healthcare	386	1,617

REP. GEORGE T. WHITESIDES (D) / CALIFORNIA 27TH

1 HOSPITAL

Hospital	City	FAH Member	Beds	Employees
Palmdale Regional Medical Center	Palmdale	UHS	184	1,498

BACK TO TOP



CALIFORNIA FAH MEMBER FACILITIES

REP. JUDY CHU (D) / CALIFORNIA 28TH

1 HOSPITAL

Hospital	City	FAH Member	Beds	Employees
BHC Alhambra Hospital	Rosemead	UHS	115	504

REP. GIL CISNEROS (D) / CALIFORNIA 31ST

3 HOSPITALS

Hospital	City	FAH Member	Beds	Employees
San Dimas Community Hospital	San Dimas	Prime Healthcare Services	94	332
Kindred Hospital Baldwin Park	Baldwin Park	ScionHealth	95	324
Kindred Hospital San Gabriel Valley	West Covina	ScionHealth	76	254

REP. NORMA TORRES (D) / CALIFORNIA 35TH

4 HOSPITALS

Hospital	City	FAH Member	Beds	Employees
Chino Valley Medical Center	Chino	Prime Healthcare Services	112	503
Kindred Hospital Ontario	Ontario	ScionHealth	91	343
Kindred Hospital Rancho	Rancho Cucamonga	ScionHealth	55	348
Canyon Ridge Hospital	Chino	UHS	157	584

REP. TED LIEU (D) / CALIFORNIA 36TH

2 HOSPITALS

Hospital	City	FAH Member	Beds	Employees
Del Amo Behavioral Health System	Torrance	UHS	166	549
The Canyon at Santa Monica	Los Angeles	UHS		5

BACK TO TOP



CALIFORNIA FAH MEMBER FACILITIES

REP. SYDNEY K. KAMLAGER-DOVE (D) / CALIFORNIA 37TH

1 HOSPITAL

Hospital	City	FAH Member	Beds	Employees
Kindred Hospital Los Angeles	Los Angeles	ScionHealth	81	288

REP. MARK TAKANO (D) / CALIFORNIA 39TH

3 HOSPITALS

Hospital	City	FAH Member	Beds	Employees
Riverside Community Hospital	Riverside	HCA Healthcare	542	2,254
Kindred Hospital Riverside	Perris	ScionHealth	40	195
Riverside Medical Clinic Surgery Center	Riverside	UHS		997

REP. YOUNG KIM (R) / CALIFORNIA 40TH

1 HOSPITAL

Hospital	City	FAH Member	Beds	Employees
Encompass Health Rehabilitation Hospital of Tustin	Tustin	Encompass Health	65	345

REP. KEN CALVERT (R) / CALIFORNIA 41ST

7 HOSPITALS

Hospital	City	FAH Member	Beds	Employees
Desert Regional Medical Center	Palm Springs	Tenet Healthcare	385	2,218
A+ Urgent Care Centers	Lake Elsinore	UHS		40
A+ Urgent Care Centers	Menifee	UHS		
Corona Regional Medical Center	Corona	UHS	259	1,612
Michael's House	Palm Springs	UHS	60	100
Michael's House Outpatient	Palm Springs	UHS		
Southwest Healthcare Inland Valley Hospital	Wildomar	UHS	120	2,224

BACK TO TOP



CALIFORNIA FAH MEMBER FACILITIES

REP. MAXINE WATERS (D) / CALIFORNIA 43RD

2 HOSPITALS

Hospital	City	FAH Member	Beds	Employees
Centinela Hospital Medical Center	Inglewood	Prime Healthcare Services	336	1,065
Kindred Hospital South Bay	Gardena	ScionHealth	57	266

REP. NANETTE BARRAGAN (D) / CALIFORNIA 44TH

2 HOSPITALS

Hospital	City	FAH Member	Beds	Employees
St. Francis Medical Center	Lynwood	Prime Healthcare Services	354	1,659
Kindred Hospital Paramount	Paramount	ScionHealth	183	462

REP. DEREK TRAN (D) / CALIFORNIA 45TH

3 HOSPITALS

Hospital	City	FAH Member	Beds	Employees
Garden Grove Hospital Medical Center	Garden Grove	Prime Healthcare Services	167	316
Kindred Hospital Brea	Brea	ScionHealth	86	204
Kindred Hospital Westminster	Westminster	ScionHealth	109	396

REP. LOU CORREA (D) / CALIFORNIA 46TH

2 HOSPITALS

Hospital	City	FAH Member	Beds	Employees
West Anaheim Medical Center	Anaheim	Prime Healthcare Services	219	507
Kindred Hospital Santa Ana	Santa Ana	ScionHealth	54	187

BACK TO TOP



CALIFORNIA FAH MEMBER FACILITIES

REP. DARRELL ISSA (R) / CALIFORNIA 48TH

6 HOSPITALS

Hospital	City	FAH Member	Beds	Employees
Encompass Health Rehabilitation Hospital of Murrieta	Murrieta	Encompass Health	50	300
A+ Urgent Care Centers	Murrieta	UHS		
A+ Urgent Care Centers	Murrieta	UHS		
Southwest Healthcare Rancho Springs Hospital	Murrieta	UHS	120	803
Temecula Valley Day Surgery, affiliate of Southweest Healthcare	Murrieta	UHS		34
Temecula Valley Hospital	Temecula	UHS	140	1,702

REP. SCOTT H. PETERS (D) / CALIFORNIA 50TH

2 HOSPITALS

Hospital	City	FAH Member	Beds	Employees
Palomar Health Rehabilitation Institute	Escondido	Lifepoint Health	52	254
Kindred Hospital San Diego	San Diego	ScionHealth	70	255

REP. SARA JACOBS (D) / CALIFORNIA 51ST

1 HOSPITAL

Hospital	City	FAH Member	Beds	Employees
Thousand Branches Wellness Mission Valley	San Diego	UHS		

REP. JUAN VARGAS (D) / CALIFORNIA 52ND

1 HOSPITAL

Hospital	City	FAH Member	Beds	Employees
Paradise Valley Hospital	National City	Prime Healthcare Services	291	903

BACK TO TOP