



ARKANSAS

FAH MEMBER FACILITIES

SENATE

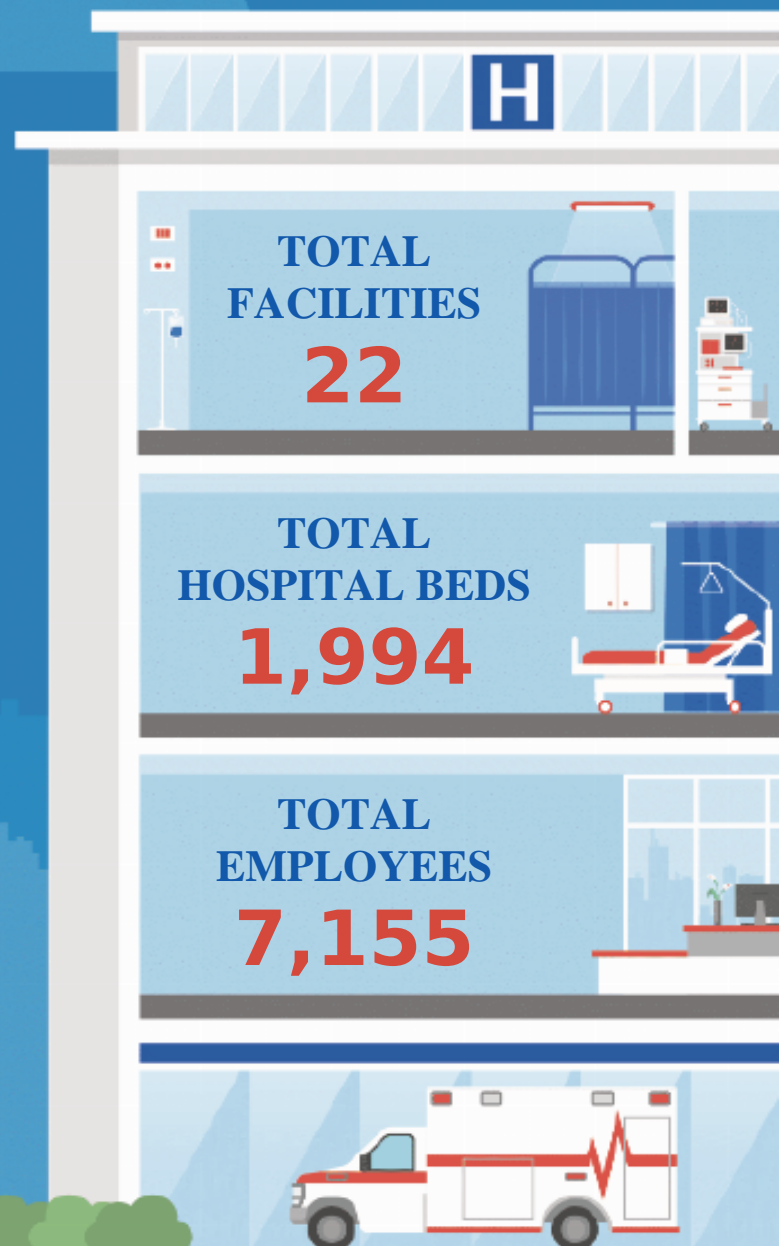
Sen. John Boozman (R)
Sen. Tom Cotton (R)

HOUSE *(Click name to view the district)*

Rep. Rick Crawford (R) / Arkansas 1st
Rep. French Hill (R) / Arkansas 2nd
Rep. Steve Womack (R) / Arkansas 3rd
Rep. Bruce Westerman (R) / Arkansas 4th



Federation of American Hospitals represents America's tax-paying community hospitals and health systems.





ARKANSAS FAH MEMBER FACILITIES

REP. RICK CRAWFORD (R) / ARKANSAS 1ST

1 HOSPITAL

Hospital	City	FAH Member	Beds	Employees
Encompass Health Rehabilitation Hospital of Jonesboro	Jonesboro	Encompass Health	90	334

REP. FRENCH HILL (R) / ARKANSAS 2ND

7 HOSPITALS

Hospital	City	FAH Member	Beds	Employees
CHI St. Vincent Sherwood Rehabilitation Hospital, a partner of Encompass Health	Sherwood	Encompass Health	83	320
Saline Memorial Hospital	Benton	Lifepoint Health	177	1,021
Cornerstone Specialty Hospitals Little Rock	Little Rock	ScionHealth	40	61
Pinnacle Pointe Behavioral Healthcare System	Little Rock	UHS	127	284
Rivendell Behavioral Health Services of Arkansas	Benton	UHS	80	261
The Bridgeway	Little Rock	UHS	127	321
The Pointe Outpatient Behavioral Health Services	Conway	UHS		

BACK TO TOP



ARKANSAS FAH MEMBER FACILITIES

REP. STEVE WOMACK (R) / ARKANSAS 3RD

9 HOSPITALS

Hospital	City	FAH Member	Beds	Employees
Northwest Medical Center - Bentonville	Bentonville	Community Health Systems	128	478
Northwest Medical Center - Springdale	Springdale	Community Health Systems	222	733
Siloam Springs Regional Hospital	Siloam Springs	Community Health Systems	73	212
Willow Creek Women's Hospital	Springdale	Community Health Systems	64	244
Encompass Health Rehabilitation Hospital of Fort Smith	Fort Smith	Encompass Health	80	231
Encompass Health Rehabilitation Hospital, a partner of Washington Regional	Fayetteville	Encompass Health	80	313
Mercy Rehabilitation Hospital Northwest Arkansas	Rogers	Lifepoint Health	36	149
Mercy Rehabilitation Hospital OKC	Fort Smith	Lifepoint Health	50	45
Springwoods Behavioral Health	Fayetteville	UHS	80	242

REP. BRUCE WESTERMAN (R) / ARKANSAS 4TH

5 HOSPITALS

Hospital	City	FAH Member	Beds	Employees
CHI St. Vincent Hot Springs Rehabilitation Hospital, a partner of Encompass Health	Hot Springs	Encompass Health	48	206
Jefferson Rehab and BH	White Hall	Lifepoint Health	36	51
Jefferson Regional Medical Center	Pine Bluff	Lifepoint Health	40	192
National Park Medical Center	Hot Springs National Park	Lifepoint Health	163	722
Saint Mary's Regional Medical Center	Russellville	Lifepoint Health	170	735

BACK TO TOP