



# ALABAMA

## FAH MEMBER FACILITIES

### SENATE

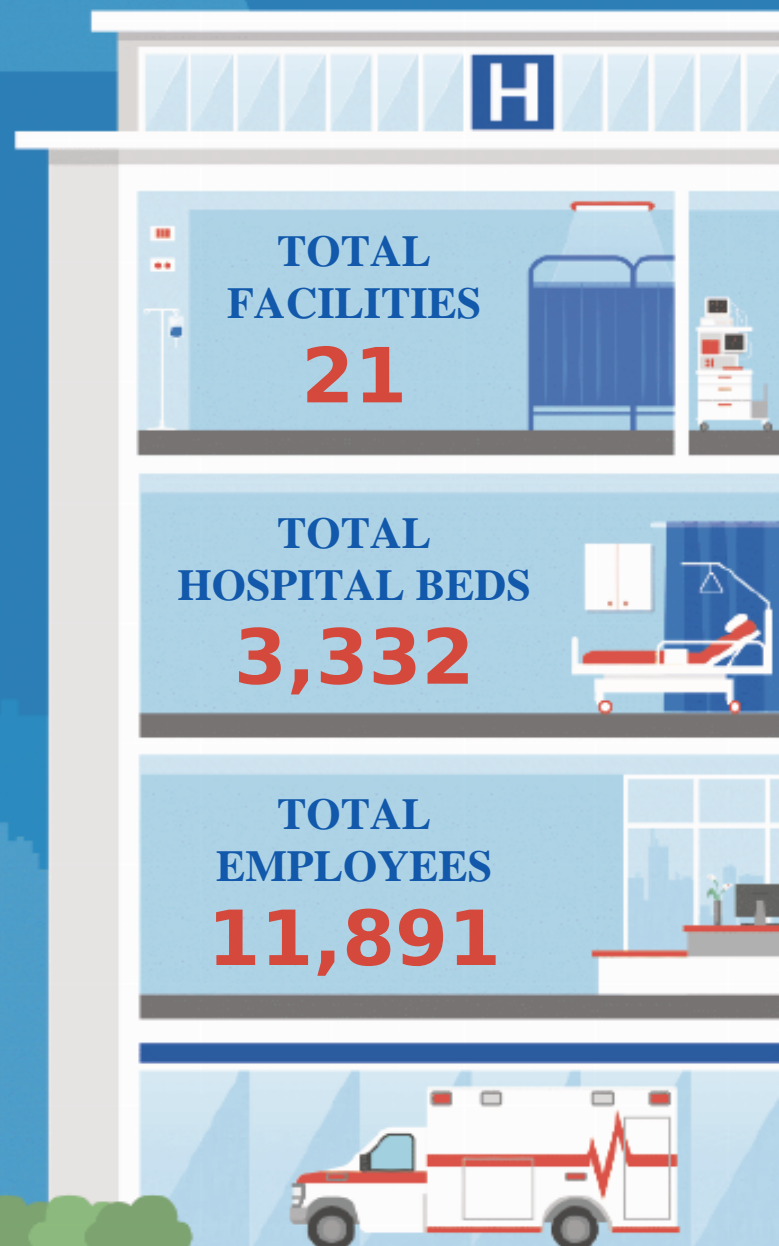
Sen. Tommy Tuberville (R)  
Sen. Katie Britt (R)

### HOUSE *(Click name to view the district)*

Rep. Barry Moore (R) / Alabama 1st  
Rep. Shomari Figures (D) / Alabama 2nd  
Rep. Mike Rogers (R) / Alabama 3rd  
Rep. Robert B. Aderholt (R) / Alabama 4th  
Rep. Dale W. Strong (R) / Alabama 5th  
Rep. Gary Palmer (R) / Alabama 6th  
Rep. Terri Sewell (D) / Alabama 7th



Federation of American Hospitals represents America's tax-paying community hospitals and health systems.





# ALABAMA FAH MEMBER FACILITIES

## REP. BARRY MOORE (R) / ALABAMA 1ST

### 1 HOSPITAL

Hospital	City	FAH Member	Beds	Employees
South Baldwin Regional Medical Center	Foley	Community Health Systems	112	739

## REP. SHOMARI FIGURES (D) / ALABAMA 2ND

### 5 HOSPITALS

Hospital	City	FAH Member	Beds	Employees
Andalusia Health	Andalusia	ScionHealth	88	187
Laurel Oaks Behavioral Health Center	Dothan	Universal Health Services, Inc.	118	193
Flowers Hospital	Dothan	Community Health Systems	235	1,269
Medical Center Enterprise	Enterprise	Community Health Systems	131	405
Encompass Health Rehabilitation Hospital of Dothan	Dothan	Encompass	56	235

## REP. MIKE ROGERS (R) / ALABAMA 3RD

### 1 HOSPITAL

Hospital	City	FAH Member	Beds	Employees
Rehabilitation Hospital of Phenix City	Phenix City	Encompass	58	239

BACK TO TOP



# ALABAMA FAH MEMBER FACILITIES

## REP. ROBERT B. ADERHOLT (R) / ALABAMA 4TH

### 5 HOSPITALS

Hospital	City	FAH Member	Beds	Employees
Gadsden Regional Medical Center	Gadsden	Community Health Systems	346	1,273
Encompass Health Rehabilitation Hospital of Gadsden	Gadsden	Encompass	49	202
North Alabama Medical Center	Florence	Lifepoint Health	358	1,300
North Alabama Shoals Hospital	Muscle Shoals	Lifepoint Health	178	387
Riverview Regional Medical Center	Gadsden	Prime Healthcare Services	281	549

## REP. DALE W. STRONG (R) / ALABAMA 5TH

### 2 HOSPITALS

Hospital	City	FAH Member	Beds	Employees
Crestwood Medical Center	Huntsville	Community Health Systems	180	1,183
Encompass Health Rehabilitation Hospital of North Alabama	Huntsville	Encompass	85	364

## REP. GARY PALMER (R) / ALABAMA 6TH

### 3 HOSPITALS

Hospital	City	FAH Member	Beds	Employees
Alabama Clinical Schools	Birmingham	Universal Health Services, Inc.	80	141
Grandview Medical Center	Birmingham	Community Health Systems	372	1,760
Encompass Health Rehabilitation Hospital of Shelby County	Pelham	Encompass	34	149

BACK TO TOP



# ALABAMA FAH MEMBER FACILITIES

## REP. TERRI SEWELL (D) / ALABAMA 7TH

### 4 HOSPITALS

Hospital	City	FAH Member	Beds	Employees
Vaughan Regional Medical Center-Parkway Campus	Selma	ScionHealth	175	273
Hill Crest Behavioral Health Services	Birmingham	Universal Health Services, Inc.	221	308
Encompass Health Lakeshore Rehabilitation Hospital	Birmingham	Encompass	100	441
Encompass Health Rehabilitation Hospital of Montgomery	Montgomery	Encompass	75	294

^  
BACK  
TO TOP