



RHODE ISLAND

FAH MEMBER FACILITIES

SENATE

Sen. Jack Reed (D)

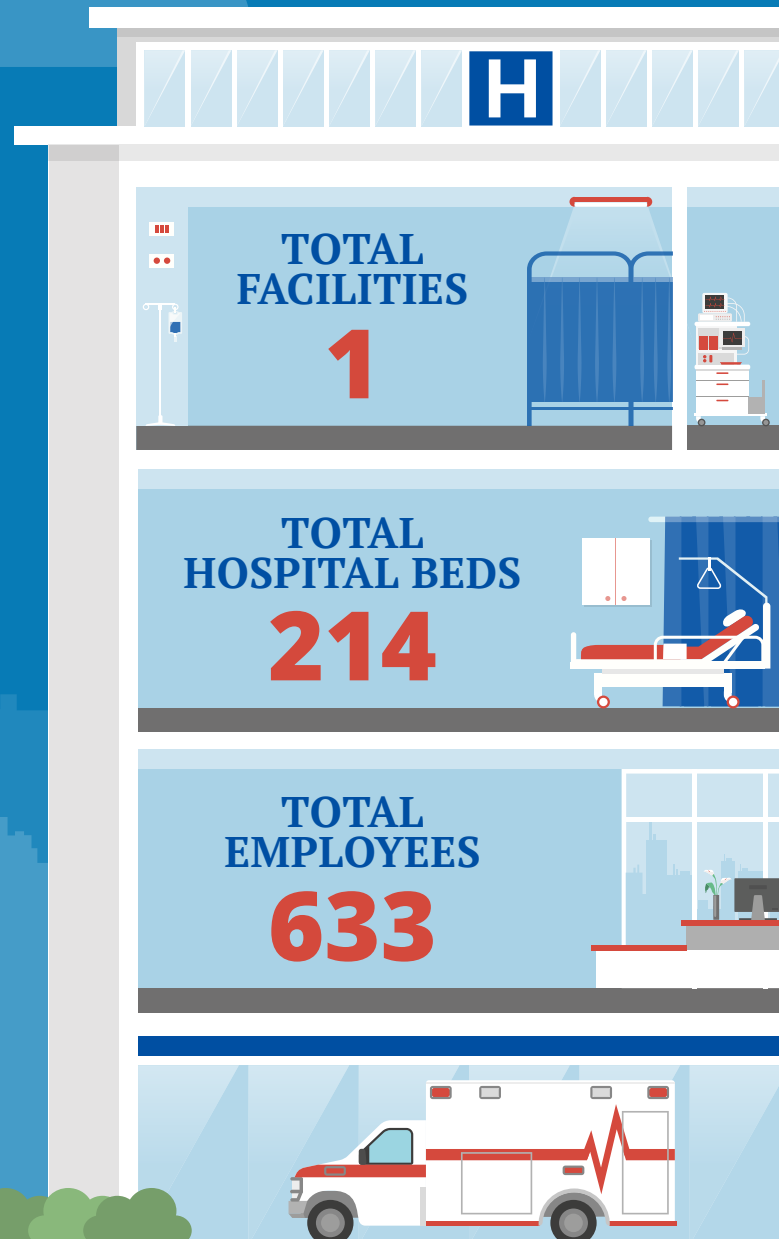
Sen. Sheldon Whitehouse (D)

HOUSE *(Click name to view the district)*

Rep. David Cicilline (D) / Rhode Island 1st



Federation of American Hospitals represents America's tax-paying community hospitals and health systems.





RHODE ISLAND FAH MEMBER FACILITIES

			Beds	Employees
REP. DAVID CICILLINE (D) / RHODE ISLAND 1ST				
1 HOSPITAL				
Landmark Medical Center	Woonsocket	Prime Healthcare Services	214	633

^
BACK
TO TOP