



DISTRICT OF COLUMBIA

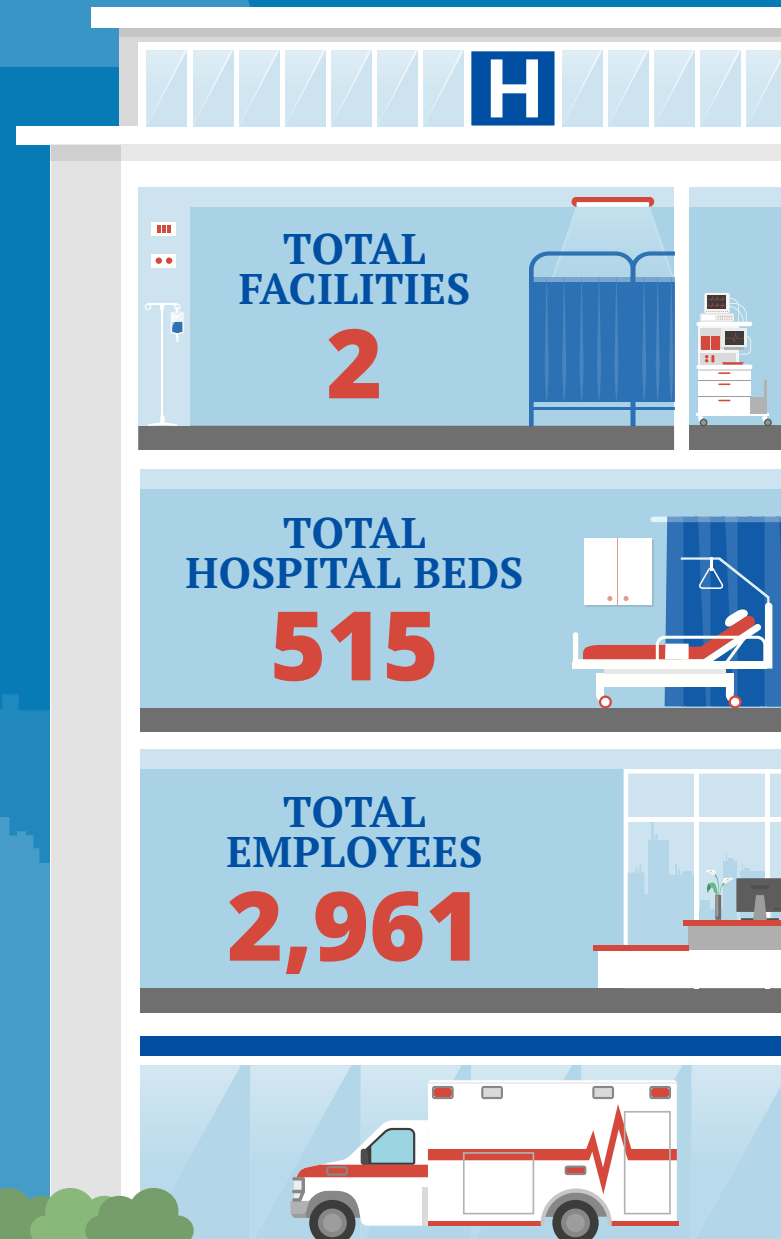
FAH MEMBER FACILITIES

HOUSE *(Click name to view the district)*

Del. Eleanor Holmes Norton (D) /
District of Columbia At-Large



Federation of American
Hospitals represents
America's tax-paying
community hospitals and
health systems.





			Beds	Employees
DEL. ELEANOR HOLMES NORTON (D) / DISTRICT OF COLUMBIA AT-LARGE				
2 HOSPITALS				
George Washington University Hospital	Washington	Universal Health Services	385	2,678
Psychiatric Institute Of Washington	Washington	Universal Health Services	130	283

^
BACK
TO TOP