



NEW MEXICO

FAH MEMBER FACILITIES

SENATE

Sen. Martin Heinrich (D)

Sen. Ben Ray Luján (D)

HOUSE *(Click name to view the district)*

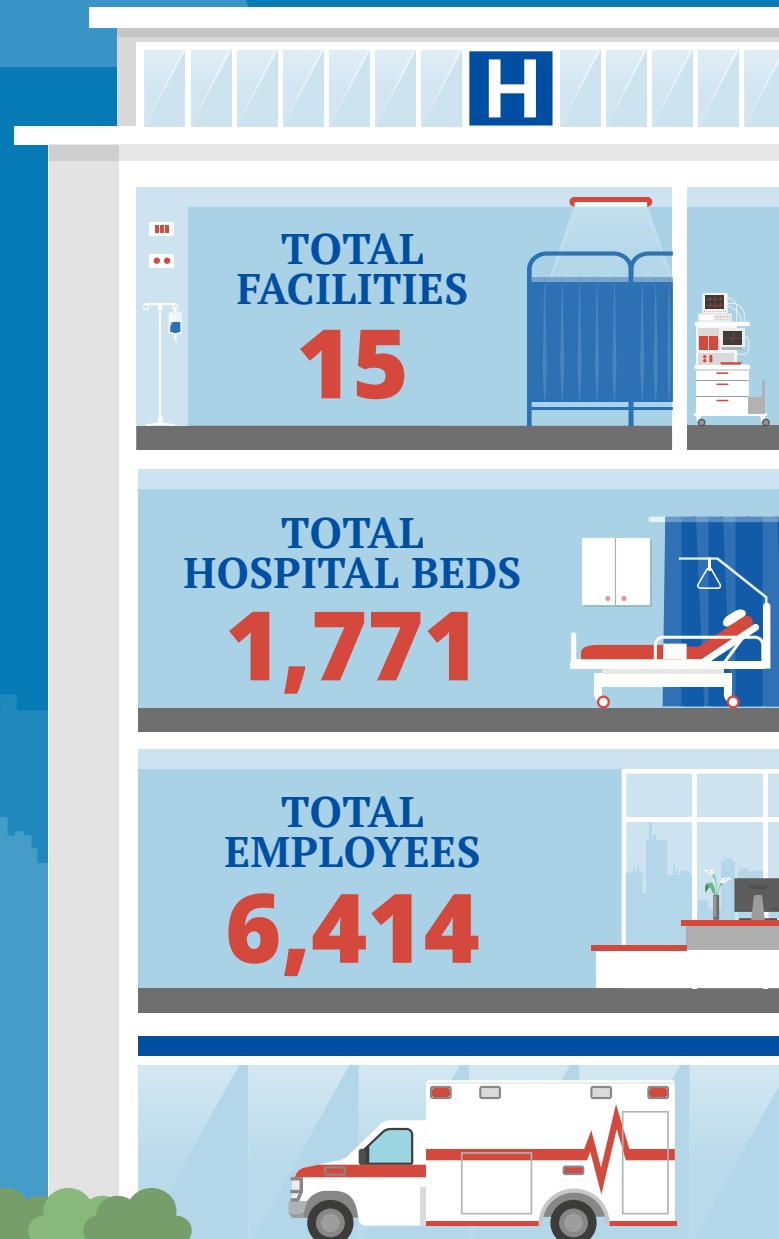
Rep. Melanie Stansbury (D) / New Mexico 1st

Rep. Yvette Herrell (R) / New Mexico 2nd

Rep. Teresa Leger Fernandez (D) / New Mexico 3rd



Federation of American Hospitals represents America's tax-paying community hospitals and health systems.



NEW MEXICO FAH MEMBER FACILITIES

| | | | Beds | Employees |
|--|-------------|---------------------------------|------|-----------|
| REP. MELANIE STANSBURY (D) / NEW MEXICO 1ST | | | | |
| 7 HOSPITALS | | | | |
| Encompass Health Rehabilitation Hospital of Albuquerque | Albuquerque | Encompass Health | 87 | 271 |
| Heart Hospital of NM at Lovelace Medical Center | Albuquerque | Ardent Health Services | 55 | |
| Kindred Hospital Albuquerque | Albuquerque | Kindred Healthcare | 61 | 194 |
| Lovelace Medical Center | Albuquerque | Ardent Health Services | 263 | 979 |
| Lovelace Rehabilitation Hospital | Albuquerque | Ardent Health Services | 62 | 170 |
| Lovelace Westside Hospital | Albuquerque | Ardent Health Services | 84 | 247 |
| Lovelace Women's Hospital | Albuquerque | Ardent Health Services | 120 | 583 |
| REP. YVETTE HERRELL (R) / NEW MEXICO 2ND | | | | |
| 7 HOSPITALS | | | | |
| Carlsbad Medical Center | Carlsbad | Community Health Systems | 115 | 327 |
| Eastern New Mexico Medical Center | Roswell | Community Health Systems | 162 | 439 |
| Lea Regional Medical Center and Community Health Systems, Inc. | Hobbs | Community Health Systems | 201 | 313 |
| Lovelace Regional Hospital - Roswell | Roswell | Ardent Health Services | 27 | 180 |
| Memorial Medical Center of Las Cruces | Las Cruces | LifePoint Health | 199 | 1259 |
| Mesilla Valley Hospital | Las Cruces | Universal Health Services, Inc. | 120 | 270 |
| MountainView Regional Medical Center | Las Cruces | Community Health Systems | 168 | 911 |
| REP. TERESA LEGER FERNANDEZ (D) / NEW MEXICO 3RD | | | | |
| 1 HOSPITAL | | | | |
| Los Alamos Medical Center | Los Alamos | LifePoint Health | 47 | 271 |

^
BACK
TO TOP