



MONTANA

FAH MEMBER FACILITIES



Federation of American Hospitals represents America's tax-paying community hospitals and health systems.

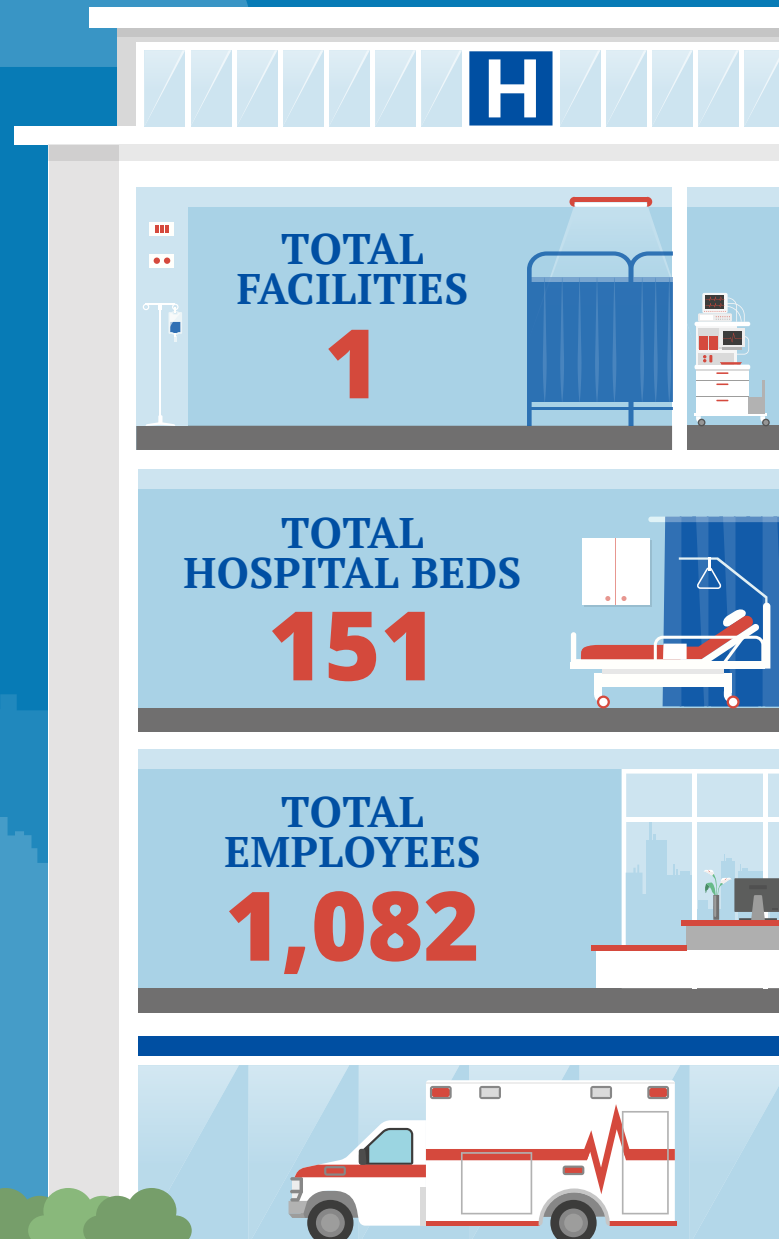
SENATE

Sen. Steve Daines (R)

Sen. Jon Tester (D)

HOUSE *(Click name to view the district)*

Rep. Matt Rosendale (R) / Montana At-Large





MONTANA FAH MEMBER FACILITIES

REP. MATT ROSENDALE (R) / MONTANA AT-LARGE
1 HOSPITAL

			Beds	Employees
Community Medical Center	Missoula	LifePoint Health	151	1,082

^
BACK
TO TOP