



WASHINGTON

FAH MEMBER FACILITIES

SENATE

Sen. Maria Cantwell (D)

Sen. Patty Murray (D)

HOUSE *(Click name to view the district)*

Rep. Suzan DelBene (D)/ Washington 1st

Rep. Rick Larsen (D)/ Washington 2nd

Rep. Dan Newhouse (R)/ Washington 4th

Rep. Cathy McMorris Rodgers (R)/
Washington 5th

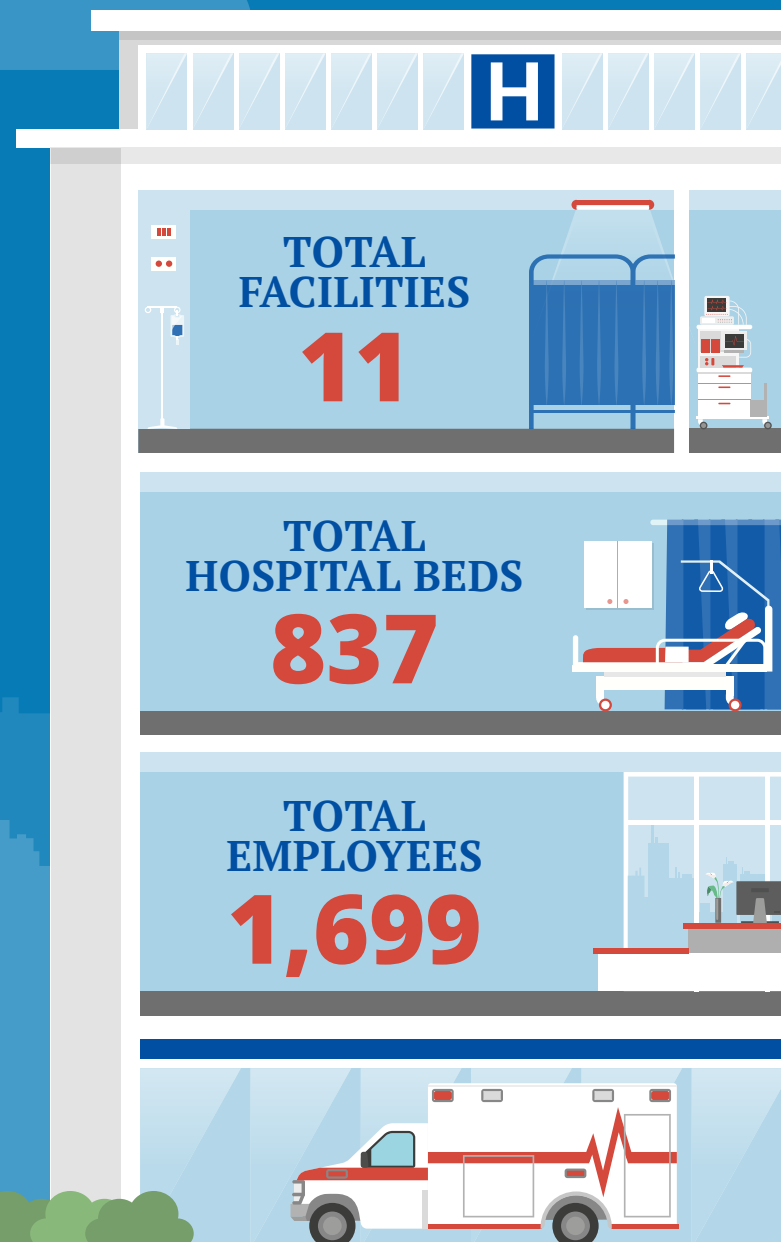
Rep. Derek Kilmer (D) / Washington 6th

Rep. Pramila Jayapal (D)/ Washington 7th

Rep. Denny Heck (D)/ Washington 10th



Federation of American Hospitals represents America's investor-owned community hospitals and health systems.





WASHINGTON FAH MEMBER FACILITIES

			Beds	Employees
REP. SUZAN DELBENE (D)/ WASHINGTON 1ST				
2 HOSPITALS				
Fairfax Hospital	Kirkland	Universal Health Services, Inc.	157	561
Fairfax Hospital - Monroe	Monroe	Universal Health Services, Inc.	34	
REP. RICK LARSEN (D)/ WASHINGTON 2ND				
1 HOSPITAL				
Fairfax Hospital - Everett	Everett	Universal Health Services, Inc.	30	
REP. DAN NEWHOUSE (R)/ WASHINGTON 4TH				
2 HOSPITALS				
Lourdes Health	Pasco	LifePoint Health	95	
Trios Health	Kennewick	LifePoint Health	111	
REP. CATHY MCMORRIS RODGERS (R)/ WASHINGTON 5TH				
1 HOSPITAL				
Inland Northwest Behavioral Health	Spokane	Universal Health Services, Inc.	100	80
REP. DEREK KILMER (D) / WASHINGTON 6TH				
1 HOSPITAL				
CHI Franciscan Rehabilitation Hospital	Tacoma	Kindred Healthcare	60	0
REP. PRAMILA JAYAPAL (D)/ WASHINGTON 7TH				
3 HOSPITALS				
Kindred Hospital Seattle - First Hill	Seattle	Kindred Healthcare	50	196
Kindred Hospital Seattle - Northgate	Seattle	Kindred Healthcare	30	165
Schick Shadel Hospital	Seattle	Universal Health Services, Inc.	60	92

^
BACK
TO TOP



WASHINGTON FAH MEMBER FACILITIES

REP. DENNY HECK (D)/ WASHINGTON 10TH DISTRICT 1 HOSPITAL

			Beds	Employees
Capital Medical Center	Olympia	LifePoint Health	110	605

^
BACK
TO TOP