



# VIRGINIA

## FAH MEMBER FACILITIES

### SENATE

Sen. Tim Kaine (D)

Sen. Mark R. Warner (D)

### HOUSE *(Click name to view the district)*

Rep. Rob Wittman (R)/ Virginia 1st

Rep. Elaine Luria (D)/ Virginia 2nd

Rep. Bobby Scott (D)/ Virginia 3rd

Rep. Donald McEachin (D)/ Virginia 4th

Rep. Denver Riggleman (R)/ Virginia 5th

Rep. Ben Cline (R)/ Virginia 6th

Rep. Abigail Spanberger (D)/ Virginia 7th

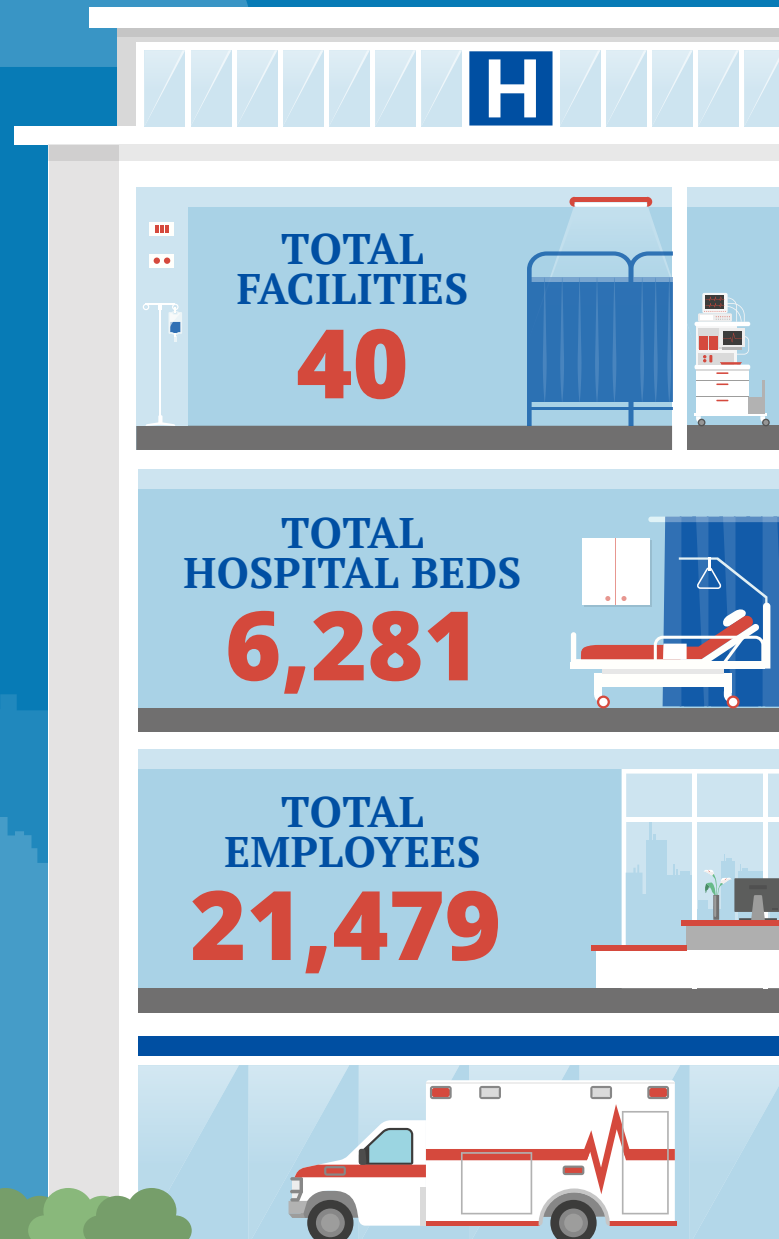
Rep. Morgan Griffith (R)/ Virginia 9th

Rep. Jennifer Wexton (D)/ Virginia 10th

Rep. Gerald Connolly (D)/ Virginia 11th



Federation of American Hospitals represents America's investor-owned community hospitals and health systems.





# VIRGINIA FAH MEMBER FACILITIES

			Beds	Employees
<b>REP. ROB WITTMAN (R)/ VIRGINIA 1ST</b>				
<b>4 HOSPITALS</b>				
Cumberland Hospital	New Kent	Universal Health Services	118	245
Encompass Health Rehabilitation Hospital of Fredericksburg	Fredericksburg	Encompass Health	52	209
Hanover Emergency Center	Mechanicsville	HCA Healthcare		
Spotsylvania Regional Medical Center	Fredericksburg	HCA Healthcare	137	619
<b>REP. ELAINE LURIA (D)/ VIRGINIA 2ND</b>				
<b>1 HOSPITAL</b>				
Virginia Beach Psychiatric Center	Virginia Beach	Universal Health Services, Inc.	100	226
<b>REP. BOBBY SCOTT (D)/ VIRGINIA 3RD</b>				
<b>5 HOSPITALS</b>				
First Home Care (Oyster Point Academy Private Day School)	Portsmouth	Universal Health Services, Inc.		196
Harbor Point Behavioral Health Center	Portsmouth	Universal Health Services, Inc.	186	268
Kempsville Center for Behavioral Health	Norfolk	Universal Health Services, Inc.	82	175
Newport News Behavioral Health Center	Newport News	Universal Health Services, Inc.	132	205
Southampton Memorial Hospital	Franklin	Community Health Systems	221	404
<b>REP. A. DONALD MCEACHIN (D)/ VIRGINIA 4TH</b>				
<b>7 HOSPITALS</b>				
CJW Medical Center - Chippenham Campus	Richmond	HCA Healthcare	758	3,369
Encompass Health Rehabilitation Hospital of Petersburg	Petersburg	Encompass Health	64	166
John Randolph Medical Center	Hopewell	HCA Healthcare	147	559
Poplar Springs Hospital	Petersburg	Universal Health Services, Inc.	208	388
Retreat Doctors' Hospital	Richmond	HCA Healthcare		
Southern Virginia Regional Medical Center	Emporia	Community Health Systems	80	225
Southside Regional Medical Center	Petersburg	Community Health Systems	300	1,366

^  
BACK  
TO TOP



			Beds	Employees
<b>REP. DENVER RIGGLEMAN (R)/ VIRGINIA 5TH</b>				
<b>4 HOSPITALS</b>				
Fauquier Hospital	Warrenton	LifePoint Health	210	1,151
Sovah Health - Danville	Danville	LifePoint Health	250	1,318
The Hughes Center	Danville	Universal Health Services, Inc.	56	149
UVA - Encompass Health Rehabilitation Hospital	Charlottesville	Encompass Health	50	283
<b>REP. BEN CLINE (R)/ VIRGINIA 6TH</b>				
<b>1 HOSPITAL</b>				
Liberty Point Behavioral Health	Staunton	Universal Health Services, Inc.	56	115
<b>REP. ABIGAIL SPANBERGER (D)/ VIRGINIA 7TH</b>				
<b>4 HOSPITALS</b>				
CJW Medical Center - Johnston Willis Campus	Richmond	HCA Healthcare		
Encompass Health Rehabilitation Hospital of Richmond	Richmond	Encompass Health	40	157
Henrico Doctors' Hospital (Forest Campus)	Richmond	HCA Healthcare	767	2579
Parham Doctors' Hospital	Richmond	HCA Healthcare		
<b>REP. MORGAN GRIFFITH (R)/ VIRGINIA 9TH</b>				
<b>9 HOSPITALS</b>				
Clinch Valley Medical Center	Richlands	LifePoint Health	175	683
Lewisgale Hospital Alleghany	Low Moor	HCA Healthcare	205	224
Lewisgale Hospital Montgomery	Blacksburg	HCA Healthcare	146	445
Lewisgale Hospital Pulaski	Pulaski	HCA Healthcare	147	246
Lewisgale Medical Center	Salem	HCA Healthcare	506	1,442
Sovah Health - Martinsville	Martinsville	LifePoint Health	220	865
The Rehabilitation Hospital of Southwest Virginia	Bristol	Encompass Health	25	116
Twin County Regional Healthcare	Galax	LifePoint Health	141	536
Wythe County Community Hospital	Wytheville	LifePoint Health	100	404

^  
BACK  
TO TOP



			Beds	Employees
<b>REP. JENNIFER WEXTON (D)/ VIRGINIA 10TH</b>				
<b>3 HOSPITALS</b>				
Encompass Health Rehabilitation Hospital of Northern Virginia	Aldie	Encompass Health	60	219
North Spring Behavioral Center	Leesburg	Universal Health Services, Inc.	103	205
Stonesprings Hospital Center	Dulles	HCA Healthcare	124	274
<b>REP. GERALD CONNOLLY (D)/ VIRGINIA 11TH</b>				
<b>2 HOSPITALS</b>				
Dominion Hospital	Falls Church	HCA Healthcare	116	293
Reston Hospital Center	Reston	HCA Healthcare	199	1,155

^  
BACK  
TO TOP