



# TEXAS

## FAH MEMBER FACILITIES

### SENATE

Sen. John Cornyn (R)

Sen. Ted Cruz (R)

### HOUSE *(Click name to view the district)*

Rep. Louie Gohmert (R)/ Texas 1st

Rep. Daniel Crenshaw (R)/ Texas 2nd

Rep. Van Taylor (R)/ Texas 3rd

Rep. John Ratcliffe (R)/ Texas 4th

Rep. Lance Gooden (R)/ Texas 5th

Rep. Ronald Wright (R)/ Texas 6th

Rep. Elizabeth Fletcher (D)/ Texas 7th

Rep. Kevin Brady (R)/ Texas 8th

Rep. Al Green (D)/ Texas 9th

Rep. Michael McCaul (R)/ Texas 10th

Rep. Mike Conaway (R)/ Texas 11th

Rep. Kay Granger (R)/ Texas 12th

Rep. Mac Thornberry (R)/ Texas 13th

Rep. Randy Weber (R)/ Texas 14th

Rep. Vicente Gonzalez (D)/ Texas 15th

Rep. Veronica Escobar (D)/ Texas 16th

Rep. Bill Flores (R)/ Texas 17th

Rep. Sheila Jackson Lee (D)/ Texas 18th

Rep. Jodey Arrington (R)/ Texas 19th

Rep. Joaquin Castro (D)/ Texas 20th

Rep. Chip Roy (R)/ Texas 21st

Rep. Pete Olson (R)/ Texas 22nd

Rep. Will Hurd (R)/ Texas 23rd

Rep. Kenny Marchant (R)/ Texas 24th

Rep. Roger Williams (R)/ Texas 25th

Rep. Michael Burgess (R)/ Texas 26th

Rep. Michael Cloud (R)/ Texas 27th

Rep. Henry Cuellar (D)/ Texas 28th

Rep. Eddie Bernice Johnson (D)/ Texas 30th

Rep. John Carter (R)/ Texas 31st

Rep. Colin Allred (D)/ Texas 32nd

Rep. Marc Veasey (D)/ Texas 33rd

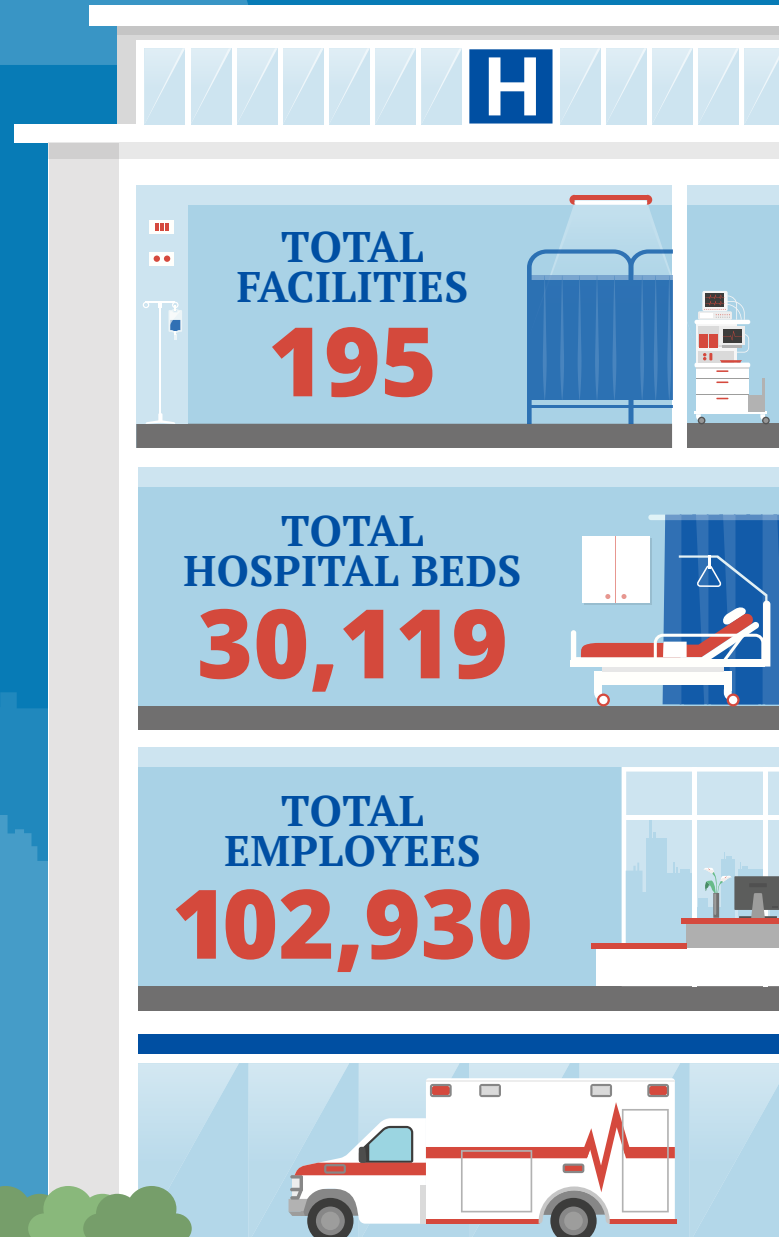
Rep. Filemon Vela (D)/ Texas 34th

Rep. Lloyd Doggett (D)/ Texas 35th

Rep. Brian Babin (R)/ Texas 36th



Federation of American Hospitals represents America's investor-owned community hospitals and health systems.





# TEXAS FAH MEMBER FACILITIES

			Beds	Employees
<b>REP. LOUIE GOHMERT (R)/ TEXAS 1ST</b>				
<b>10 HOSPITALS</b>				
Christus Trinity Mother Frances Rehabilitation Hospital	Tyler	Encompass Health	74	230
Longview Regional Medical Center	Longview	Community Health Systems	230	986
Nacogdoches Medical Center	Nacogdoches	Tenet Healthcare Corporation	153	429
UT Health Carthage	Carthage	Ardent Health Services	42	117
UT Health Henderson	Henderson	Ardent Health Services	96	173
UT Health North Campus Tyler	Tyler	Ardent Health Services	130	1,487
UT Health Rehabilitation Hospital	Tyler	Ardent Health Services	49	313
UT Health Specialty Hospital	Tyler	Ardent Health Services	36	94
UT Health Tyler	Tyler	Ardent Health Services	502	2,384
Woodland Heights Medical Center	Lufkin	Community Health Systems	149	563
<b>REP. DANIEL CRENSHAW (R)/ TEXAS 2ND</b>				
<b>2 HOSPITALS</b>				
Encompass Health Rehabilitation Hospital The Vintage	Houston	Encompass Health	60	141
Kingwood Pines Hospital	Kingwood	Universal Health Services, Inc.	116	252
<b>REP. VAN TAYLOR (R)/ TEXAS 3RD</b>				
<b>5 HOSPITALS</b>				
Encompass Health Rehabilitation Hospital of Plano	Plano	Encompass Health	83	274
Encompass Health Rehabilitation Hospital of Richardson	Richardson	Encompass Health	50	186
Medical City Frisco	Frisco	HCA Healthcare	54	270
Medical City McKinney	McKinney	HCA Healthcare	260	1,010
Medical City Plano	Plano	HCA Healthcare	513	2,171

^  
BACK  
TO TOP



# TEXAS FAH MEMBER FACILITIES

			Beds	Employees
<b>REP. JOHN RATCLIFFE (R)/ TEXAS 4TH</b>				
<b>6 HOSPITALS</b>				
Encompass Health Rehabilitation Hospital of Texarkana	Texarkana	Encompass Health	60	218
Glen Oaks Hospital	Greenville	Universal Health Services, Inc.	54	135
Paris Regional Medical Center	Paris	LifePoint Health	356	1,035
Texoma Medical Center	Denison	Universal Health Services, Inc.	326	2,008
TMC Behavioral Health Center	Sherman	Universal Health Services, Inc.	60	
UT Health Pittsburg	Pittsburg	Ardent Health Services	25	188
<b>REP. LANCE GOODEN (R)/ TEXAS 5TH</b>				
<b>5 HOSPITALS</b>				
Dallas Regional Medical Center	Mesquite	Prime Healthcare Services	172	488
Palestine Regional Medical Center	Palestine	LifePoint Health	156	535
UT Health Athens	Athens	Ardent Health Services	127	467
UT Health Jacksonville	Jacksonville	Ardent Health Services	72	220
UT Health Quitman	Quitman	Ardent Health Services	25	181
<b>REP. RONALD WRIGHT (R)/ TEXAS 6TH</b>				
<b>7 HOSPITALS</b>				
Encompass Health Rehabilitation Hospital of Arlington	Arlington	Encompass Health	85	270
Ennis Regional Medical Center	Ennis	LifePoint Health	60	155
Kindred Hospital Mansfield	Mansfield	Kindred Healthcare	55	121
Kindred Hospital Tarrant County (Arlington Campus)	Arlington	Kindred Healthcare	68	172
Medical City Arlington	Arlington	HCA Healthcare	420	1,460
Navarro Regional Hospital	Corsicana	Community Health Systems	162	252
Texas Rehabilitation Hospital of Arlington	Arlington	Kindred Healthcare	40	170

BACK TO TOP



# TEXAS FAH MEMBER FACILITIES

			Beds	Employees
<b>REP. ELIZABETH FLETCHER (D)/ TEXAS 7TH</b>				
<b>6 HOSPITALS</b>				
Behavioral Hospital Of Bellaire	Houston	Universal Health Services, Inc.	248	236
Encompass Health Rehabilitation Hospital of Cypress	Houston	Encompass Health	60	239
HCA Houston Healthcare Cypress Fairbanks (FSED)	Houston	HCA Healthcare	181	742
HCA Houston Healthcare North Cypress	Cypress	HCA Healthcare	163	1,300
Kindred Hospital Houston NW	Houston	Kindred Healthcare	84	170
West Oaks Hospital	Houston	Universal Health Services, Inc.	160	345
<b>REP. KEVIN BRADY (R)/ TEXAS 8TH</b>				
<b>4 HOSPITALS</b>				
Conroe Regional Medical Center	Conroe	HCA Healthcare	328	1,179
Encompass Health Rehabilitation Hospital The Woodlands	Conroe	Encompass Health	84	196
Encompass Health Rehabilitation Hospital Vision Park	Shenandoah	Encompass Health	60	157
Kingwood Medical Center	Kingwood	HCA Healthcare	411	1,500
<b>REP. AL GREEN (D)/ TEXAS 9TH</b>				
<b>5 HOSPITALS</b>				
Kindred Hospital Houston Medical Center	Houston	Kindred Healthcare	110	359
Park Plaza Hospital	Houston	HCA Healthcare	444	480
Texas Orthopedic Hospital	Houston	HCA Healthcare	49	449
West Houston Medical Center	Houston	HCA Healthcare	302	1,148
Woman's Hospital of Texas	Houston	HCA Healthcare	419	1,410

^  
BACK  
TO TOP



# TEXAS FAH MEMBER FACILITIES

			Beds	Employees
<b>REP. MICHAEL MCCAUL (R)/ TEXAS 10TH</b>				
<b>4 HOSPITALS</b>				
Central Texas Rehabilitation Hospital	Austin	Kindred Healthcare	50	197
Heart Hospital of Austin	Austin	HCA Healthcare	58	371
Kindred Hospital Tomball	Tomball	Kindred Healthcare	75	169
Tomball Regional Medical Center	Tomball	HCA Healthcare	350	872
<b>REP. MIKE CONAWAY (R)/ TEXAS 11TH</b>				
<b>5 HOSPITALS</b>				
Brownwood Regional Medical Center	Brownwood	Community Health Systems	188	405
Encompass Health Rehabilitation Hospital of Midland/Odessa	Midland	Encompass Health	60	225
Lake Granbury Medical Center	Granbury	Community Health Systems	73	377
River Crest Hospital	San Angelo	Universal Health Services, Inc.	80	157
San Angelo Community Medical Center	San Angelo	Community Health Systems	171	592
<b>REP. KAY GRANGER (R)/ TEXAS 12TH</b>				
<b>9 HOSPITALS</b>				
Encompass Health Rehabilitation Hospital of City View	Fort Worth	Encompass Health	62	202
Encompass Health Rehabilitation Hospital of Fort Worth	Fort Worth	Encompass Health	60	188
Kindred Hospital Fort Worth	Fort Worth	Kindred Healthcare	67	161
Kindred Hospital Tarrant County (Fort Worth Southwest Campus)	Fort Worth	Kindred Healthcare	92	281
Medical City Alliance	Fort Worth	HCA Healthcare	75	446
Medical City Fort Worth	Fort Worth	HCA Healthcare	320	1,142
Medical City North Hills	North Richland Hills	HCA Healthcare	164	706
Medical City Weatherford	Weatherford	HCA Healthcare	103	421
Texas Rehabilitation Hospital of Fort Worth	Fort Worth	Kindred Healthcare	66	292

BACK TO TOP



# TEXAS FAH MEMBER FACILITIES

			Beds	Employees
<b>REP. MAC THORBERRY (R)/ TEXAS 13TH</b>				
<b>8 HOSPITALS</b>				
BSA Hospital	Amarillo	Ardent Health Services	445	1,995
Encompass Health Rehabilitation Hospital of Wichita Falls	Wichita Falls	Encompass Health	63	227
Northwest Emergency at Town Square	Amarillo	Universal Health Services, Inc.		
Northwest Texas Healthcare System	Amarillo	Universal Health Services, Inc.	405	1,889
Pampa Regional Medical Center	Pampa	Prime Healthcare Services	102	218
Physician Surgical Hospital	Amarillo	Ardent Health Services	41	179
The Pavilion At Northwest Texas	Amarillo	Universal Health Services, Inc.	90	240
The Recovery Center	Wichita Falls	Universal Health Services, Inc.	34	92
<b>REP. RANDY WEBER (R)/ TEXAS 14TH</b>				
<b>1 HOSPITAL</b>				
Mainland Medical Center	Texas City	HCA Healthcare	222	561
<b>REP. VICENTE GONZALEZ (D)/ TEXAS 15TH</b>				
<b>10 HOSPITALS</b>				
Cornerstone Regional Hospital	Edinburg	Universal Health Services, Inc.	14	
Edinburg Children's Hospital	Edinburg	Universal Health Services, Inc.	86	
Edinburg Regional Medical Center	Edinburg	Universal Health Services, Inc.	127	
McAllen Heart Hospital	McAllen	Universal Health Services, Inc.	60	
McAllen Medical Center	McAllen	Universal Health Services, Inc.	441	2,604
Rio Grande Regional Hospital	McAllen	HCA Healthcare	320	1,110
South Texas Behavioral Health Center	Edinburg	Universal Health Services, Inc.	134	
South Texas Health System ER McColl	Edinburg	Universal Health Services, Inc.		
South Texas Health System ER Monte Cristo	Edinburg	Universal Health Services, Inc.		
South Texas Health System ER Weslaco	Weslaco	Universal Health Services, Inc.		

BACK TO TOP



# TEXAS FAH MEMBER FACILITIES

			Beds	Employees
<b>REP. VERONICA ESCOBAR (D)/ TEXAS 16TH</b>				
<b>9 HOSPITALS</b>				
Del Sol Medical Center	El Paso	HCA Healthcare	347	1,379
El Paso Behavioral Health	El Paso	Universal Health Services, Inc.	163	430
Kindred Hospital El Paso	El Paso	Kindred Healthcare	72	197
Las Palmas Medical Center	El Paso	HCA Healthcare	327	1,115
Las Palmas Rehabilitation Hospital	El Paso	HCA Healthcare		
The Hospitals of Providence East Campus	El Paso	Tenet Healthcare Corporation	182	881
The Hospitals of Providence Memorial Campus	El Paso	Tenet Healthcare Corporation	480	1,507
The Hospitals of Providence Sierra Campus	El Paso	Tenet Healthcare Corporation	329	999
The Hospitals of Providence Transmountain Campus	El Paso	Tenet Healthcare Corporation		
<b>REP. BILL FLORES (R)/ TEXAS 17TH</b>				
<b>5 HOSPITALS</b>				
CHI St. Joseph Health Rehabilitation Hospital, an affiliate of Encompass Health	Bryan	Encompass Health	49	135
College Station Medical Center	College Station	Community Health Systems	167	471
Parkview Regional Hospital	Mexia	LifePoint Health	58	182
St. David's North Austin Medical Center	Austin	HCA Healthcare	379	1,857
St David's Children's Hospital	Austin	HCA Healthcare		
<b>REP. SHEILA JACKSON LEE (D)/ TEXAS 18TH</b>				
<b>7 HOSPITALS</b>				
Cypress Creek Hospital	Houston	Universal Health Services, Inc.	96	97
Encompass Health Rehabilitation Hospital of Humble	Humble	Encompass Health	90	192
Houston Northwest Medical Center	Houston	HCA Healthcare	423	1,299
Kindred Hospital Spring	Houston	Kindred Healthcare	115	176

BACK TO TOP



# TEXAS FAH MEMBER FACILITIES

			Beds	Employees
Kindred Hospital The Heights	Houston	Kindred Healthcare	68	154
Kindred Rehabilitation Hospital Northeast Houston	Humble	Kindred Healthcare	46	129
Plaza Specialty Hospital	Houston	HCA Healthcare		

## REP. JODEY ARRINGTON (R)/ TEXAS 19TH 2 HOSPITALS

Abilene Regional Medical Center	Abilene	Community Health Systems	231	721
Encompass Health Rehabilitation Hospital of Abilene	Abilene	Encompass Health	30	136

## REP. JOAQUIN CASTRO (D)/ TEXAS 20TH 3 HOSPITALS

Encompass Health Rehabilitation Institute of San Antonio	San Antonio	Encompass Health	108	239
Kindred Hospital San Antonio	San Antonio	Kindred Healthcare	59	136
Methodist Teksan Hospital	San Antonio	HCA Healthcare	120	515

## REP. CHIP ROY (R)/ TEXAS 21ST 17 HOSPITALS

Laurel Ridge Treatment Center	San Antonio	Universal Health Services, Inc.	250	500
Methodist Ambulatory Surgery Center - North Central	San Antonio	HCA Healthcare		
Methodist Ambulatory Surgery Hospital NW	San Antonio	HCA Healthcare	22	
Methodist Boerne Emergency Center	Boerne	HCA Healthcare		
Methodist Heart Hospital	San Antonio	HCA Healthcare		
Methodist Hospital	San Antonio	HCA Healthcare	1,013	3,995
Methodist Children's Hospital of South Texas	San Antonio	HCA Healthcare		
Methodist Specialty and Transplant Hospital	San Antonio	HCA Healthcare	383	1,130
Methodist Stone Oak Hospital	San Antonio	HCA Healthcare	242	1,090
Metropolitan Methodist Emergency Center at the Quarry	San Antonio	HCA Healthcare		
North Central Baptist Hospital	San Antonio	Tenet Healthcare Corporation	387	1,253

BACK TO TOP





# TEXAS FAH MEMBER FACILITIES

			Beds	Employees
Northeast Baptist Hospital	San Antonio	Tenet Healthcare Corporation	371	979
San Marcos Treatment Center	San Marcos	Universal Health Services, Inc.	265	336
St. David's South Austin Medical Center	Austin	HCA Healthcare	300	1,736
St. Luke's Baptist Hospital	San Antonio	Tenet Healthcare Corporation	282	1,004
Texas Neurorehab Center	Austin	Universal Health Services, Inc.	151	406
Texas Star Recovery	Austin	Universal Health Services, Inc.	28	

### REP. PETE OLSON (R)/ TEXAS 22ND 6 HOSPITALS

Encompass Health Rehabilitation Hospital of Pearland	Pearland	Encompass Health		
Encompass Health Rehabilitation Hospital of Sugar Land	Sugar Land	Encompass Health	50	240
HCA Houston Healthcare - Clear Lake	Webster	HCA Healthcare	490	1,914
Kindred Hospital Clear Lake	Webster	Kindred Healthcare	110	260
Kindred Hospital Sugar Land	Sugar Land	Kindred Healthcare	105	242
Pearland Medical Center	Pearland	HCA Healthcare	34	281

### REP. WILL HURD (R)/ TEXAS 23RD 1 HOSPITAL

Fort Duncan Medical Center	Eagle Pass	Universal Health Services, Inc.	101	387
----------------------------	------------	---------------------------------	-----	-----

### REP. KENNY MARCHANT (R)/ TEXAS 24TH 3 HOSPITALS

Dallas Medical Center	Dallas	Prime Healthcare Services	155	328
Encompass Health Rehabilitation Hospital of the Mid-Cities	Bedford	Encompass Health	60	213
Medical City Las Colinas	Irving	HCA Healthcare	100	477

^  
BACK  
TO TOP



# TEXAS FAH MEMBER FACILITIES

			Beds	Employees
<b>REP. ROGER WILLIAMS (R)/ TEXAS 25TH</b>				
<b>4 HOSPITALS</b>				
Austin Lakes Hospital	Austin	Universal Health Services, Inc.	58	152
Hill Regional Hospital	Hillsboro	Community Health Systems	116	158
St David's Medical Center	Austin	HCA Healthcare	426	2143
St David's Rehabilitation Hospital	Austin	HCA Healthcare		
<b>REP. MICHAEL BURGESS (R)/ TEXAS 26TH</b>				
<b>4 HOSPITALS</b>				
Mayhill Hospital	Denton	Universal Health Services, Inc.	59	156
Medical City Denton	Denton	HCA Healthcare	208	935
Medical City Lewisville	Lewisville	HCA Healthcare	186	784
University Behavioral Health of Denton	Denton	Universal Health Services, Inc.	104	237
<b>REP. MICHAEL CLOUD (R)/ TEXAS 27TH</b>				
<b>9 HOSPITALS</b>				
Bayview Behavioral Hospital	Corpus Christi	HCA Healthcare		
Corpus Christi Medical Center	Corpus Christi	HCA Healthcare	631	1455
Corpus Christi Medical Center - Bay Area	Corpus Christi	HCA Healthcare		
Corpus Christi Medical Center - Doctors Regional	Corpus Christi	HCA Healthcare		
Corpus Christi Medical Center - Heart Hospital	Corpus Christi	HCA Healthcare		
Corpus Christi Medical Center - Northwest Regional Hospital	Corpus Christi	HCA Healthcare		
DeTar Hospital Navarro	Victoria	Community Health Systems	308	1,022
DeTar Hospital North (Campus of DeTar Hospital Navarro)	Victoria	Community Health Systems		
Northshore Emergency Center	Portland	HCA Healthcare		

BACK TO TOP



# TEXAS FAH MEMBER FACILITIES

			Beds	Employees
<b>REP. HENRY CUELLAR (D)/ TEXAS 28TH</b>				
<b>6 HOSPITALS</b>				
Doctors Hospital of Laredo	Laredo	Universal Health Services, Inc.	183	873
Doctors Hospital ER South	Laredo	Universal Health Services, Inc.		
Laredo Medical Center	Laredo	Community Health Systems	326	1,170
Mission Regional Medical Center	Mission	Prime Healthcare Services	289	774
Northeast Methodist Hospital	San Antonio	HCA Healthcare	177	869
South Texas Health System ER Mission	Mission	Universal Health Services, Inc.		
<b>REP. EDDIE BERNICE JOHNSON (D)/ TEXAS 30TH</b>				
<b>2 HOSPITALS</b>				
Hickory Trail Hospital	De Soto	Universal Health Services, Inc.	86	201
Methodist Rehabilitation Hospital	Dallas	Kindred Healthcare	40	182
<b>REP. JOHN CARTER (R)/ TEXAS 31ST</b>				
<b>7 HOSPITALS</b>				
Cedar Park Regional Medical Center	Cedar Park	Community Health Systems	93	588
Encompass Health Rehabilitation Hospital of Round Rock	Round Rock	Encompass Health	75	215
Meridell Achievement Center	Liberty Hill	Universal Health Services, Inc.	134	199
Seton Medical Center Harker Heights	Harker Heights	Ardent Health Services	83	300
St. David's Georgetown Hospital	Georgetown	HCA Healthcare	111	
St. David's Round Rock Medical Center	Round Rock	HCA Healthcare	171	1,001
St. David's Surgical Hospital	Austin	HCA Healthcare	46	

BACK TO TOP



# TEXAS FAH MEMBER FACILITIES

			Beds	Employees
<b>REP. COLIN ALLRED (D)/ TEXAS 32ND</b>				
<b>7 HOSPITALS</b>				
Encompass Health Rehabilitation Hospital of Dallas	Dallas	Encompass Health	60	143
Garland Behavioral Hospital	Garland	Universal Health Services, Inc.	72	128
Kindred Hospital Dallas	Dallas	Kindred Healthcare	74	182
Kindred Hospital Dallas Central	Dallas	Kindred Healthcare	60	159
Medical City Dallas Hospital	Dallas	HCA Healthcare	839	3,145
Medical City Children's Hospital	Dallas	HCA Healthcare		
Medical City Green Oaks Hospital	Dallas	HCA Healthcare	124	336
<b>REP. MARC VEASEY (D)/ TEXAS 33RD</b>				
<b>1 HOSPITAL</b>				
Millwood Hospital	Arlington	Universal Health Services, Inc.	122	355
<b>REP. FILEMON VELA (D)/ TEXAS 34TH</b>				
<b>5 HOSPITALS</b>				
Harlingen Medical Center	Harlingen	Prime Healthcare Services	112	611
Knapp Medical Center	Weslaco	Prime Healthcare Services	233	694
Valley Baptist Medical Center-Brownsville	Brownsville	Tenet Healthcare Corporation	280	776
Valley Baptist Medical Center-Harlingen	Harlingen	Tenet Healthcare Corporation	586	1,199
Valley Regional Medical Center	Brownsville	HCA Healthcare	214	768
<b>REP. LLOYD DOGGETT (D)/ TEXAS 35TH</b>				
<b>7 HOSPITALS</b>				
Austin Oaks Hospital	Austin	Universal Health Services, Inc.	80	212
Baptist Medical Center	San Antonio	Tenet Healthcare Corporation	623	1,358
Encompass Health Rehabilitation Hospital of Austin	Austin	Encompass Health	60	196

BACK TO TOP



# TEXAS FAH MEMBER FACILITIES

			Beds	Employees
Kindred Hospital San Antonio Central	San Antonio	Kindred Healthcare	44	108
Metropolitan Methodist Hospital	San Antonio	HCA Healthcare	354	1,358
Mission Trail Baptist Hospital	San Antonio	Tenet Healthcare Corporation	110	550
Resolute Health Hospital	New Braunfels	Tenet Healthcare Corporation	128	424
<b>REP. BRIAN BABIN (R)/ TEXAS 36TH</b>				
<b>3 HOSPITALS</b>				
Bayshore Medical Center	Pasadena	HCA Healthcare	341	1,282
Kindred Hospital Bay Area	Pasadena	Kindred Healthcare	74	220
Kindred Rehabilitation Hospital Clear Lake	Webster	Kindred Healthcare	60	210

^  
BACK  
TO TOP