



PENNSYLVANIA

FAH MEMBER FACILITIES

SENATE

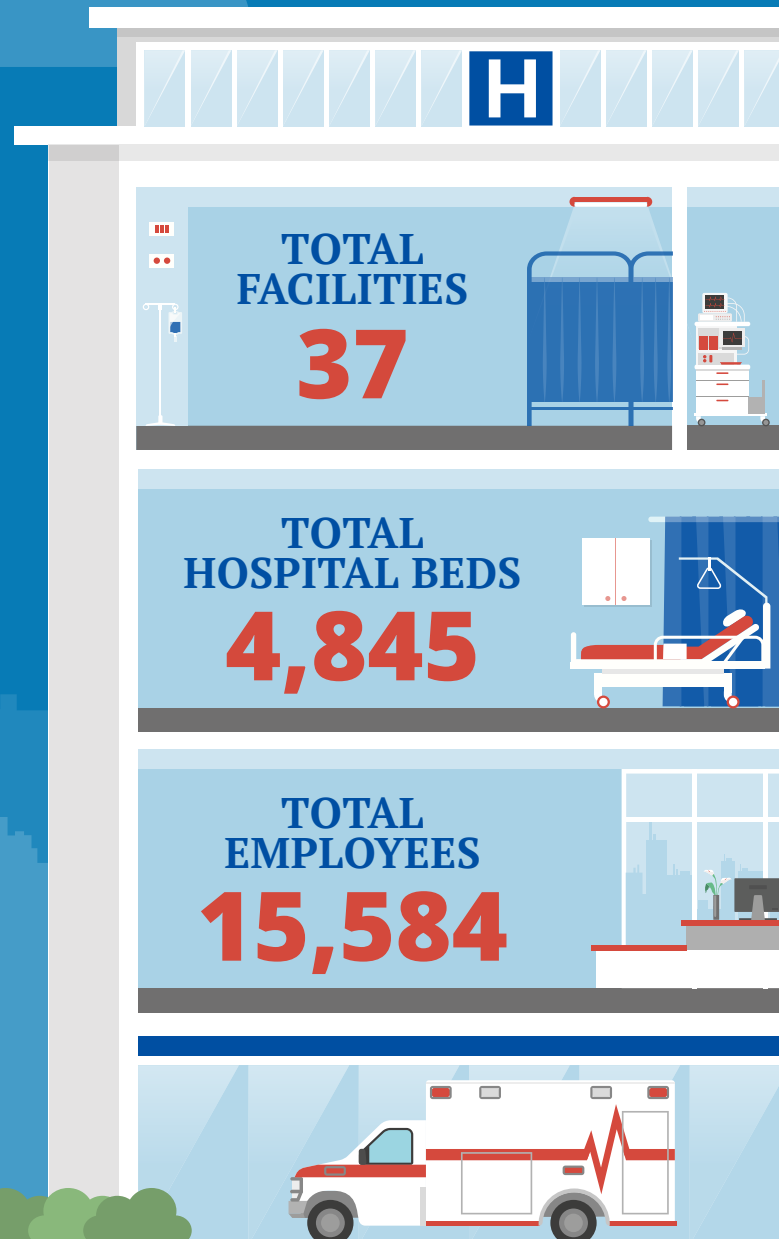
Sen. Bob Casey (D)
Sen. PA Toomey (R)

HOUSE *(Click name to view the district)*

Rep. Brian Fitzpatrick (R)/ Pennsylvania 1st
Rep. Brendan Boyle (D)/ Pennsylvania 2nd
Rep. Dwight Evans (D)/ Pennsylvania 3rd
Rep. Madeleine Dean (D)/ Pennsylvania 4th
Rep. Mary Scanlon (D)/ Pennsylvania 5th
Rep. Chrissy Houlahan (D)/ Pennsylvania 6th
Rep. Matthew Cartwright (D)/ Pennsylvania 8th
Rep. Daniel Meuser (R)/ Pennsylvania 9th
Rep. Scott Perry (R)/ Pennsylvania 10th
Rep. Lloyd Smucker (R)/ Pennsylvania 11th
Vacant / Pennsylvania 12th
Rep. John Joyce (R)/ Pennsylvania 13th
Rep. Glenn Thompson (R)/ Pennsylvania 15th
Rep. Mike Kelly (R)/ Pennsylvania 16th
Rep. Conor Lamb (D)/ Pennsylvania 17th



Federation of American Hospitals represents America's investor-owned community hospitals and health systems.





PENNSYLVANIA FAH MEMBER FACILITIES

			Beds	Employees
REP. BRIAN FITZPATRICK (R)/ PENNSYLVANIA 1ST				
3 HOSPITALS				
Foundations Behavioral Health	Doylestown	Universal Health Services, Inc.	108	149
Lower Bucks Hospital	Bristol	Prime Healthcare Services	139	438
St. Mary Rehabilitation Hospital	Langhorne	Kindred Healthcare	50	91
REP. BRENDAN BOYLE (D)/ PENNSYLVANIA 2ND				
2 HOSPITALS				
Friends Hospital	Philadelphia	Universal Health Services, Inc.	219	581
Kindred Hospital Philadelphia	Philadelphia	Kindred Healthcare	52	146
REP. DWIGHT EVANS (D)/ PENNSYLVANIA 3RD				
3 HOSPITALS				
Fairmount Behavioral Health System	Philadelphia	Universal Health Services, Inc.	239	529
Kindred Hospital South Philadelphia	Philadelphia	Kindred Healthcare	58	134
Roxborough Memorial Hospital	Philadelphia	Prime Healthcare Services	107	399
REP. MADELEINE DEAN (D)/ PENNSYLVANIA 4TH				
3 HOSPITALS				
Brooke Glen Behavioral Hospital	Fort Washington	Universal Health Services, Inc.	146	355
Horsham Clinic	Ambler	Universal Health Services, Inc.	206	479
Suburban Community Hospital	East Norriton	Prime Healthcare Services	73	391
REP. MARY SCANLON (D)/ PENNSYLVANIA 5TH				
2 HOSPITALS				
Keystone Center	Chester	Universal Health Services, Inc.	153	177
Kindred Hospital Philadelphia Havertown	Havertown	Kindred Healthcare	57	179


 BACK
 TO TOP



PENNSYLVANIA FAH MEMBER FACILITIES

			Beds	Employees
REP. CHRISSE HOULAHAN (D)/ PENNSYLVANIA 6TH				
1 HOSPITAL				
Encompass Health Rehabilitation Hospital of Reading	Reading	Encompass Health	60	197
REP. MATTHEW CARTWRIGHT (D)/ PENNSYLVANIA 8TH				
4 HOSPITALS				
First Hospital Wyoming Valley	Kingston	Community Health Systems	127	361
Moses Taylor Hospital	Scranton	Community Health Systems	217	903
Regional Hospital of Scranton	Scranton	Community Health Systems	328	902
Wilkes-Barre General Hospital	Wilkes-Barre	Community Health Systems	547	1,661
REP. DANIEL MEUSER (R)/ PENNSYLVANIA 9TH				
2 HOSPITALS				
Berwick Hospital Center	Berwick	Community Health Systems	101	257
Geisinger Encompass Health Rehabilitation Hospital	Danville	Encompass Health	42	211
REP. SCOTT PERRY (R)/ PENNSYLVANIA 10TH				
2 HOSPITALS				
Encompass Health Rehabilitation Hospital of Mechanicsburg	Mechanicsburg	Encompass Health	75	229
Encompass Health Rehabilitation Hospital of York	York	Encompass Health	90	273
REP. LLOYD SMUCKER (R)/ PENNSYLVANIA 11TH				
2 HOSPITALS				
Lancaster Behavioral Health Hospital	Lancaster	Universal Health Services	126	139

^
BACK
TO TOP



PENNSYLVANIA FAH MEMBER FACILITIES

			Beds	Employees
Lancaster Rehabilitation Hospital	Lancaster	Kindred Healthcare	59	255
VACANT / PENNSYLVANIA 12TH 2 HOSPITALS				
The Meadows / Universal Community Behavioral Health	Centre Hall	Universal Health Services, Inc.	117	234
Tyler Memorial Hospital	Tunkhannock	Community Health Systems	60	157
REP. JOHN JOYCE (R)/ PENNSYLVANIA 13TH 5 HOSPITALS				
Conemaugh Memorial Medical Center	Johnstown	LifePoint Health	539	3,644
Conemaugh Meyersdale Medical Center	Meyersdale	LifePoint Health	20	133
Conemaugh Nason Medical Hospital	Roaring Spring	LifePoint Health	45	313
Encompass Health Rehabilitation Hospital of Altoona	Altoona	Encompass Health	80	352
Roxbury Treatment Center	Shippensburg	Universal Health Services, Inc.	112	162
REP. GLENN THOMPSON (R)/ PENNSYLVANIA 15TH 3 HOSPITALS				
Clarion Psychiatric Center	Clarion	Universal Health Services, Inc.	76	180
Conemaugh Miners Medical Center	Hastings	LifePoint Health	30	133
Encompass Health Rehabilitation Hospital of Nittany Valley	Pleasant Gap	Encompass Health	73	206
REP. MIKE KELLY (R)/ PENNSYLVANIA 16TH 1 HOSPITAL				
Encompass Health Rehabilitation Hospital of Erie	Erie	Encompass Health	108	192

^
BACK
TO TOP



PENNSYLVANIA FAH MEMBER FACILITIES

REP. CONOR LAMB (D)/ PENNSYLVANIA 17TH 2 HOSPITALS

			Beds	Employees
Encompass Health Rehabilitation Hospital of Harmarville	Pittsburgh	Encompass Health	162	300
Encompass Health Rehabilitation Hospital of Sewickley	Sewickley	Encompass Health	44	142

^
BACK
TO TOP