



NEW JERSEY

FAH MEMBER FACILITIES

SENATE

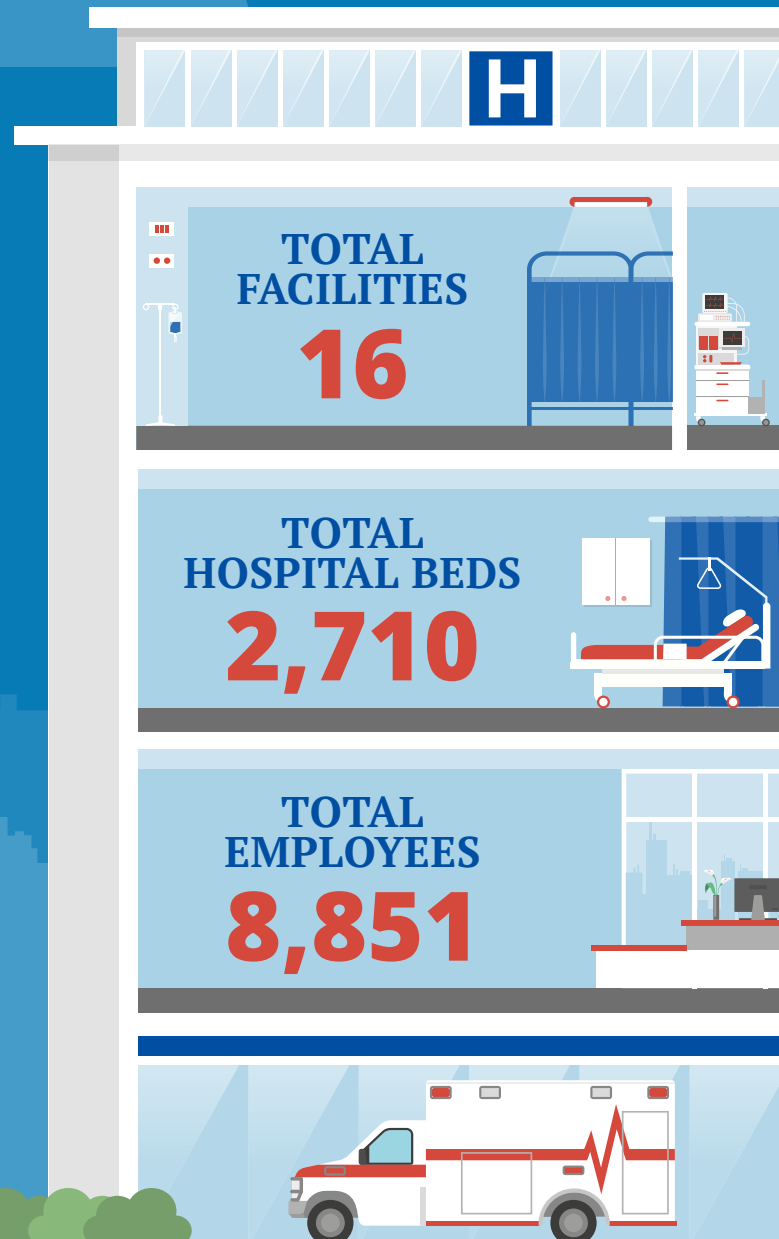
Sen. Cory Booker (D)
Sen. Robert Menendez (D)

HOUSE *(Click name to view the district)*

Rep. Jeff Van Drew (D)/ New Jersey 2nd
Rep. Andrew Kim (D)/ New Jersey 3rd
Rep. Chris Smith (R)/ New Jersey 4th
Rep. Josh Gottheimer (D)/ New Jersey 5th
Rep. Tom Malinowski (D)/ New Jersey 7th
Rep. Bill Pascrell (D)/ New Jersey 9th
Rep. Donald Payne Jr. (D)/ New Jersey 10th
Rep. Mikie Sherrill (D)/ New Jersey 11th



Federation of American Hospitals represents America's investor-owned community hospitals and health systems.





NEW JERSEY FAH MEMBER FACILITIES

			Beds	Employees
REP. JEFF VAN DREW (D)/ NEW JERSEY 2ND				
2 HOSPITALS				
Encompass Health Rehabilitation Hospital of Vineland	Vineland	Encompass Health	41	167
Memorial Hospital of Salem County	Salem	Community Health Systems	140	372
REP. ANDREW KIM (D)/ NEW JERSEY 3RD				
2 HOSPITALS				
Encompass Health Rehabilitation Hospital of Toms River	Toms River	Encompass Health	98	371
Hampton Behavioral Health Center	Westampton Township	Universal Health Services, Inc.	120	520
REP. CHRIS SMITH (R)/ NEW JERSEY 4TH				
1 HOSPITAL				
Encompass Health Rehabilitation Hospital of Tinton Falls	Tinton Falls	Encompass Health	60	233
REP. JOSH GOTTHEIMER (D)/ NEW JERSEY 5TH				
1 HOSPITAL				
Hackensack UMC at Pascack Valley	Westwood	Ardent Health Services	123	1,106
REP. TOM MALINOWSKI (D)/ NEW JERSEY 7TH				
3 HOSPITALS				
Kindred Hospital New Jersey - Morris County	Dover	Kindred Healthcare	45	133
Saint Clare's Dover Hospital	Dover	Prime Healthcare Services	324	382
Summit Oaks Hospital	Summit	Universal Health Services	126	362
REP. BILL PASCRELL (D)/ NEW JERSEY 9TH				
1 HOSPITAL				
Saint Mary's General Hospital	Passaic	Prime Healthcare Services	286	768
REP. DONALD PAYNE JR. (D)/ NEW JERSEY 10TH				
3 HOSPITALS				
Hackensack UMC Mountainside	Montclair	Ardent Health Services	353	1,500
Kindred Hospital New Jersey - Rahway	Rahway	Kindred Healthcare	34	110
Saint Michael's Medical Center	Newark	Prime Healthcare Services	358	950

BACK TO TOP



NEW JERSEY FAH MEMBER FACILITIES

			Beds	Employees
REP. MIKIE SHERRILL (D)/ NEW JERSEY 11TH 3 HOSPITAL				
Kindred Hospital New Jersey - Wayne	Wayne	Kindred Healthcare	38	92
Saint Clare's Boonton Hospital	Boonton Township	Prime Healthcare Services	146	
Saint Clare's Denville Hospital	Denville	Prime Healthcare Services	418	1,785

^
BACK
TO TOP