



NEW HAMPSHIRE

FAH MEMBER FACILITIES

SENATE

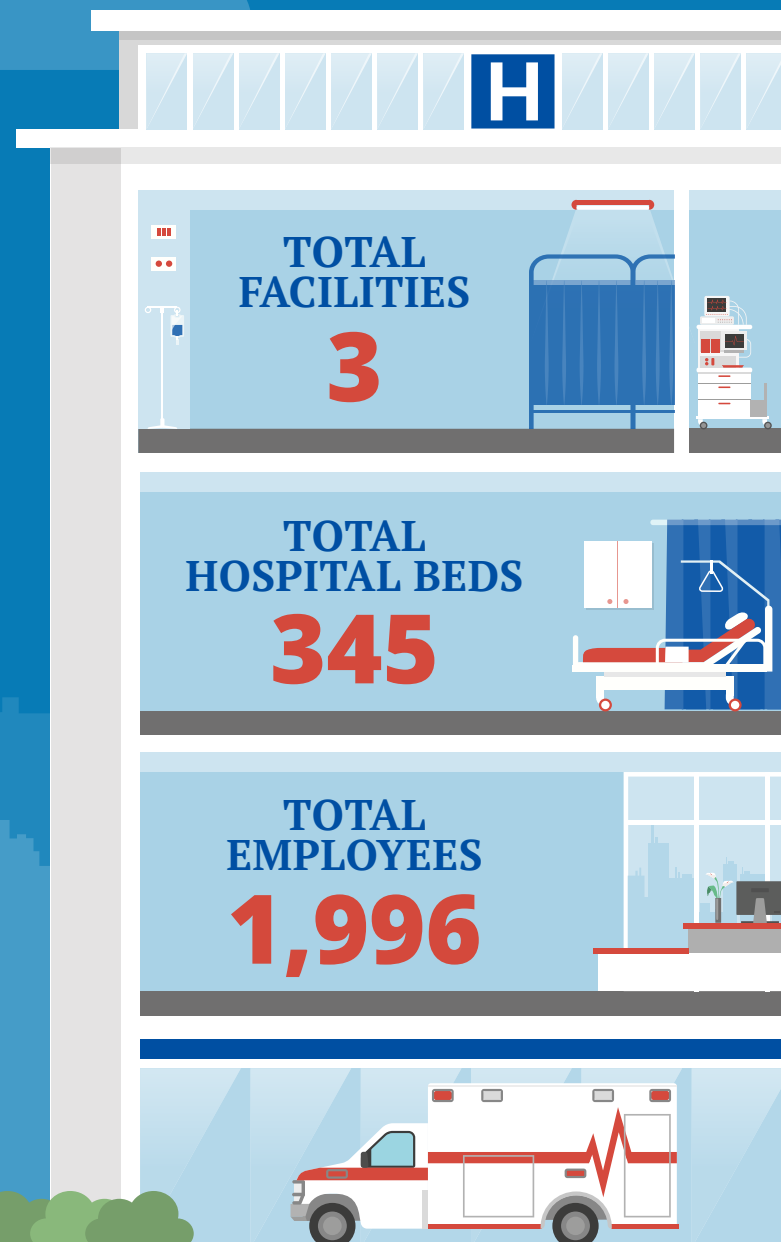
Sen. Maggie Hassan (D)
Sen. Jeanne Shaheen (D)

HOUSE *(Click name to view the district)*

Rep. Christopher Pappas (D)/ New Hampshire 1st
Rep. Ann Kuster (D)/ New Hampshire 2nd



Federation of American Hospitals represents America's investor-owned community hospitals and health systems.





NEW HAMPSHIRE FAH MEMBER FACILITIES

			Beds	Employees
REP. CHRISTOPHER PAPPAS (D)/ NEW HAMPSHIRE 1ST				
2 HOSPITALS				
Parkland Medical Center	Derry	HCA Healthcare	86	678
Portsmouth Regional Hospital	Portsmouth	HCA Healthcare	209	1,156
REP. ANN KUSTER (D)/ NEW HAMPSHIRE 2ND				
1 HOSPITAL				
Encompass Health Rehabilitation Hospital of Concord	Concord	Encompass Health	50	162

^
BACK
TO TOP