



MISSOURI

FAH MEMBER FACILITIES

SENATE

Sen. Roy Blunt (R)

Sen. Josh Hawley (D)

HOUSE *(Click name to view the district)*

Rep. William Lacy Clay (D)/ Missouri 1st

Rep. Ann Wagner (R)/ Missouri 2nd

Rep. Vicky Hartzler (R)/ Missouri 4th

Rep. Emanuel Cleaver (D)/ Missouri 5th

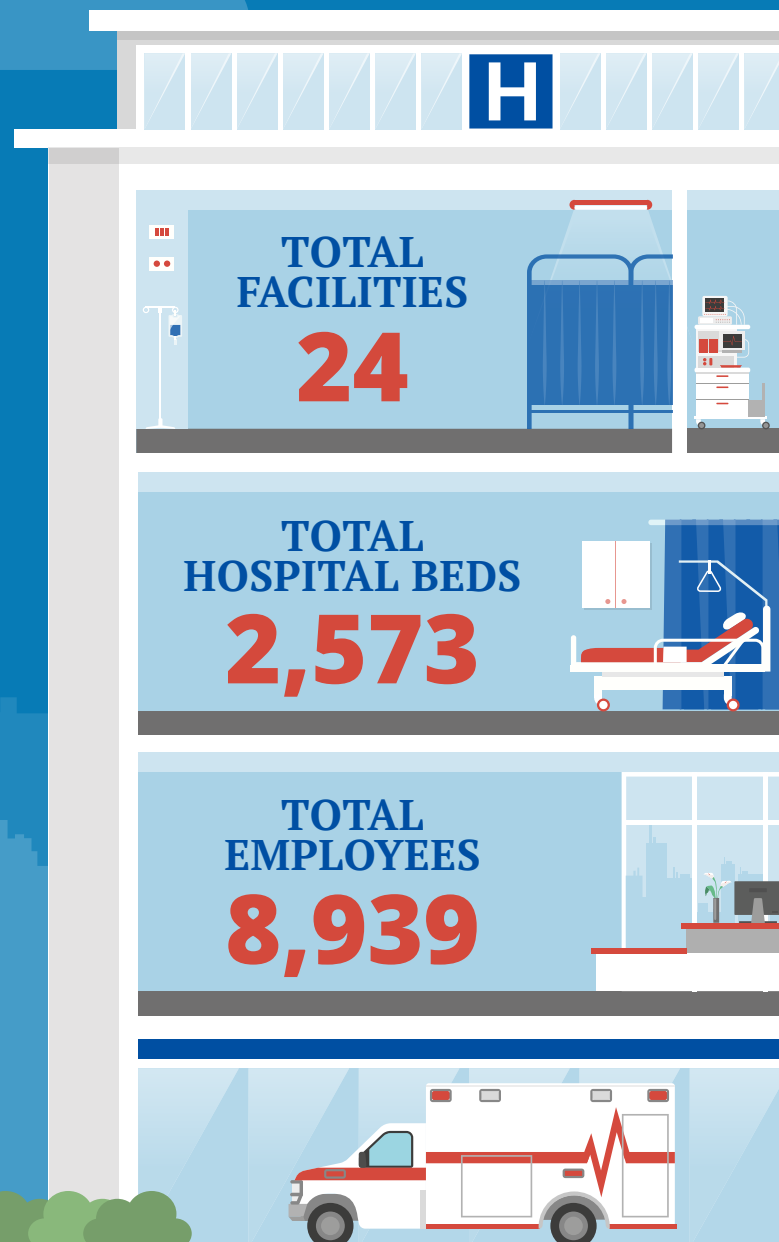
Rep. Sam Graves (R)/ Missouri 6th

Rep. Billy Long (R)/ Missouri 7th

Rep. Jason Smith (R)/ Missouri 8th



Federation of American Hospitals represents America's investor-owned community hospitals and health systems.





MISSOURI FAH MEMBER FACILITIES

			Beds	Employees
REP. WILLIAM LACY CLAY (D)/ MISSOURI 1ST				
3 HOSPITALS				
Kindred Hospital St. Louis	St. Louis	Kindred Healthcare	60	117
St. Louis Behavioral Medicine Institute	St. Louis	Universal Health Services, Inc.		89
The Rehabilitation Institute of St. Louis	St. Louis	Encompass Health	96	384
REP. ANN WAGNER (R)/ MISSOURI 2ND				
3 HOSPITALS				
Kindred Hospital St. Louis - St. Anthony's	St. Louis	Kindred Healthcare	38	110
Mercy Rehabilitation Hospital St. Louis	Chesterfield	Kindred Healthcare	90	64
St. Luke's Rehabilitation Hospital	Chesterfield	Kindred Healthcare	35	52
REP. VICKY HARTZLER (R)/ MISSOURI 4TH				
5 HOSPITALS				
Belton Regional Medical Center	Belton	HCA Healthcare	71	320
Cass Regional Medical Center	Harrisonville	HCA Healthcare	25	
Heartland Behavioral Health	Nevada	Universal Health Services, Inc.	151	236
Moberly Regional Medical Center	Moberly	Community Health Systems	101	282
Rusk Rehabilitation Hospital, an affiliation of Encompass Health and MU Health Care	Columbia	Encompass Health	60	236
REP. EMANUEL CLEAVER (D)/ MISSOURI 5TH				
7 HOSPITALS				
Centerpoint Medical Center	Independence	HCA Healthcare	257	1,462
Lafayette Regional Health Center	Lexington	HCA Healthcare	32	
Research Medical Center	Kansas City	HCA Healthcare	590	2,380
Research Medical Center Brookside	Kansas City	HCA Healthcare		
Research Psychiatric Center	Kansas City	HCA Healthcare		
St. Joseph Medical Center	Kansas City	Prime Healthcare Services	300	755
St. Mary's Medical Center	Blue Springs	Prime Healthcare Services	111	414

^
BACK
TO TOP



MISSOURI FAH MEMBER FACILITIES

			Beds	Employees
REP. SAM GRAVES (R)/ MISSOURI 6TH				
4 HOSPITALS				
Carroll County Memorial Hospital	Carrollton	HCA Healthcare	25	
Kindred Hospital Northland	Kansas City	Kindred Healthcare	35	132
Lee's Summit Medical Center	Lee's Summit	HCA Healthcare	80	490
Northeast Regional Medical Center	Kirkville	Community Health Systems	115	412
REP. BILLY LONG (R)/ MISSOURI 7TH				
1 HOSPITAL				
Mercy Rehabilitation Hospital Springfield	Springfield	Kindred Healthcare	60	46
REP. JASON SMITH (R)/ MISSOURI 8TH				
1 HOSPITAL				
Poplar Bluff Regional Medical Center	Poplar Bluff	Community Health Systems	241	958

^
BACK
TO TOP