



# MISSISSIPPI

## FAH MEMBER FACILITIES

### SENATE

Sen. Roger Wicker (R)

Sen. Cindy Hyde-Smith (R)

### HOUSE *(Click name to view the district)*

Rep. Trent Kelly (R)/ Mississippi 1st

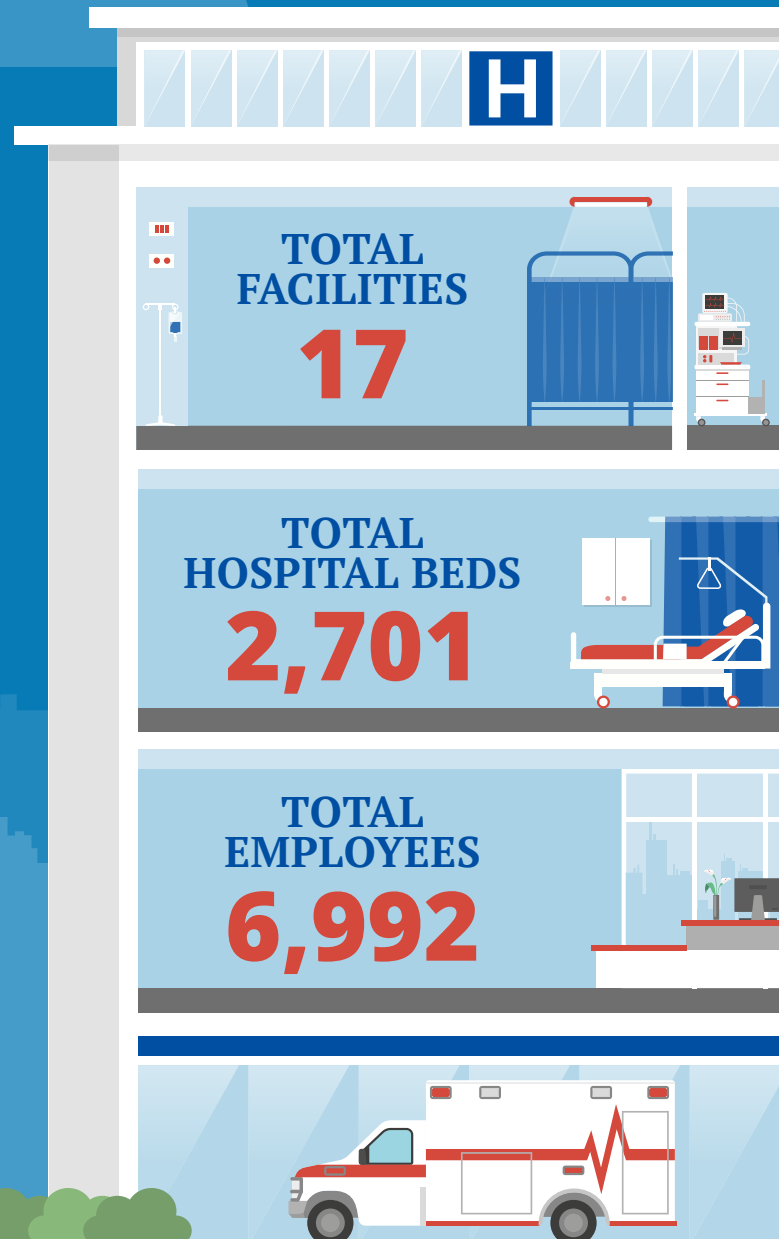
Rep. Bennie Thompson (D)/ Mississippi 2nd

Rep. Michael Guest (R)/ Mississippi 3rd

Rep. Steven Palazzo (R)/ Mississippi 4th



Federation of American Hospitals represents America's investor-owned community hospitals and health systems.





# MISSISSIPPI FAH MEMBER FACILITIES

			Beds	Employees
<b>REP. TRENT KELLY (R)/ MISSISSIPPI 1ST</b>				
<b>3 HOSPITALS</b>				
Diamond Grove Center for Children	Louisville	Universal Health Services, Inc.	55	142
Northwest Mississippi Regional Medical Center	Clarksdale	Community Health Systems		181
Parkwood Behavioral Health System	Olive Branch	Universal Health Services, Inc.	148	284
<b>REP. BENNIE THOMPSON (D)/ MISSISSIPPI 2ND</b>				
<b>4 HOSPITALS</b>				
Bolivar Medical Center	Cleveland	LifePoint Health	199	495
Merit Health Central	Jackson	Community Health Systems	429	868
Merit Health Madison	Canton	Community Health Systems	67	272
Merit Health River Region	Vicksburg	Community Health Systems	372	732
<b>REP. MICHAEL GUEST (R)/ MISSISSIPPI 3RD</b>				
<b>6 HOSPITALS</b>				
Alliance Health Center	Meridian	Universal Health Services, Inc.	214	360
Brentwood Behavioral Healthcare of Mississippi	Flowood	Universal Health Services, Inc.	121	261
Merit Health Natchez	Natchez	Community Health Systems	179	511
Merit Health Rankin	Brandon	Community Health Systems	149	294
Merit Health River Oaks	Flowood	Community Health Systems	160	662
Merit Health Woman's Hospital	Jackson	Community Health Systems	109	213
<b>REP. STEVEN PALAZZO (R)/ MISSISSIPPI 4TH</b>				
<b>4 HOSPITALS</b>				
Encompass Health Rehabilitation Hospital, a partner of Memorial Hospital at Gulfport	Gulfport	Encompass Health		
Gulfport Behavioral Health System	Gulfport	Universal Health Services, Inc.	90	137
Merit Health Biloxi	Biloxi	Community Health Systems	198	694
Merit Health Wesley	Hattiesburg	Community Health Systems	211	886

BACK TO TOP