



MASSACHUSETTS

FAH MEMBER FACILITIES

SENATE

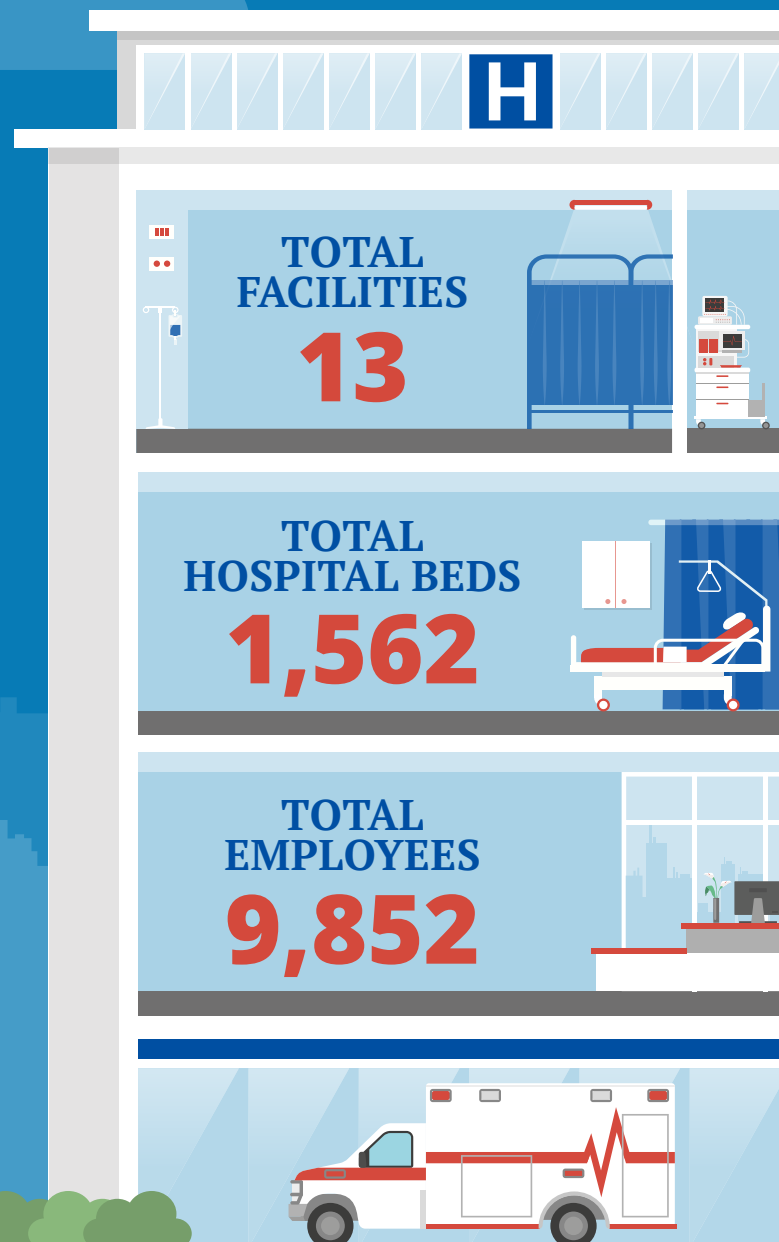
Sen. Edward Markey (D)
Sen. Elizabeth Warren (D)

HOUSE *(Click name to view the district)*

Rep. Richard E. Neal (D)/ Massachusetts 1st
Rep. James McGovern (D)/ Massachusetts 2nd
Rep. Joseph Kennedy III (D)/ Massachusetts 4th
Rep. Katherine Clark (D)/ Massachusetts 5th
Rep. Stephen F. Lynch (D)/ Massachusetts 8th
Rep. William Keating (D)/ Massachusetts 9th



Federation of American Hospitals represents America's investor-owned community hospitals and health systems.





MASSACHUSETTS FAH MEMBER FACILITIES

			Beds	Employees
REP. RICHARD E. NEAL (D)/ MASSACHUSETTS 1ST				
1 HOSPITAL				
Encompass Health Rehabilitation Hospital of Western Massachusetts	Ludlow	Encompass Health	53	228
REP. JAMES MCGOVERN (D)/ MASSACHUSETTS 2ND				
2 HOSPITALS				
Fairlawn Rehabilitation Hospital	Worcester	Encompass Health	110	376
Saint Vincent Hospital	Worcester	Tenet Healthcare Corporation	283	2,434
REP. JOSEPH KENNEDY III (D)/ MASSACHUSETTS 4TH				
2 HOSPITALS				
Fuller Hospital	South Attleboro	Universal Health Services, Inc.	102	391
HRI Hospital	Brookline	Universal Health Services, Inc.	62	220
REP. KATHERINE CLARK (D)/ MASSACHUSETTS 5TH				
3 HOSPITALS				
Encompass Health Rehabilitation Hospital of New England	Woburn	Encompass Health	210	407
MetroWest Medical Center-Framingham	Framingham	Tenet Healthcare Corporation	147	2,025
MetroWest Medical Center-Leonard Morse	Natick	Tenet Healthcare Corporation	152	2,025
REP. STEPHEN F. LYNCH (D)/ MASSACHUSETTS 8TH				
2 HOSPITALS				
Arbour Hospital	Boston	Universal Health Services, Inc.	136	458
Encompass Health Rehabilitation Hospital of Braintree	Braintree	Encompass Health	187	459
REP. WILLIAM KEATING (D)/ MASSACHUSETTS 9TH				
3 HOSPITALS				
Arbour Counseling Services	Rockland	Universal Health Services, Inc.		524
Arbour Senior Care	Rockland	Universal Health Services, Inc.		
Pembroke Hospital	Pembroke	Universal Health Services, Inc.	120	305

BACK TO TOP