



MARYLAND

FAH MEMBER FACILITIES

SENATE

Sen. Benjamin Cardin (D)

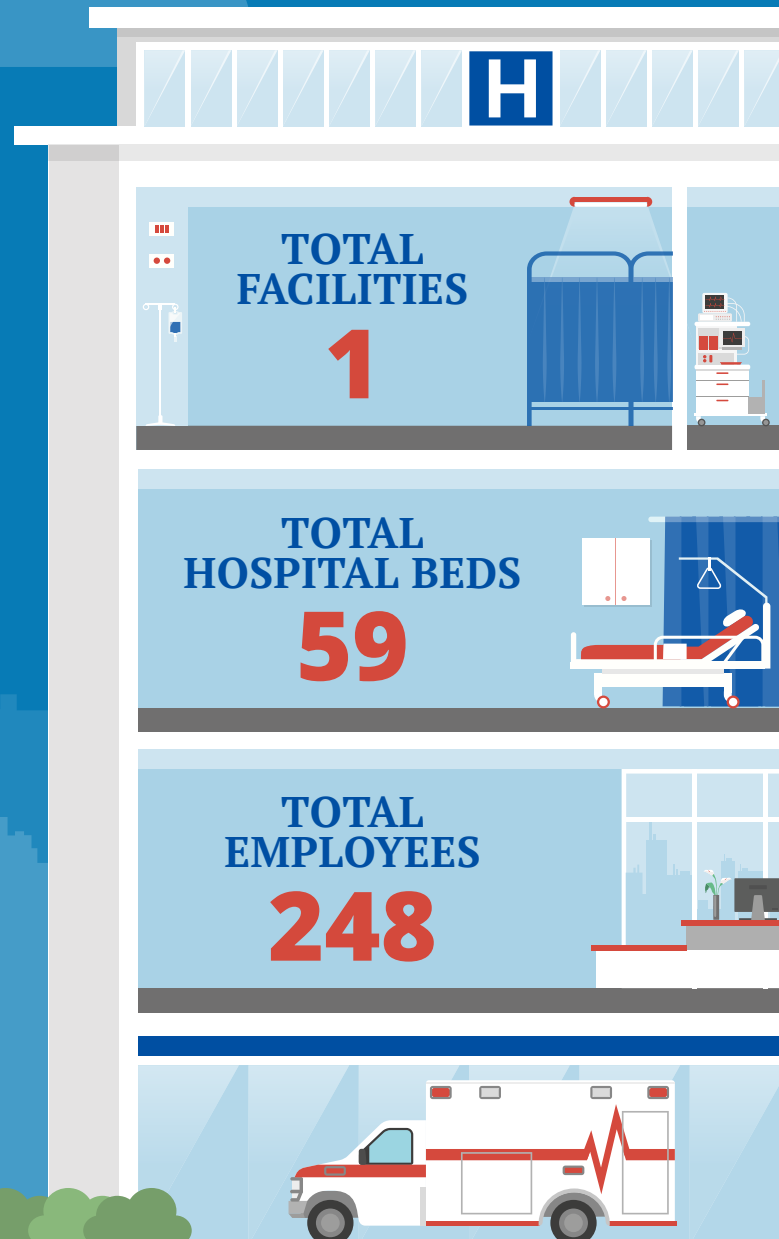
Sen. Chris Van Hollen (D)

HOUSE *(Click name to view the district)*

Rep. Andy Harris (R)/ Maryland 1st



Federation of American Hospitals represents America's investor-owned community hospitals and health systems.





			Beds	Employees
REP. ANDY HARRIS (R)/ MARYLAND 1ST 1 HOSPITAL				
Encompass Health Rehabilitation Hospital of Salisbury	Salisbury	Encompass Health	59	248

^
BACK
TO TOP