



# KENTUCKY

## FAH MEMBER FACILITIES

### SENATE

Sen. Mitch McConnell (R)

Sen. Rand Paul (R)

### HOUSE *(Click name to view the district)*

Rep. James Comer (R)/ Kentucky 1st

Rep. Brett Guthrie (R)/ Kentucky 2nd

Rep. John Yarmuth (D)/ Kentucky 3rd

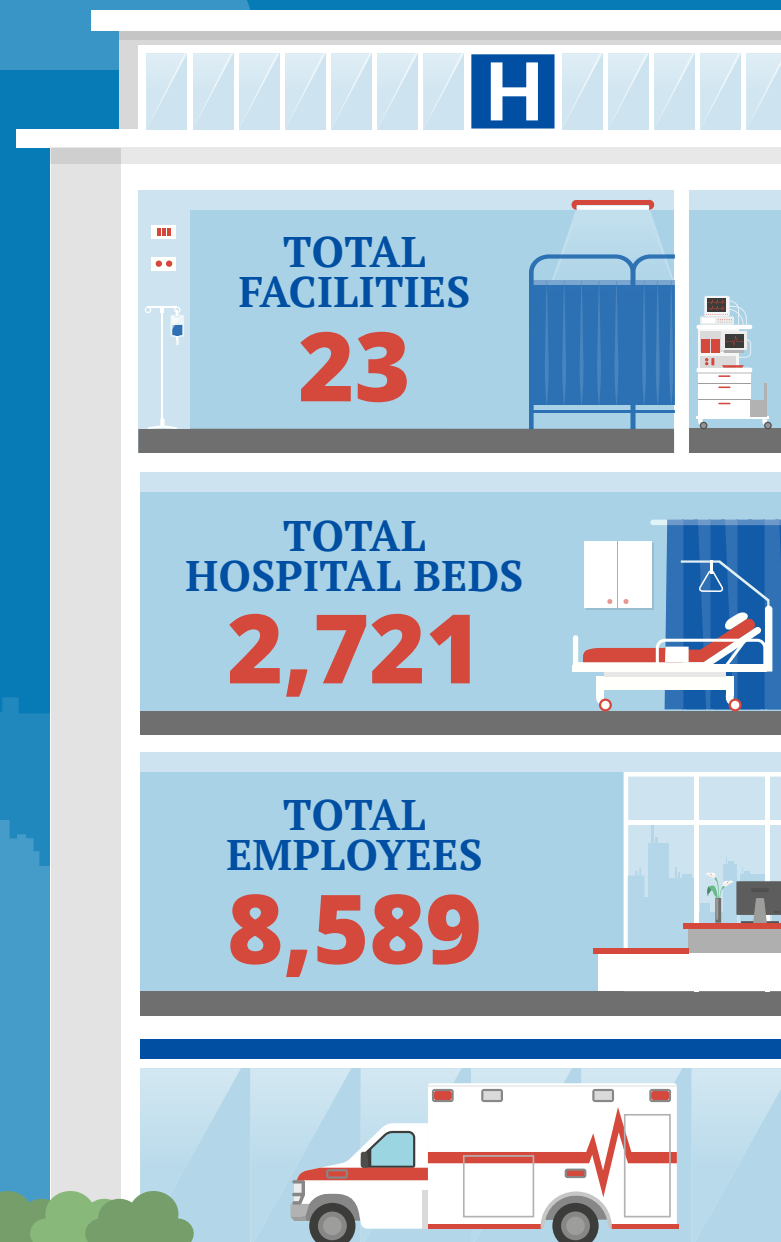
Rep. Thomas Massie (R)/ Kentucky 4th

Rep. Hal Rogers (R)/ Kentucky 5th

Rep. Andy Barr (R)/ Kentucky 6th



Federation of American Hospitals represents America's investor-owned community hospitals and health systems.





# KENTUCKY FAH MEMBER FACILITIES

			Beds	Employees
<b>REP. JAMES COMER (R)/ KENTUCKY 1ST</b>				
<b>4 HOSPITALS</b>				
Cumberland Hall Hospital	Hopkinsville	Universal Health Services, Inc.	97	156
Jackson Purchase Medical Center	Mayfield	LifePoint Health	107	586
Logan Memorial Hospital	Russellville	LifePoint Health	75	210
Spring View Hospital	Lebanon	LifePoint Health	75	280
<b>REP. BRETT GUTHRIE (R)/ KENTUCKY 2ND</b>				
<b>4 HOSPITALS</b>				
Encompass Health Lakeview Rehabilitation Hospital of Central Kentucky	Elizabethtown	Encompass Health	40	164
Lincoln Trail Behavioral Health System	Radcliff	Universal Health Services, Inc.	140	252
Rivendell of Kentucky	Bowling Green	Universal Health Services, Inc.	125	228
TriStar Greenview Regional Hospital	Bowling Green	HCA Healthcare	211	571
<b>REP. JOHN YARMUTH (D)/ KENTUCKY 3RD</b>				
<b>4 HOSPITALS</b>				
Kindred Hospital Louisville at Jewish Hospital	Louisville	Kindred Healthcare	30	81
Kindred Hospital Louisville	Louisville	Kindred Healthcare	384	444
The Brook Hospital at Dupont	Louisville	Universal Health Services, Inc.	88	224
The Brook Hospital at KMI	Louisville	Universal Health Services, Inc.	110	224
<b>REP. THOMAS MASSIE (R)/ KENTUCKY 4TH</b>				
<b>2 HOSPITALS</b>				
Encompass Health Northern Kentucky Rehabilitation Hospital	Edgewood	Encompass Health	40	187
Meadowview Regional Medical Center	Maysville	LifePoint Health	100	416
<b>REP. HAL ROGERS (R)/ KENTUCKY 5TH</b>				
<b>1 HOSPITALS</b>				
Lake Cumberland Regional Hospital	Somerset	LifePoint Health	295	1,377

^  
BACK  
TO TOP



# KENTUCKY FAH MEMBER FACILITIES

			Beds	Employees
<b>REP. ANDY BARR (R)/ KENTUCKY 6TH</b>				
<b>8 HOSPITALS</b>				
Bluegrass Community Hospital	Versailles	LifePoint Health	25	124
Bourbon Community Hospital	Paris	LifePoint Health	58	253
Cardinal Hill Rehabilitation Hospital	Lexington	Encompass Health	232	618
Clark Regional Medical Center	Winchester	LifePoint Health	79	570
Fleming County Hospital	Flemingsburg	LifePoint Health	52	195
Frankfort Regional Medical Center	Frankfort	HCA Healthcare	173	722
Georgetown Community Hospital	Georgetown	LifePoint Health	75	428
The Ridge Behavioral Health System	Lexington	Universal Health Services, Inc.	110	279

^  
BACK  
TO TOP