



KANSAS

FAH MEMBER FACILITIES

SENATE

Sen. Jerry Moran (R)

Sen. Pat Roberts (R)

HOUSE *(Click name to view the district)*

Rep. Roger Marshall (R)/ Kansas 1st

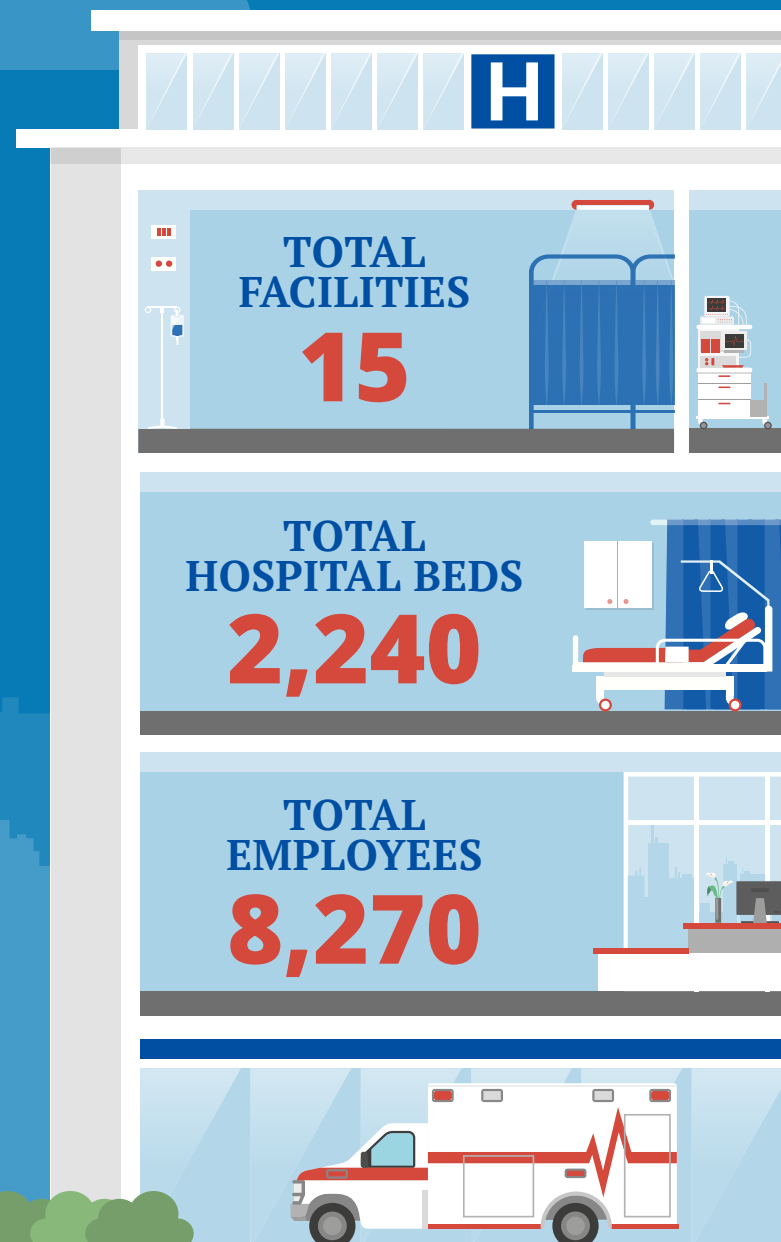
Rep. Steve Watkins (R)/ Kansas 2nd

Rep. Sharice Davids (D)/ Kansas 3rd

Rep. Ron Estes (R)/ Kansas 4th



Federation of American Hospitals represents America's investor-owned community hospitals and health systems.



KANSAS FAH MEMBER FACILITIES

			Beds	Employees
REP. ROGER MARSHALL (R)/ KANSAS 1ST				
1 HOSPITAL				
Western Plains Medical Complex	Dodge City	LifePoint Health	99	263
REP. STEVE WATKINS (R)/ KANSAS 2ND				
4 HOSPITALS				
Allen County Regional Hospital	Iola	HCA Healthcare	25	
Kansas Rehabilitation Hospital, a joint venture of Encompass Health	Topeka	Encompass Health	79	178
Saint John Hospital	Leavenworth	Prime Healthcare Services	76	145
The University of Kansas St. Francis Campus	Topeka	Ardent Health Services	24	1,600
REP. SHARICE DAVIDS (D)/ KANSAS 3RD				
4 HOSPITALS				
Menorah Medical Center	Overland Park	HCA Healthcare	164	981
MidAmerica Rehabilitation Hospital	Overland Park	Encompass Health	98	278
Overland Park Regional Medical Center	Overland Park	HCA Healthcare	351	1,306
Providence Medical Center	Kansas City	Prime Healthcare Services	400	724
REP. RON ESTES (R)/ KANSAS 4TH				
6 HOSPITALS				
Wesley Medical Center	Wichita	HCA Healthcare	760	2,570
Wesley Birthcare Center	Witchita	HCA Healthcare		
Wesley Children's Hospital	Witchita	HCA Healthcare		
Wesley West ER & Diagnostic Center	Witchita	HCA Healthcare		
Wesley Rehabilitation Hospital, an Affiliate of Encompass Health	Wichita	Encompass Health	65	225
Wesley Woodlawn Hospital & ER	Wichita	HCA Healthcare	99	

^
BACK
TO TOP