



# IOWA

## FAH MEMBER FACILITIES

### SENATE

Sen. Joni Ernst (R)

Sen. Chuck Grassley (R)

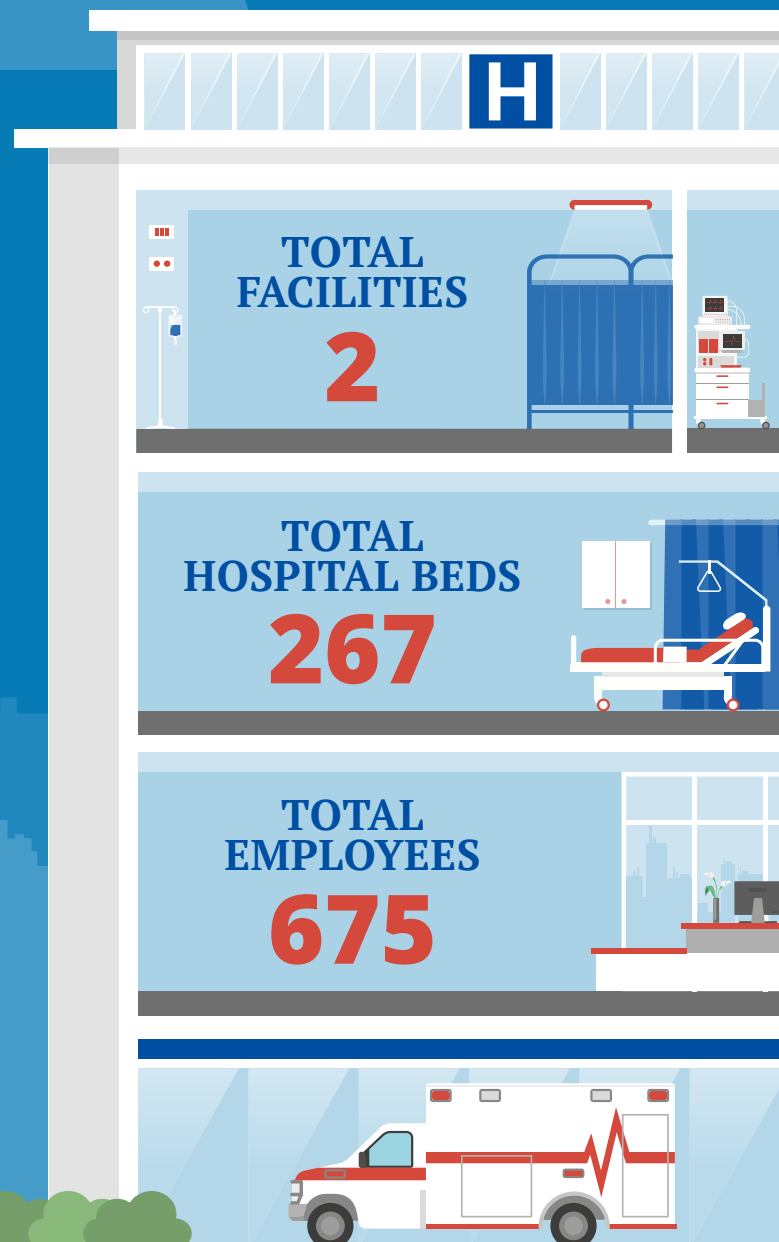
### HOUSE *(Click name to view the district)*

Rep. Dave Loebsack (D)/ Iowa 2nd

Rep. Cindy Axne (D)/ Iowa 3rd



Federation of American Hospitals represents America's investor-owned community hospitals and health systems.





# IOWA FAH MEMBER FACILITIES

			Beds	Employees
<b>REP. DAVE LOESACK (D)/ IOWA 2ND</b>				
<b>1 HOSPITAL</b>				
Ottumwa Regional Health Center	Ottumwa	LifePoint Health	217	675
<b>REP. CINDY AXNE (D)/ IOWA 3RD</b>				
<b>1 HOSPITAL</b>				
Mercy Rehabilitation Hospital	Clive	Kindred Healthcare	50	

^  
BACK  
TO TOP