



INDIANA

FAH MEMBER FACILITIES

SENATE

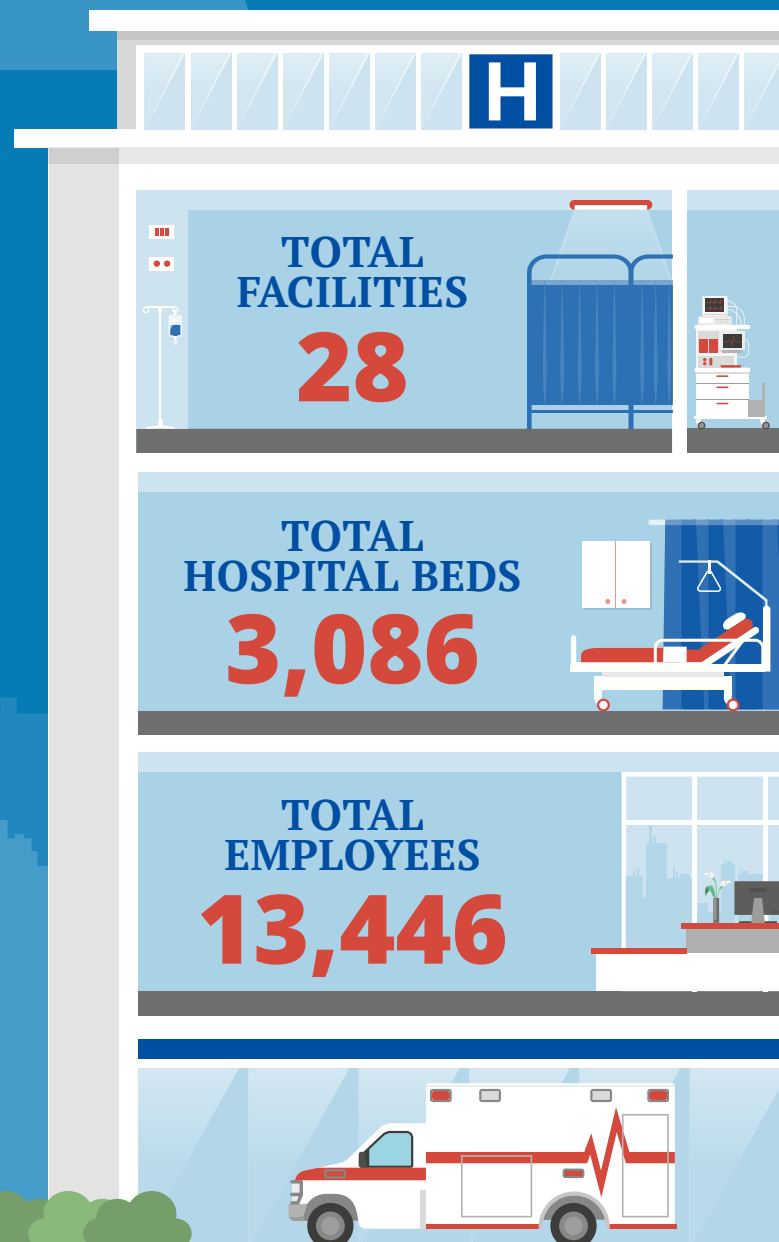
Sen. Mike Braun (R)
Sen. Todd Young (R)

HOUSE *(Click name to view the district)*

Rep. Peter Visclosky (D)/ Indiana 1st
Rep. Jackie Walorski (R)/ Indiana 2nd
Rep. Jim Banks (R)/ Indiana 3rd
Rep. Susan Brooks (R)/ Indiana 5th
Rep. Gregory Pence (R)/ Indiana 6th
Rep. André Carson (D)/ Indiana 7th
Rep. Larry Bucshon (R)/ Indiana 8th
Rep. Trey Hollingsworth (R)/ Indiana 9th



Federation of American Hospitals represents America's investor-owned community hospitals and health systems.





INDIANA FAH MEMBER FACILITIES

			Beds	Employees
REP. PETER VISCLOSKY (D)/ INDIANA 1ST				
4 HOSPITALS				
Kindred Hospital Northwest Indiana	Hammond	Kindred Healthcare	70	169
Midwest Center for Youth and Families and South Shore Academy	Kouts	Universal Health Services, Inc.	74	133
Porter Regional Hospital	Valparaiso	Community Health Systems	301	1,945
Porter Portage Hospital (Campus of Porter Hospital)	Portage	Community Health Systems		
REP. JACKIE WALORSKI (R)/ INDIANA 2ND				
4 HOSPITALS				
Dukes Memorial Hospital	Peru	Community Health Systems	25	234
La Porte Hospital	La Porte	Community Health Systems	227	988
Michiana Behavioral Health	Plymouth	Universal Health Services, Inc.	80	159
Starke Hospital	Knox	Community Health Systems	53	131
REP. JIM BANKS (R)/ INDIANA 3RD				
7 HOSPITALS				
Bluffton Regional Medical Center	Bluffton	Community Health Systems	79	298
Dupont Hospital	Fort Wayne	Community Health Systems	131	686
Kosciusko Community Hospital	Warsaw	Community Health Systems	72	536
Lutheran Hospital	Fort Wayne	Community Health Systems	471	2,743
Lutheran Rehabilitation Hospital	Fort Wayne	Community Health Systems	36	143
St. Joseph Hospital	Fort Wayne	Community Health Systems	191	694
The Orthopedic Hospital	Fort Wayne	Community Health Systems	39	255
REP. SUSAN BROOKS (R)/ INDIANA 5TH				
2 HOSPITALS				
Community Health Network Rehabilitation Hospital	Indianapolis	Kindred Healthcare	60	216
Kindred Hospital Indianapolis North	Indianapolis	Kindred Healthcare	45	129

^
BACK
TO TOP



INDIANA FAH MEMBER FACILITIES

			Beds	Employees
REP. GREGORY PENCE (R)/ INDIANA 6TH				
1 HOSPITAL				
Columbus Behavioral Center for Children and Adolescents	Columbus	Universal Health Services, Inc.	57	103
REP. ANDRÉ CARSON (D)/ INDIANA 7TH				
1 HOSPITAL				
Kindred Hospital Indianapolis	Indianapolis	Kindred Healthcare	59	104
REP. LARRY BUCSHON (R)/ INDIANA 8TH				
2 HOSPITALS				
Encompass Health Deaconess Rehabilitation Hospital	Evansville	Encompass Health	103	347
Terre Haute Regional Hospital	Terre Haute	HCA Healthcare	278	755
REP. TREY HOLLINGSWORTH (R)/ INDIANA 9TH				
7 HOSPITALS				
Bloomington Meadows Hospital	Bloomington	Universal Health Services, Inc.	78	158
Clark Memorial Hospital	Jeffersonville	LifePoint Health	236	1,448
Community Health Network Rehabilitation Hospital South	Greenwood	Kindred Healthcare	44	131
Monroe Hospital	Bloomington	Prime Healthcare Services	32	178
Scott Memorial Hospital	Scottsburg	LifePoint Health	25	242
Valle Vista Health System	Greenwood	Universal Health Services, Inc.	120	264
Wellstone Regional Hospital	Jeffersonville	Universal Health Services, Inc.	100	257

^
BACK
TO TOP