



IDAHO

FAH MEMBER FACILITIES

SENATE

Sen. Mike Crapo (R)

Sen. James E. Risch (R)

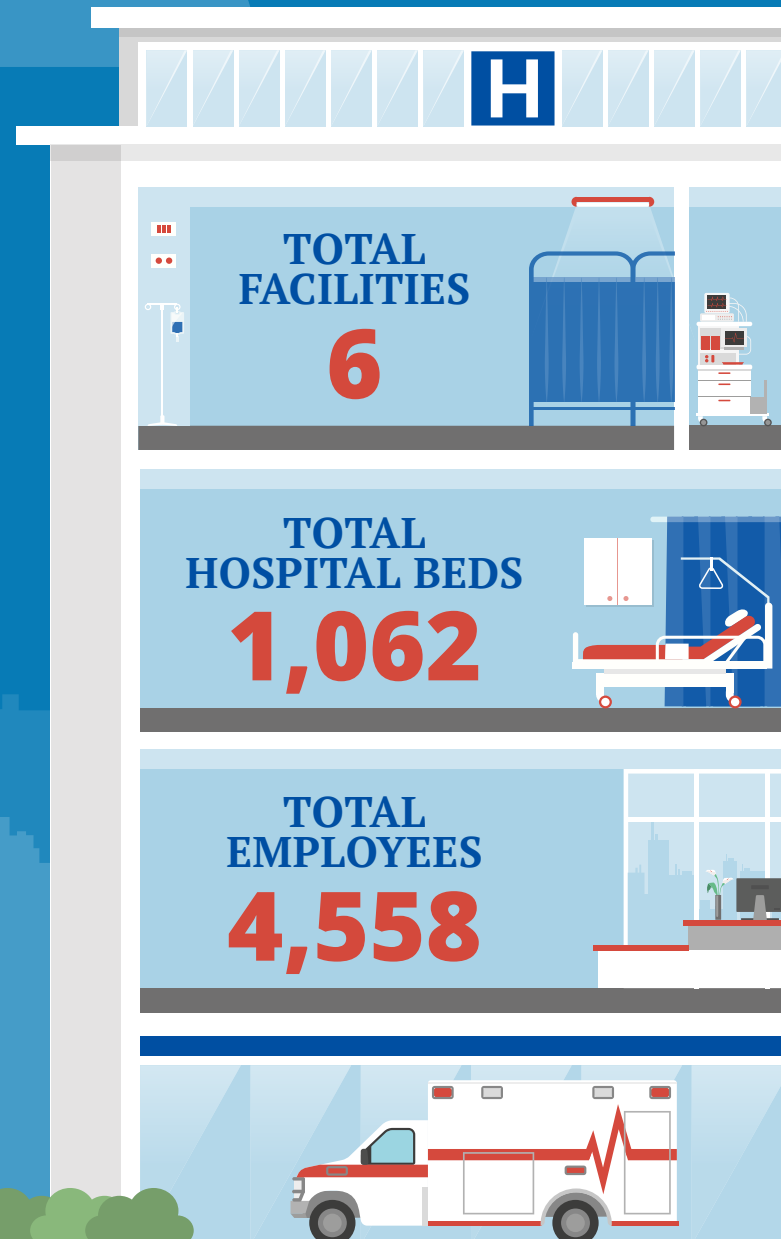
HOUSE *(Click name to view the district)*

Rep. Russell Fulcher (R)/ Idaho 1st

Rep. Mike Simpson (R)/ Idaho 2nd



Federation of American Hospitals represents America's investor-owned community hospitals and health systems.





IDAHO FAH MEMBER FACILITIES

			Beds	Employees
REP. RUSSELL FULCHER (R)/ IDAHO 1ST				
3 HOSPITALS				
Boulder Creek Academy	Bonnors Ferry	Universal Health Services, Inc.	96	79
St. Joseph Regional Medical Center	Lewiston	LifePoint Health	138	1,025
West Valley Medical Center	Caldwell	HCA Healthcare	150	504
REP. MIKE SIMPSON (R)/ IDAHO 2ND				
3 HOSPITALS				
Eastern Idaho Regional Medical Center	Idaho Falls	HCA Healthcare	318	1,383
Intermountain Hospital	Boise	Universal Health Services, Inc.	155	267
Portneuf Medical Center	Pocatello	Arden Health Services	205	1,300

^
BACK
TO TOP