



DELAWARE

FAH MEMBER FACILITIES

SENATE

Sen. Tom Carper (D)

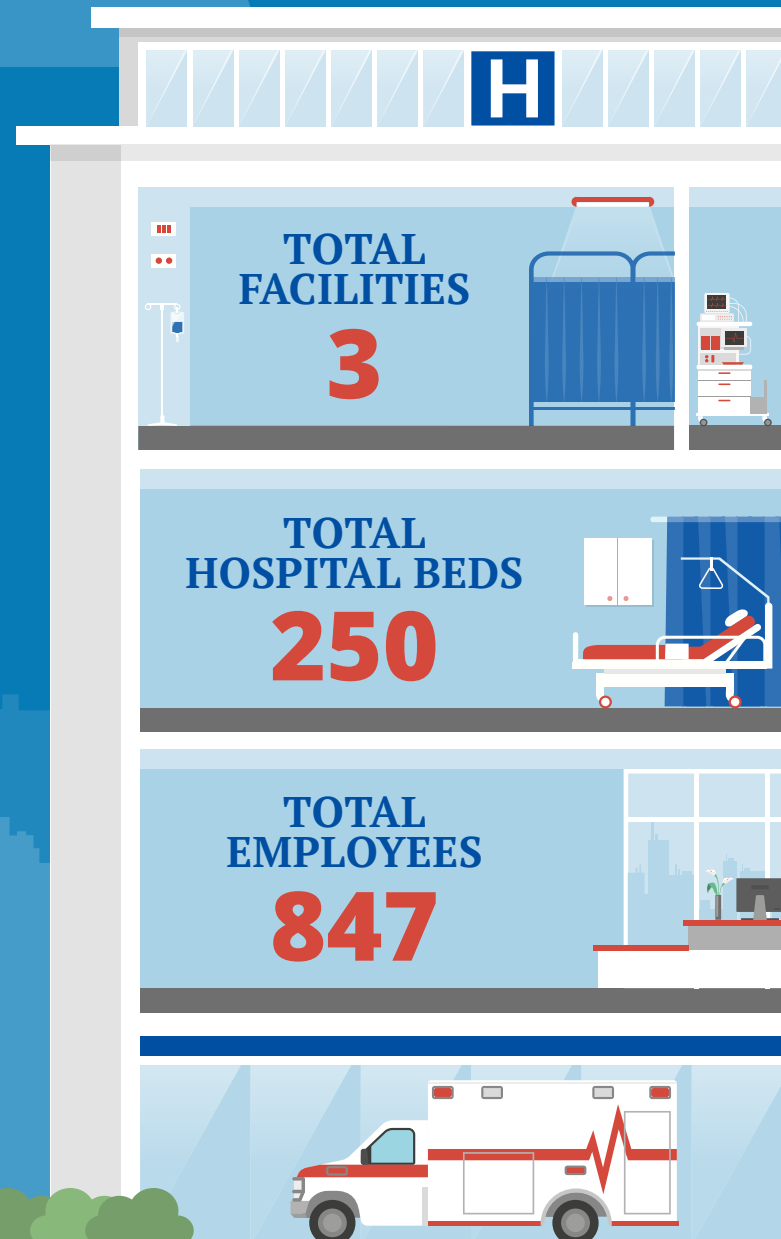
Sen. Christopher Coons (D)

HOUSE *(Click name to view the district)*

Rep. Lisa Blunt Rochester (D)/ Delaware At-Large



Federation of American Hospitals represents America's investor-owned community hospitals and health systems.





DELAWARE FAH MEMBER FACILITIES

			Beds	Employees
REP. LISA BLUNT ROCHESTER (D)/ DELAWARE AT-LARGE				
3 HOSPITALS				
Dover Behavioral Health System	Dover	Universal Health Services, Inc.	88	307
Encompass Health Rehabilitation Hospital of Middletown	Middletown	Encompass Health	34	156
Rockford Center	Newark	Universal Health Services, Inc.	128	384

^
BACK
TO TOP