



ARKANSAS

FAH MEMBER FACILITIES

SENATE

Sen. John Boozman (R)

Sen. Tom Cotton (R)

HOUSE *(Click name to view the district)*

Rep. Rick Crawford (R)/ Arkansas 1st

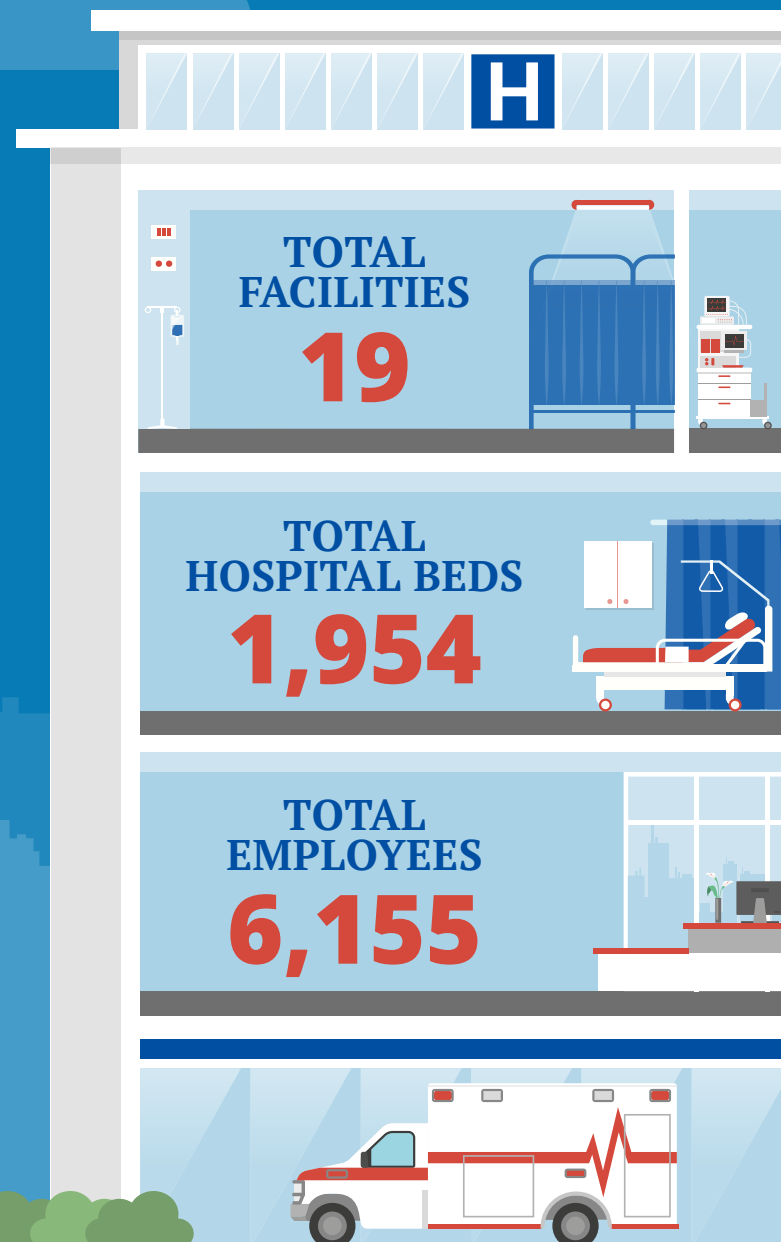
Rep. French Hill (R)/ Arkansas 2nd

Rep. Steve Womack (R)/ Arkansas 3rd

Rep. Bruce Westerman (R)/ Arkansas 4th



Federation of American Hospitals represents America's investor-owned community hospitals and health systems.





ARKANSAS FAH MEMBER FACILITIES

			Beds	Employees
REP. RICK CRAWFORD (R)/ ARKANSAS 1ST				
1 HOSPITAL				
Encompass Health Rehabilitation Hospital of Jonesboro	Jonesboro	Encompass Health	80	232
REP. FRENCH HILL (R)/ ARKANSAS 2ND				
6 HOSPITALS				
Bridgeway	North Little Rock	Universal Health Services, Inc.	127	270
CHI St. Vincent Sherwood Rehabilitation Hospital, a partner of Encompass Health	Sherwood	Encompass Health	80	256
Pinnacle Pointe Hospital	Little Rock	Universal Health Services, Inc.	124	300
Rivendell Behavioral Health Services - Arkansas	Benton	Universal Health Services, Inc.	80	185
Saline Memorial Hospital	Benton	LifePoint Health	177	1,021
The Pointe Behavioral Health Services	Conway	Universal Health Services, Inc.		188
REP. STEVE WOMACK (R)/ ARKANSAS 3RD				
9 HOSPITALS				
Encompass Health Rehabilitation Hospital, a partner of Washington Regional	Fayetteville	Encompass Health	80	239
Encompass Health Rehabilitation Hospital of Fort Smith	Fort Smith	Encompass Health	80	171
Northwest Medical Center - Bentonville	Bentonville	Community Health Systems	128	478
Northwest Medical Center - Springdale	Springdale	Community Health Systems	222	733
Northwest Health Physicians' Specialty Hospital	Fayetteville	Community Health Systems	20	155
Saint Mary's Regional Medical Center	Russellville	LifePoint Health	170	
Siloam Springs Regional Hospital	Siloam Springs	Community Health Systems	73	212
Springwoods Behavioral Health	Fayetteville	Universal Health Services, Inc.	80	156
Willow Creek Women's Hospital	Johnson	Community Health Systems	64	244
REP. BRUCE WESTERMAN (R)/ ARKANSAS 4TH				
3 HOSPITALS				
Chi St. Vincent Hot Springs Rehabilitation Hospital, a partner of Encompass Health	Hot Springs	Encompass Health	40	108
Medical Center of South Arkansas	El Dorado	Community Health Systems	166	485
National Park Medical Center	Hot Springs	LifePoint Health	163	722

[BACK TO TOP](#)