



ALABAMA

FAH MEMBER FACILITIES

SENATE

Sen. Doug Jones (D)

Sen. Richard Shelby (R)

HOUSE *(Click name to view the district)*

Rep. Bradley Byrne (R)/ Alabama 1st

Rep. Martha Roby (R)/ Alabama 2nd

Rep. Mike Rogers (R)/ Alabama 3rd

Rep. Robert Aderholt (R)/ Alabama 4th

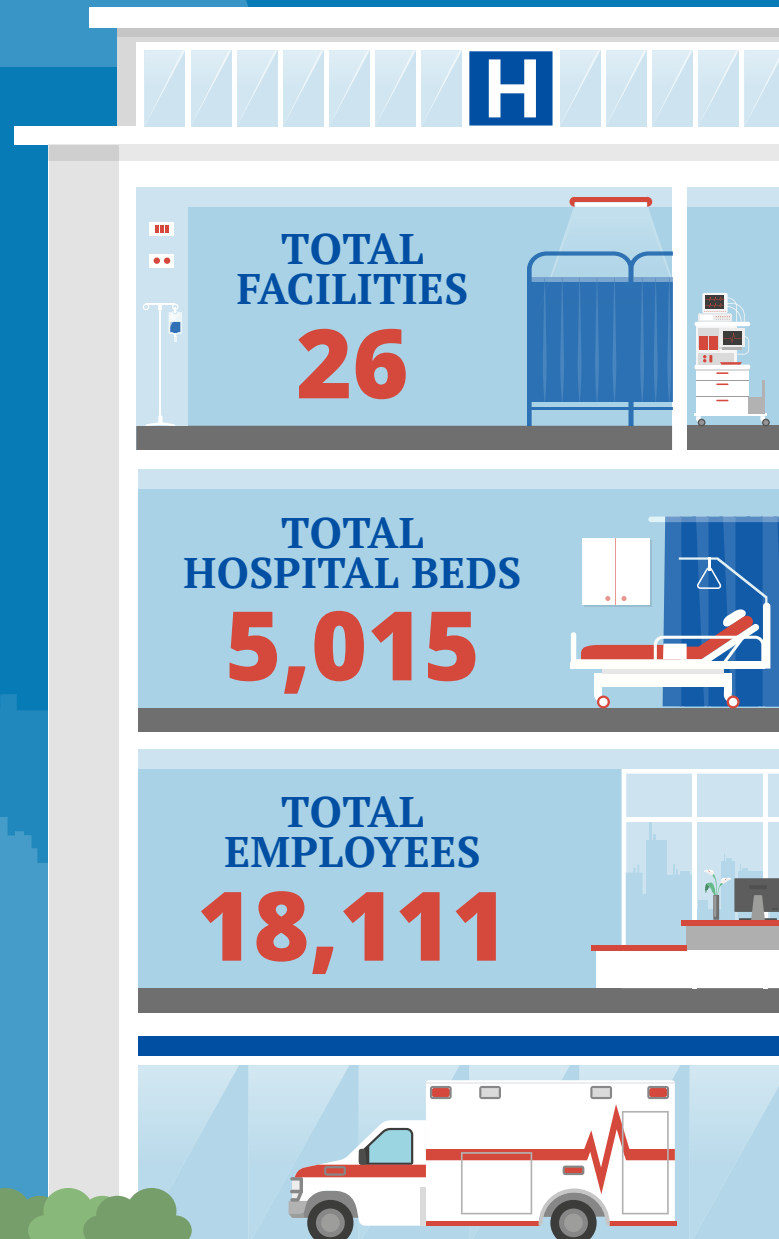
Rep. Mo Brooks (R)/ Alabama 5th

Rep. Gary Palmer (R)/ Alabama 6th

Rep. Terri Sewell (D)/ Alabama 7th



Federation of American Hospitals represents America's investor-owned community hospitals and health systems.





ALABAMA FAH MEMBER FACILITIES

			Beds	Employees
REP. BRADLEY BYRNE (R)/ ALABAMA 1ST				
1 HOSPITAL				
South Baldwin Regional Medical Center	Foley	Community Health Systems	112	739
REP. MARTHA ROBY (R)/ ALABAMA 2ND				
5 HOSPITALS				
Andalusia Regional Hospital	Andalusia	LifePoint Health	88	286
Flowers Hospital	Dothan	Community Health Systems	235	1,269
Encompass Health Rehabilitation Hospital of Dothan	Dothan	Encompass Health	51	204
Laurel Oaks Behavioral Health Center	Dothan	Universal Health Services, Inc.	124	226
Medical Center Enterprise	Enterprise	Community Health Systems	131	405
REP. MIKE ROGERS (R)/ ALABAMA 3RD				
2 HOSPITALS				
Citizens Baptist Medical Center	Talladega	Tenet Healthcare Corporation	122	323
Regional Rehabilitation Hospital	Phenix City	Encompass Health	48	202
REP. ROBERT ADERHOLT (R)/ ALABAMA 4TH				
5 HOSPITALS				
Encompass Health Rehabilitation Hospital of Gadsden	Gadsden	Encompass Health	44	186
Gadsden Regional Medical Center	Gadsden	Community Health Systems	346	1,273
Riverview Regional Medical Center	Gadsden	Prime Healthcare Services	281	549
Shoals Hospital	Muscle Shoals	LifePoint Health	178	387
Walker Baptist Medical Center	Jasper	Tenet Healthcare Corporation	267	664
REP. MO BROOKS (R)/ ALABAMA 5TH				
3 HOSPITALS				
Crestwood Medical Center	Huntsville	Community Health Systems	180	1,183
Encompass Health Rehabilitation Hospital of North Alabama	Huntsville	Encompass Health	70	248
North Alabama Medical Center	Florence	LifePoint Health	358	1,300

^
BACK
TO TOP



ALABAMA FAH MEMBER FACILITIES

			Beds	Employees
REP. GARY PALMER (R)/ ALABAMA 6TH				
6 HOSPITALS				
Alabama Clinical Schools	Birmingham	Universal Health Services, Inc.	80	129
Brookwood Baptist Medical Center	Birmingham	Tenet Healthcare Corporation	607	2,437
Encompass Health Lakeshore Rehabilitation Hospital	Birmingham	Encompass Health	100	429
Encompass Health Rehabilitation Hospital of Shelby County	Pelham	Encompass Health		
Grandview Medical Center	Birmingham	Community Health Systems	372	1,760
Shelby Baptist Medical Center	Alabaster	Tenet Healthcare	252	1123
REP. TERRI SEWELL (D)/ ALABAMA 7TH				
4 HOSPITALS				
Encompass Health Rehabilitation Hospital of Montgomery	Montgomery	Encompass Health	70	271
Hill Crest Behavioral Health Services	Birmingham	Universal Health Services, Inc.	219	402
Princeton Baptist Medical Center	Birmingham	Tenet Healthcare Corporation	505	1596
Vaughan Regional Medical Center	Selma	LifePoint Health	175	520

^
BACK
TO TOP