



CALIFORNIA

FAH MEMBER FACILITIES

SENATE

Sen. Dianne Feinstein (D)

Sen. Kamala D. Harris (D)

HOUSE *(Click name to view the district)*

Rep. Doris Matsui (D)/ California 6th

Rep. Paul Cook (R)/ California 8th

Rep. Jeff Denham (R)/ California 10th

Rep. Nancy Pelosi (D)/ California 12th

Rep. Barbara Lee (D)/ California 13th

Rep. Eric Swalwell (D)/ California 15th

Rep. Ro Khanna (D)/ California 17th

Rep. Anna G. Eshoo (D)/ California 18th

Rep. Zoe Lofgren (D)/ California 19th

Rep. Jimmy Panetta (D)/ California 20th

Rep. Kevin McCarthy (R)/ California 23rd

Rep. Salud Carbajal (D)/ California 24th

Rep. Steve Knight (R)/ California 25th

Rep. Julia Brownley (D)/ California 26th

Rep. Judy Chu (D)/ California 27th

Rep. Brad Sherman (D)/ California 30th

Rep. Pete Aguilar (D)/ California 31st

Rep. Grace Napolitano (D)/ California 32nd

Rep. Ted Lieu (D)/ California 33rd

Rep. Norma Torres (D)/ California 35th

Rep. Raul Ruiz (D)/ California 36th

Rep. Karen Bass (D)/ California 37th

Rep. Linda Sanchez (D)/ California 38th

Rep. Ed Royce (R)/ California 39th

Rep. Mark Takano (D)/ California 41st

Rep. Ken Calvert (R)/ California 42nd

Rep. Maxine Waters (D)/ California 43rd

Rep. Mimi Walters (R)/ California 45th

Rep. Lou Correa (D)/ California 46th

Rep. Alan Lowenthal (D)/ California 47th

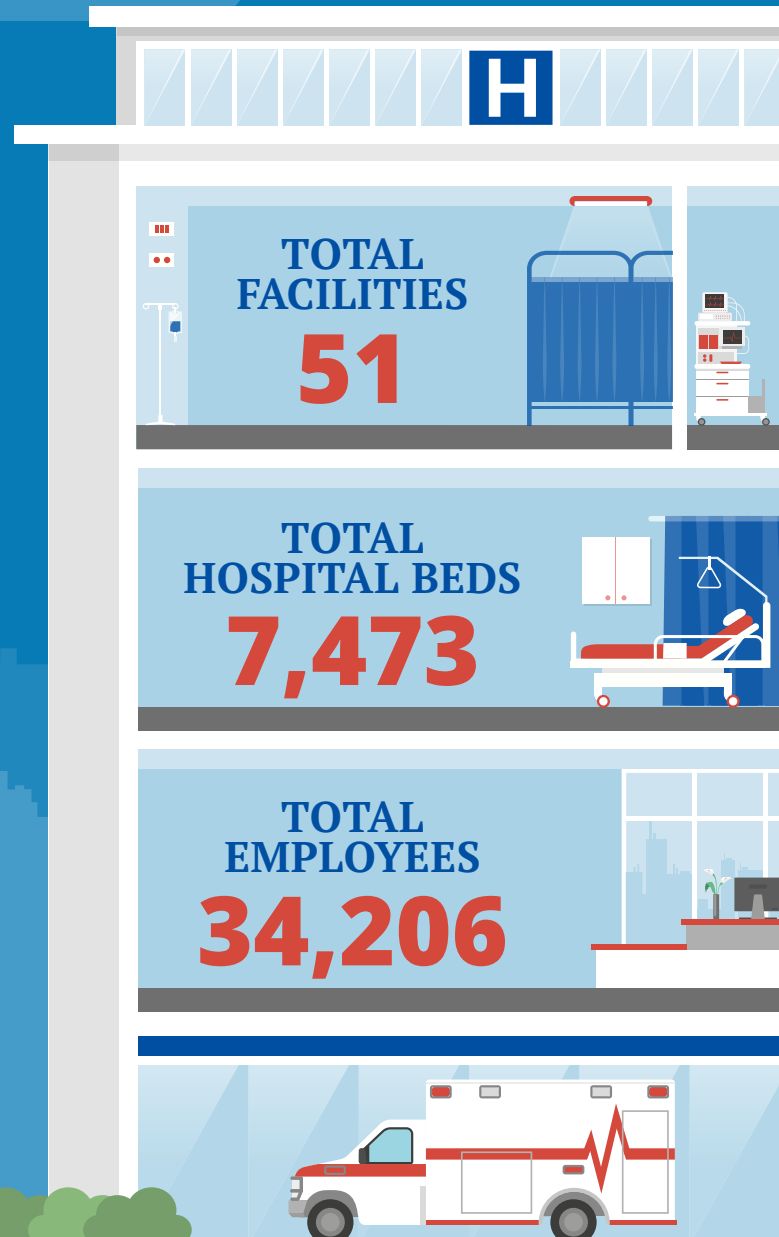
Rep. Dana Rohrabacher (R)/ California 48th

Rep. Duncan Hunter (R)/ California 50th

Rep. Susan Davis (D)/ California 53rd



Federation of American Hospitals represents America's investor-owned community hospitals and health systems.





CALIFORNIA FAH MEMBER FACILITIES

| | | | Beds | Employees |
|--|---------------|---------------------------|------|-----------|
| REP. DORIS MATSUI (D)/ CALIFORNIA 6TH | | | | |
| 2 HOSPITALS | | | | |
| Heritage Oaks Hospital | Sacramento | Universal Health Services | 125 | 320 |
| Sierra Vista Hospital | Sacramento | Universal Health Services | 120 | 343 |
| REP. PAUL COOK (R)/ CALIFORNIA 8TH | | | | |
| 2 HOSPITALS | | | | |
| Barstow Community Hospital | Barstow | Quorum Health | 30 | 339 |
| Hi-Desert Medical Center | Joshua Tree | Tenet Healthcare | 179 | 536 |
| REP. JEFF DENHAM (R)/ CALIFORNIA 10TH | | | | |
| 4 HOSPITALS | | | | |
| Doctors Hospital of Manteca | Manteca | Tenet Healthcare | 73 | 471 |
| Doctors Medical Center of Modesto | Modesto | Tenet Healthcare | 461 | 2606 |
| Emanuel Medical Center | Turlock | Tenet Healthcare | 209 | 1080 |
| HealthSouth Rehabilitation Hospital of Modesto | Modesto | HealthSouth | 50 | 104 |
| REP. NANCY PELOSI (D)/ CALIFORNIA 12TH | | | | |
| 1 HOSPITAL | | | | |
| Foundations San Francisco | San Francisco | Universal Health Services | | 10 |
| REP. BARBARA LEE (D)/ CALIFORNIA 13TH | | | | |
| 1 HOSPITAL | | | | |
| Kindred Hospital San Francisco Bay Area | San Leandro | Kindred | 99 | 316 |
| REP. ERIC SWALWELL (D)/ CALIFORNIA 15TH | | | | |
| 1 HOSPITAL | | | | |
| San Ramon Regional Medical Center | San Ramon | Tenet Healthcare | 123 | 743 |
| REP. RO KHANNA (D)/ CALIFORNIA 17TH | | | | |
| 1 HOSPITAL | | | | |
| Fremont Hospital | Fremont | Universal Health Services | 148 | 394 |

BACK TO TOP



CALIFORNIA FAH MEMBER FACILITIES

| | | | Beds | Employees |
|---|-----------------|---------------------------|------|-----------|
| REP. ANNA G. ESHOO (D)/ CALIFORNIA 18TH | | | | |
| 2 HOSPITALS | | | | |
| Good Samaritan Hospital | San Jose | HCA | 474 | 2047 |
| Mission Oaks Hospital | Los Gatos | HCA | | |
| REP. ZOE LOFGREN (D)/ CALIFORNIA 19TH | | | | |
| 1 HOSPITAL | | | | |
| Regional Medical Center San Jose | San Jose | HCA | 264 | 1782 |
| REP. JIMMY PANETTA (D)/ CALIFORNIA 20TH | | | | |
| 1 HOSPITAL | | | | |
| Watsonville Community Hospital | Watsonville | Quorum Health | 106 | 616 |
| REP. KEVIN MCCARTHY (R)/ CALIFORNIA 23RD | | | | |
| 1 HOSPITAL | | | | |
| HealthSouth Bakersfield Rehabilitation Hospital | Bakersfield | HealthSouth | 86 | 289 |
| REP. SALUD CARBAJAL (D)/ CALIFORNIA 24TH | | | | |
| 2 HOSPITALS | | | | |
| Sierra Vista Regional Medical Center | San Luis Obispo | Tenet Healthcare | 164 | 701 |
| Twin Cities Community Hospital | Templeton | Tenet Healthcare | 122 | 494 |
| REP. STEVE KNIGHT (R)/ CALIFORNIA 25TH | | | | |
| 1 HOSPITAL | | | | |
| Palmdale Regional Medical Ctr | Palmdale | Universal Health Services | 157 | 917 |
| REP. JULIA BROWNLEY (D)/ CALIFORNIA 26TH | | | | |
| 1 HOSPITAL | | | | |
| Los Robles Hospital & Medical Center | Thousand Oaks | HCA | 394 | 1629 |
| REP. JUDY CHU (D)/ CALIFORNIA 27TH | | | | |
| 1 HOSPITAL | | | | |
| Alhambra Hospital | Rosemead | Universal Health Services | 103 | 333 |

BACK TO TOP



CALIFORNIA FAH MEMBER FACILITIES

| | | | Beds | Employees |
|---|------------------|---------------------------|------|-----------|
| REP. BRAD SHERMAN (D)/ CALIFORNIA 30TH | | | | |
| 1 HOSPITAL | | | | |
| West Hills Hospital & Medical Center | West Hills | HCA | 225 | 1068 |
| REP. PETE AGUILAR (D)/ CALIFORNIA 31ST | | | | |
| 1 HOSPITAL | | | | |
| Kindred Hospital Rancho | Rancho Cucamonga | Kindred | 55 | 325 |
| REP. GRACE NAPOLITANO (D)/ CALIFORNIA 32ND | | | | |
| 2 HOSPITALS | | | | |
| Kindred Hospital Baldwin Park | Baldwin Park | Kindred | 95 | 347 |
| Kindred Hospital San Gabriel Valley | West Covina | Kindred | 76 | 260 |
| REP. TED LIEU (D)/ CALIFORNIA 33RD | | | | |
| 1 HOSPITAL | | | | |
| Canyon at Peace Park | Malibu | Universal Health Services | 16 | 43 |
| REP. NORMA TORRES (D)/ CALIFORNIA 35TH | | | | |
| 2 HOSPITALS | | | | |
| Canyon Ridge Hospital | Chino | Universal Health Services | 106 | 292 |
| Kindred Hospital Ontario | Ontario | Kindred | 91 | 333 |
| REP. RAUL RUIZ (D)/ CALIFORNIA 36TH | | | | |
| 3 HOSPITALS | | | | |
| Desert Regional Medical Center | Palm Springs | Tenet Healthcare | 385 | 2238 |
| JFK Memorial Hospital | Indio | Tenet Healthcare | 145 | 619 |
| Michael's House | Palm Springs | Universal Health Services | 120 | |
| REP. KAREN BASS (D)/ CALIFORNIA 37TH | | | | |
| 1 HOSPITAL | | | | |
| Kindred Hospital Los Angeles | Los Angeles | Kindred | 81 | 350 |

^
BACK
TO TOP



CALIFORNIA FAH MEMBER FACILITIES

| | | | Beds | Employees |
|--|-----------|---------------------------|------|-----------|
| REP. LINDA SANCHEZ (D)/ CALIFORNIA 38TH | | | | |
| 2 HOSPITALS | | | | |
| Kindred Hospital La Mirada | La Mirada | Kindred | 118 | 301 |
| Lakewood Regional Medical Center | Lakewood | Tenet Healthcare | 172 | 955 |
| REP. ED ROYCE (R)/ CALIFORNIA 39TH | | | | |
| 2 HOSPITALS | | | | |
| Kindred Hospital Brea | Brea | Kindred | 86 | 194 |
| Placentia-Linda Hospital | Placentia | Tenet Healthcare | 114 | 491 |
| REP. MARK TAKANO (D)/ CALIFORNIA 41ST | | | | |
| 2 HOSPITALS | | | | |
| Kindred Hospital Riverside | Perris | Kindred | 40 | 178 |
| Riverside Community Hospital | Riverside | HCA | 373 | 2104 |
| REP. KEN CALVERT (R)/ CALIFORNIA 42ND | | | | |
| 3 HOSPITALS | | | | |
| Corona Regional Medical Center | Corona | Universal Health Services | 238 | 1128 |
| Inland Valley | Wildomar | Universal Health Services | 122 | 1400 |
| Rancho Springs | Murrieta | Universal Health Services | 120 | |
| REP. MAXINE WATERS (D)/ CALIFORNIA 43RD | | | | |
| 2 HOSPITALS | | | | |
| Del Amo Hospital | Torrance | Universal Health Services | 166 | 370 |
| Kindred Hospital South Bay | Gardena | Kindred | 54 | 230 |
| REP. MIMI WALTERS (R)/ CALIFORNIA 45TH | | | | |
| 1 HOSPITAL | | | | |
| HealthSouth Tustin Rehabilitation Hospital | Tustin | HealthSouth | 48 | 241 |

^
BACK
TO TOP



CALIFORNIA FAH MEMBER FACILITIES

| | | | Beds | Employees |
|--|-----------------|---------------------------|------|-----------|
| REP. LOU CORREA (D)/ CALIFORNIA 46TH | | | | |
| 1 HOSPITAL | | | | |
| Kindred Hospital Santa Ana | Santa Ana | Kindred | 54 | 239 |
| REP. ALAN LOWENTHAL (D)/ CALIFORNIA 47TH | | | | |
| 2 HOSPITALS | | | | |
| Kindred Hospital Westminster | Westminster | Kindred | 109 | 465 |
| Los Alamitos Medical Center | Los Alamitos | Tenet Healthcare | 167 | 1187 |
| REP. DANA ROHRBACHER (R)/ CALIFORNIA 48TH | | | | |
| 1 HOSPITAL | | | | |
| Fountain Valley Regional Hospital | Fountain Valley | Tenet Healthcare | 400 | 1795 |
| REP. DUNCAN HUNTER (R)/ CALIFORNIA 50TH | | | | |
| 1 HOSPITAL | | | | |
| Temecula Valley Hospital | Temecula | Universal Health Services | 140 | 728 |
| REP. SUSAN DAVIS (D)/ CALIFORNIA 53RD | | | | |
| 1 HOSPITAL | | | | |
| Kindred Hospital San Diego | San Diego | Kindred | 70 | 255 |

^
BACK
TO TOP